



Pegasus Court Albany Place, Egham, TW20 9HW

£280,000

Pegasus Court Albany Place, Egham, TW20 9HW

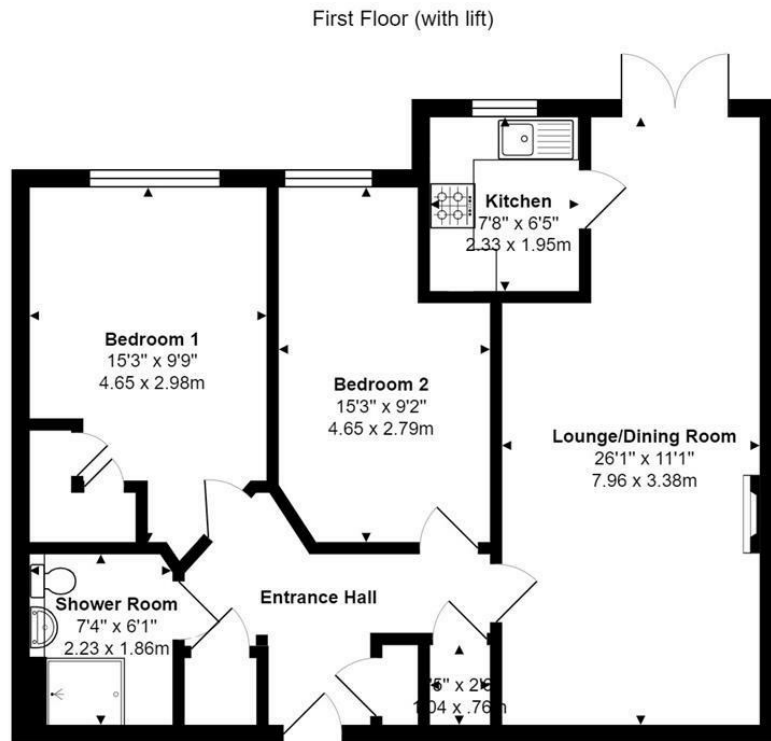
This two double bedroom first floor retirement apartment is situated at the rear of this lovely central Egham development, just a short walk to the main shops and train station and with the advantage of a lift. Other benefits include a guest bedroom suite that can be hired for relatives at a small additional price), a crafts room, laundry room and a well appointed residents' lounge.

The accommodation is well laid out and comprises: entrance hall, large lounge/dining room, kitchen, two double bedrooms with fitted wardrobes and a good size shower room. There is electric heating, double glazing and residents' parking area.

There is no onward chain. EPC Rating: B.



Floor Plan



Total Area: 768 ft² ... 71.4 m²



Features

