



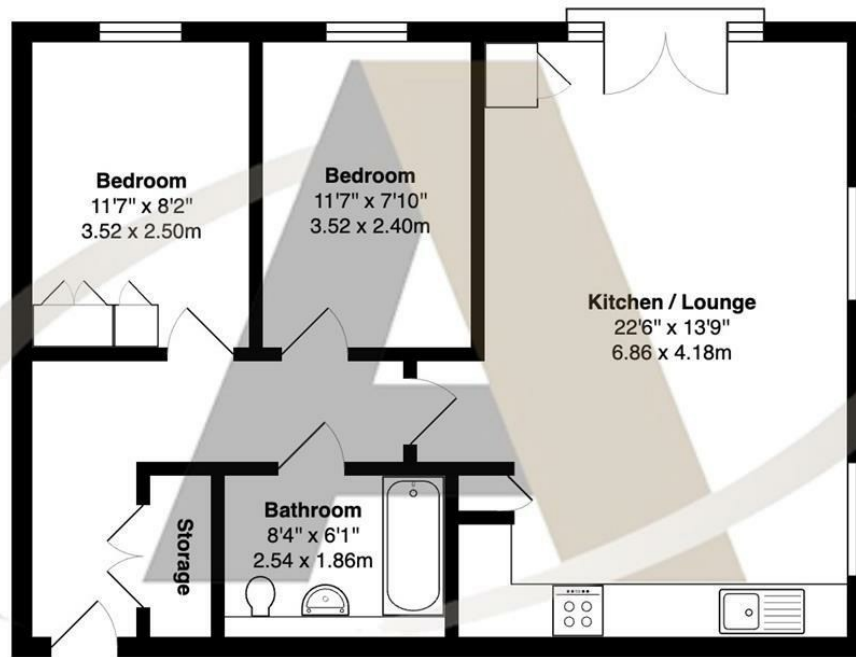
Chambord House Queenswood Crescent, Englefield Green, TW20 0AT

We are delighted to present this modern two-bedroom apartment in Englefield Green's Queenswood Crescent. Built by Cala Homes in 2017 and located opposite Windsor Great Park, this home offers a serene setting and convenient access to local amenities.

The accommodation features two double bedrooms, an open plan lounge/kitchen with integrated appliances, a Juliet balcony overlooking manicured communal gardens, and a modern bathroom with a shower over the bath. Additional features include allocated parking, gas central heating, double glazing, and a long lease, making it a comfortable and practical choice for urban living in a desirable neighborhood.



Floor Plan



First Floor

Queenswood Crescent, Englefield Green

Total Area: 666 ft² ... 61.9 m²

All measurements are approximate and for display purposes only



Features

- Modern two-bedroom apartment built in 2017 by Cala Homes in Queenswood Crescent
- Two double bedrooms
- Juliet balcony overlooking manicured communal gardens
- Allocated parking
- Long lease
- Opposite Windsor Great Park, offering serene surroundings
- Open plan lounge/kitchen with integrated appliances
- Modern bathroom with shower over the bath
- Gas central heating and double glazing

10 St Judes Road, Englefield Green, Surrey TW20 0BY
Tel 01784 433696
sales@aspenestateagents.co.uk



Tenure - Leasehold Council Tax Band - D

