



50 Feltham Hill Road, Ashford, TW15 2DF

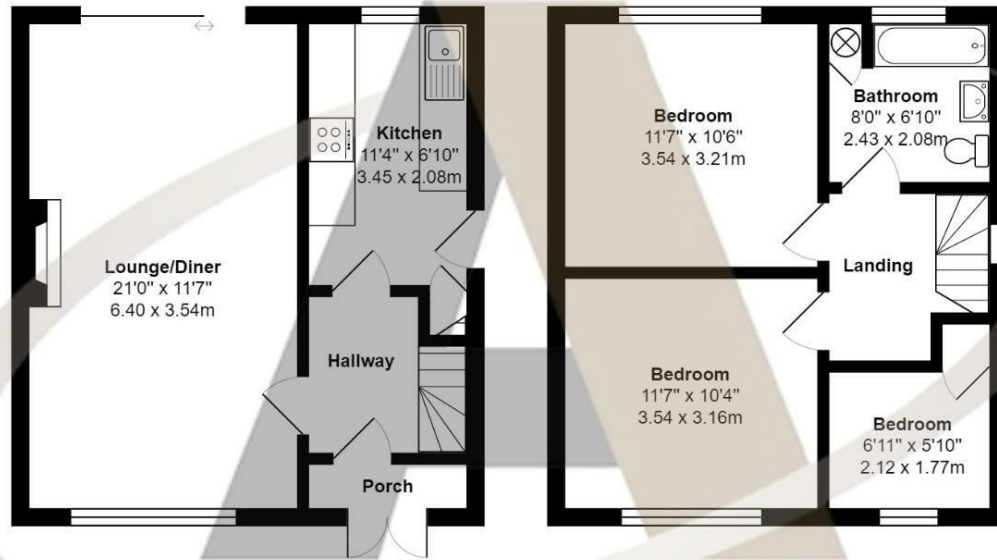
£1,950 Per Month

50 Feltham Hill Road, Ashford, TW15 2DF

A spacious three-bedroom semi-detached house in an ideal location within walking distance to Ashford Town Centre and Mainline Train Station. The ground floor benefits; a large lounge/diner, good size kitchen, and a utility. Upstairs comprises; two double bedrooms, a good size single and a family bathroom. Outside to the rear, there is an easily maintainable garden and to the front, there is a garage and off-street parking. Prompt viewings are encouraged and can be booked by calling Aspen Estate Agents.



Floor Plan



Feltham Hill Road, Ashford

Total Area: 785 ft² ... 72.9 m²

All measurements are approximate and for display purposes only



Features

- Family Bathroom
- UNFURNISHED
- Three Bedrooms
- Driveway
- Recently Redecorated
- AVAILABLE EARLY MAY
- Fitted Kitchen
- Lounge/Diner
- New Flooring Throughout
- Close to Town Centre

