



11 Rhodes Close, Egham, TW20 8AZ

£430,000

11 Rhodes Close, Egham, TW20 8AZ

Welcome to this captivating two-bedroom semi-detached residence nestled at the bottom of the desirable cul-de-sac Rhodes Close, Egham. Boasting a chic interior adorned by the discerning touch of its current owners, this home exudes charm from the moment you step through its inviting glazed entrance porch. The ground floor unfolds into an open-plan kitchen/reception room. The striking kitchen comprises ample worktops and storage cupboards with space for kitchen appliances. This reception area creates an ideal space for both relaxation and entertainment. Adding to the allure, a delightful conservatory extends the living area, providing a serene connection to the picturesque rear garden characterized by its low-maintenance landscaping and a charming garden snug, offering an additional cozy retreat. Upstairs, there are two generously sized double bedrooms, both exceptionally decorated and a fully tiled, modern bathroom. with a white bathroom suite and a shower over the bath.

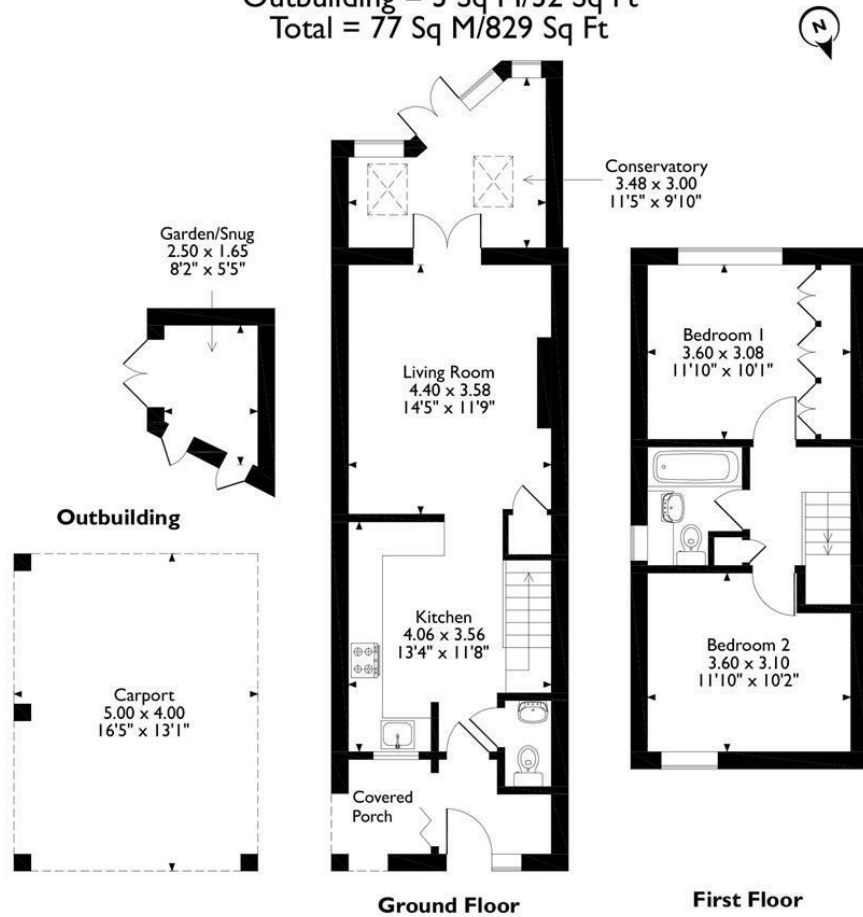
Some other notable features of this wonderful property include; two allocated parking spaces beneath a carport, a pretty front garden, a downstairs WC, gas central heating, and double glazing.

Conveniently located close to Egham town center, railway station, popular schools, and a wealth of local amenities this property should be seen to be fully appreciated. Viewings are encouraged and can be booked by calling Aspen Estate Agents



Floor Plan

11 Rhodes Close, Egham, Surrey
 Approximate Gross Internal Area
 Main House = 74 Sq M/ 797 Sq Ft
 Outbuilding = 3 Sq M/32 Sq Ft
 Total = 77 Sq M/829 Sq Ft



Please note that the location of doors, windows and other items are approximate and this floorplan is to be used for illustrative purposes only. Unauthorized reproduction is prohibited.



Features

- Located in Rhodes Close, a desirable cul-de-sac in Egham
- Chic interior design with inviting glazed entrance porch
- Open-plan kitchen/reception room ideal for relaxation and entertainment
- Charming conservatory extends living area
- Two generously sized double bedrooms
- Modern bathroom
- Two allocated parking spaces under a carport
- Picturesque rear garden with snug

