



16 Liberty House Guildford Street, Chertsey, KT16 9GU

£249,950

16 Liberty House Guildford Street, Chertsey, KT16 9GU

This stunning two-bedroom flat is situated on the first floor of a purpose-built development of apartments and offers a perfect blend of modern living and convenience. Located in the heart of Chertsey, Surrey, this property offers easy access to a range of amenities such as a health club, several supermarkets, shops, restaurants, and pubs, all just a stone's throw away from the doorstep.

Boasting a sleek and stylish design, the apartment features a bright and airy open-plan living area that creates a comfortable and welcoming ambiance. The fully equipped modern kitchen includes space for appliances, ample storage space, and contemporary fittings.

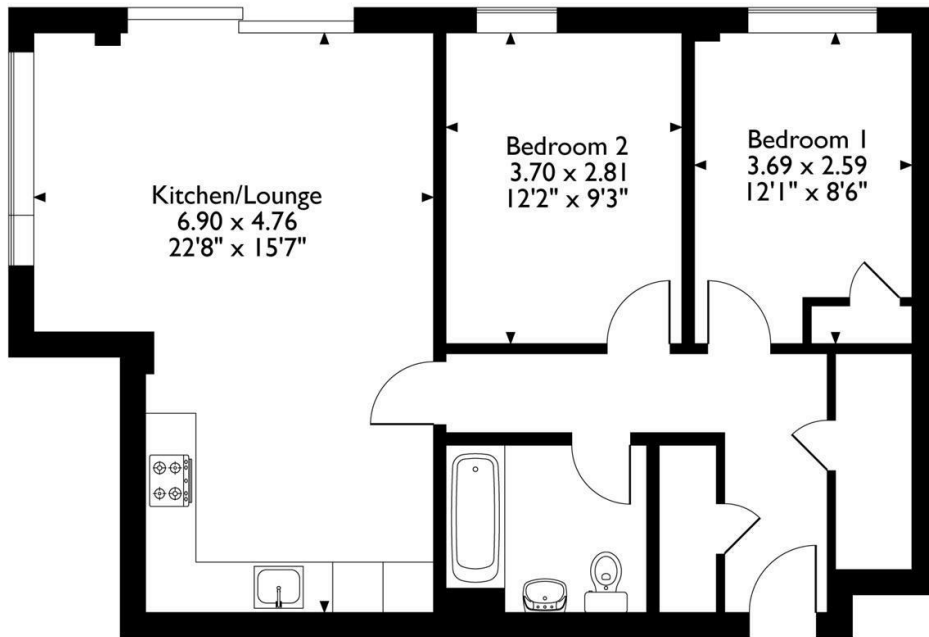
The apartment comprises two double bedrooms that benefit from natural light. The stylish family bathroom is partially tiled and features a modern, white bathroom suite with a shower over the bath. The apartment also benefits from a secure allocated parking space and access to the communal terrace.

The property is conveniently located close to the station, providing regular and easy access to London Waterloo, making it perfect for commuters and first-time buyers alike. This apartment is already attracting a lot of interest, making it a rare opportunity for those seeking a contemporary, convenient, and stylish home. A viewing is highly recommended and can be booked by calling Aspen Estate Agents.



Floor Plan

Liberty House, Flat 16, Flat 16, Guildford Street, Chertsey, Surrey
Approximate Gross Internal Area
67 Sq M/721 Sq Ft



First Floor Flat

Please note that the location of doors, windows and other items are approximate and this floorplan is to be used for illustrative purposes only. Unauthorized reproduction is prohibited.



Features

- 2 Bedroom Apartment
- Close to Station, Shops & Amenities
- Secure Allocated Parking
- Access to Communal Terrace
- Central Chertsey
- Close to Schools
- Long Lease
- 2 Large Storage Cupboards

