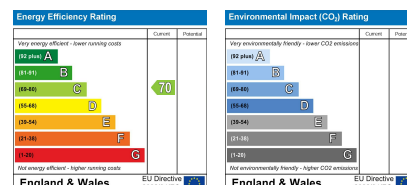


**Approx. Gross Internal Floor Area 1062 sq. ft / 98.68 sq. m**  
Illustration for identification purposes only, measurements are approximate, not to scale.  
Produced by Elements Property

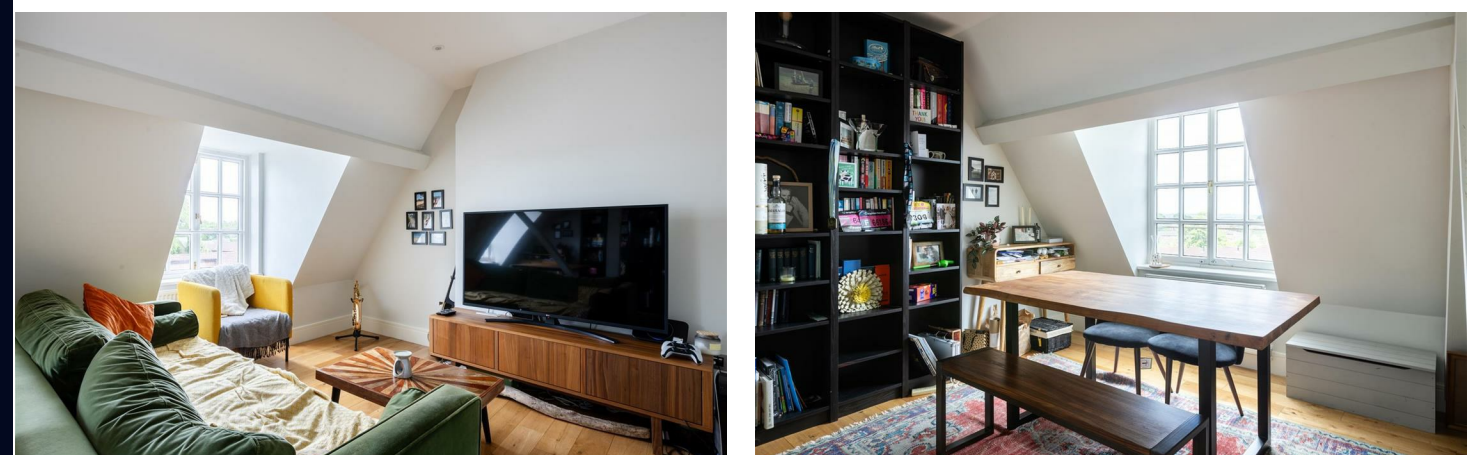


**PSPhomes**

Let's Get Social  
@psphomes /psphomes www.psphomes.co.uk

VIEWING BY APPOINTMENT WITH PSP HOMES  
3 Muster Green South, Haywards Heath, West Sussex, RH16 4AP. TELEPHONE 01444 416999

Much care is taken in the preparation of our particulars, but we cannot guarantee the information given is accurate.  
Property details are issued a general guide only and may not form any part of an offer or contract. We recommend intending purchasers check details personally.



**Flat 15 The Priory, Syresham Gardens, Haywards Heath, West Sussex, RH16 3XB**

**Guide Price £290,000 Leasehold**

**PSPhomes**

@psphomes

/psphomes

www.psphomes.co.uk



Flat 15 The Priory, Syresham Gardens, Haywards Heath, West Sussex, RH16 3XB

Guide Price: £290,000 - £300,000

What we like...

- \* Spacious and incredibly unique duplex apartment of over 1,000 sq ft.
- \* Plenty of character that combines with contemporary high spec.
- \* Iconic conversion and conveniently located for town centre and walk of the station.
- \* Two generous double bedrooms.

Guide Price £290,000 - £300,000

The Apartment...

If you're looking for a spacious and incredibly unique apartment in the heart of Haywards Heath then this utterly fabulous split level duplex in The Priory will surely be of interest.

With over 1,000 sq ft of accommodation over two floors there is plenty of space on offer. The heart of the home is, without doubt, the 20ft living room. This beautifully bright room makes an immediate impression with its high ceilings and striking beams which create a natural separation between the sitting and dining areas. Large arched windows invite generous natural light, whilst the neutral décor highlights the quality of the engineered oak flooring. Bespoke plantation shutters offer a refined finishing touch, while the clean lines and expansive layout provide a flexible canvas to suit a range of interior styles and uses. Ideal as a main living and dining area, this space feels both inviting and airy—perfect for modern apartment living.

The kitchen is sleek and stylish with quality granite counters and modern handle-less units. There is a range of integrated appliances including oven, induction hob, dishwasher and washer dryer. There is also space for a breakfast table.

Stairs rise to the upper floor where you'll find two generous double bedrooms and the contemporary bathroom with stylish tiling and overhead power shower.

This apartment really would make the perfect first time purchase, buy-to-let investment or secure UK bolt hole for someone who spends a lot of time overseas.



Further attributes include electric heating, double glazed windows and video entry phone system.

Out & About

The Priory offers a superb central location with the town centre being within striking distance, whilst you'll find plenty of restaurants and bars along The Broadway - the town's buzzing social centre with a range of large chains & local independents including Pizza Express, Lockhart Tavern Gastropub and WOLFOX coffee roasters - great for a brunch! For commuters, Haywards Heath's mainline station is within a mile of the apartment and provides fast, regular services to London Bridge and Victoria in under an hour, Brighton within 20 minutes and Gatwick Airport within 15 mins - pure commuting convenience. Quintessential villages surround the town and include Lindfield, Cuckfield, Ardingly and Wivelsfield Green. By car, surrounding areas and the M25 motorway network can be accessed via the A23(M) to the west, or A272 to the east.

The Specifics...

Tenure: Leasehold  
Lease: 125 years from 1 January 2019  
Service Charge: £2000 p.a. approx  
Ground Rent: £282 p.a.  
Local Authority: Mid Sussex District Council  
Council Tax Band: B

We believe the above information to be correct but recommend intending buyers check personally before proceeding.

