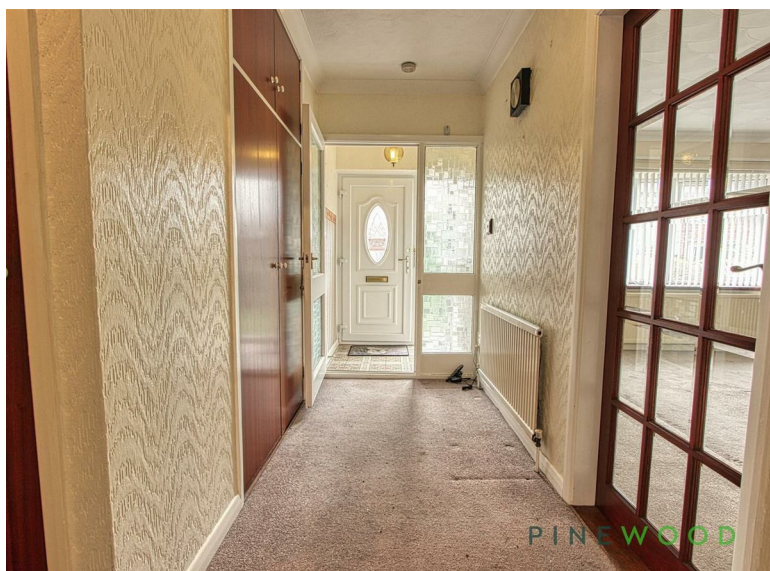


# PINEWOOD



Gray Street, Clowne, Chesterfield, Derbyshire S43 4RT

 3  1  2  EPC D

Offers In The Region Of £289,000





**MUCH MORE THAN FIRST MEETS THEY EYE...** Offered with no upward chain, this spacious three bedroom detached bungalow that has a flexible layout and a double integral garage.

As you arrive you will see dual aspect for entry, there is a driveway and an integral garage with a gated entrance to the rear, this is from the Neale Street access, there is also access from Gray Street to the front door.

As you enter the space here becomes apparent, there is an entrance porch that leads to an entrance hall with storage, this leads through to a spacious lounge with a lovely bow window, there is an archway that leads to the dining room which has a serving hatch through to the kitchen and sliding patio doors that lead through to the garden.

The kitchen has a selection of base and wall units with fitted worksurface, a window overlooking the rear garden and a door for access, having space for a small table.

There are three bedrooms, one has an en-suite WC.

Go through the kitchen to the rear garden where you will see some raised deck and a summer house, there is access to the double garage from here.

**\*\*Please check out our walk through to get a real feel for the place.\*\***

**\*\*Could this be your next move?\***

- DETACHED BUNGALOW
- FLEXIBLE LAYOUT
- SHOWER ROOM
- UPVC
- TENURE - FREEHOLD

- THREE BEDROOMS
- TWO RECEPTION ROOMS
- MASTER BEDROOM WITH EN-SUITE WC
- OFF STREET PARKING AND DOUBLE GARAGE
- COUNCIL TAX BAND - D

### Entrance Porch

With a uPVC door and an opaque glass window flanking, the entrance has a tiled floor and leads through to the entrance hall.

### Entrance Hall

With central heating radiator, fitted carpet and some integrated storage.

### Lounge

A spacious lounge with uPVC bow window to the front aspect, a central heating radiator, fitted carpet and a lovely stone archway leading to the dining room.

### Dining Room

Has sliding patio doors to the rear garden and a useful serving hatch to the kitchen, with a fitted carpet and central heating radiator.

### Kitchen

With a selection of base and wall units, fully tiled including the floor, stainless steel sink and drainer, central heating radiator and a uPVC door to the back garden.

### Shower Room

Having a shower cubicle with electric shower, low flush WC, a pedestal wash basin with tiled splashback, uPVC window window and a central heating radiator.

### Bedroom One

Having a uPVC window, central heating radiator, fitted carpet, vanity style sink unit and access to the Ensuite.

### Bedroom Two

With wall mounted light fittings, a ceiling light fitting, uPVC window, central heating radiator and a fitted carpet.

### Bedroom Three

With a uPVC window, central heating, radiator and a fitted carpet.

### En-suite

Having a wash basin and low flush WC.

### Double Garage

With up and over door, a uPVC door to the back garden, central heating radiator and a sink with unit.

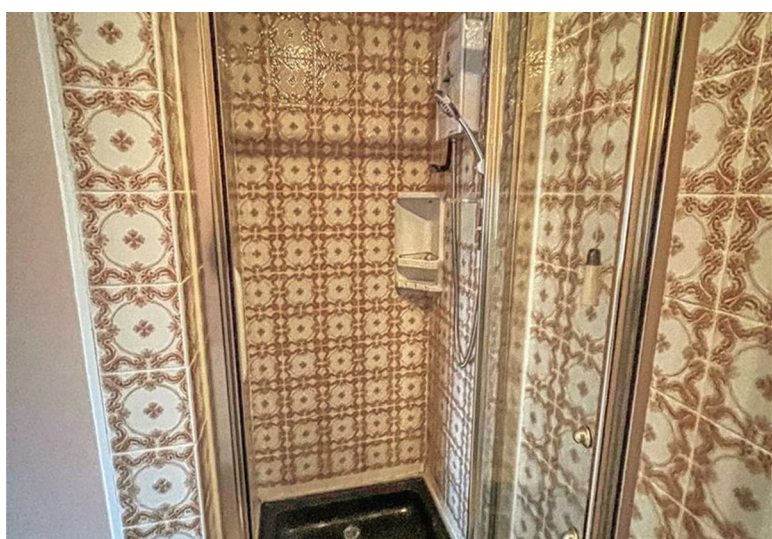
### Garden

Gardens to the front and rear with lawn areas and gated access to the rear garden with raised deck, summer house and lawn area.

### Disclaimer

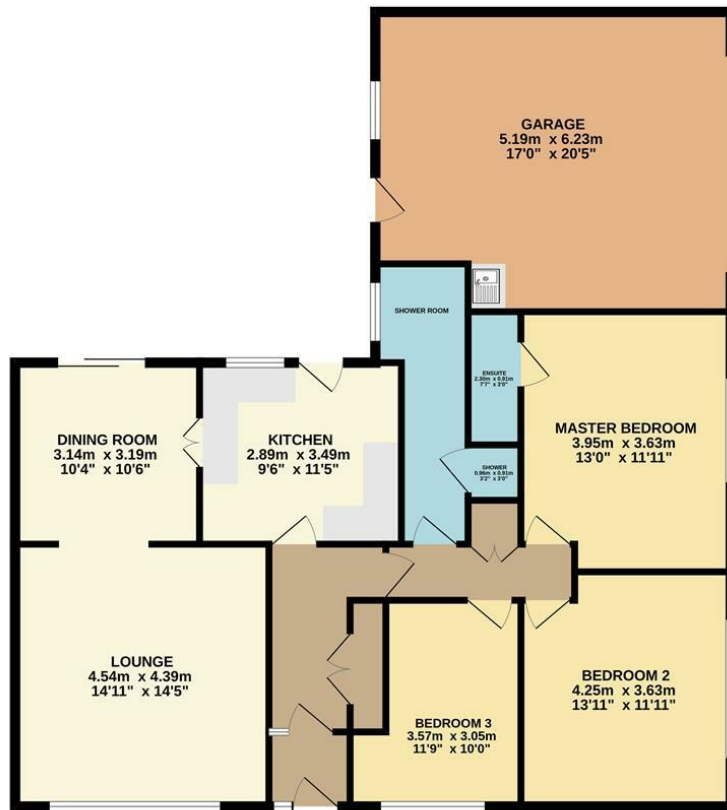
These particulars do not constitute part or all of an offer or contract. While we endeavour to make our particulars fair, accurate and reliable, they are only a general guide to the property and, accordingly. If there are any points which are of particular importance to you, please check with the office and we will be pleased to check the position.



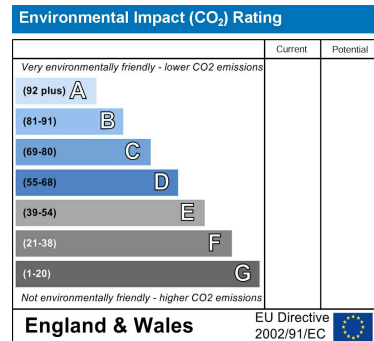
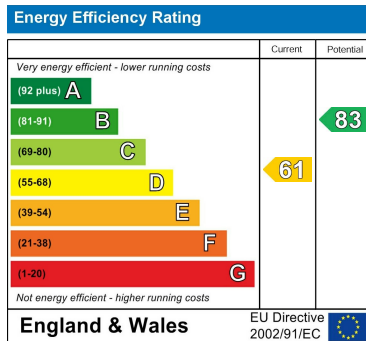




GROUND FLOOR



Whilst every attempt has been made to ensure the accuracy of the floorplan contained here, measurements of doors, windows, rooms and any other items are approximate and no responsibility is taken for any error, omission or mis-statement. This plan is for illustrative purposes only and should be used as such by any prospective purchaser. The services, systems and appliances shown have not been tested and no guarantee as to their operability or efficiency can be given.  
Made with Metropix ©2024



DISCLAIMER

GENERAL - Whilst Pinewood Property Estates endeavour to make our sales particulars accurate they do not constitute or form part of an offer or any contract and none are to be relied upon as statements of representation or fact. Please be advised that some of the particulars may be awaiting vendor approval. If you require clarification or further information on any points, please contact Pinewood Properties, especially if you are travelling some distance to view.

SERVICES, SYSTEMS AND APPLIANCES listed in this advertisement have not been tested by Pinewood Property Estates and no guarantee as to their operating ability or efficiency is given. We strongly advise prospective buyers to commission their own survey or service reports before finalising their offer to purchase.

MEASUREMENTS have been taken as a guide to prospective buyers only, and are not precise. You must verify the dimensions carefully before ordering carpets or any built-in furniture.

FIXTURES AND FITTINGS may be mentioned in the advertisement but all these may not be included in the sale and are to be agreed with the seller.

MONEY LAUNDERING REGULATIONS - Intending purchasers will be asked to produce identification documentation at a later stage and we would ask for your co-operation in order that there will be no delay in agreeing the sale.

You may download, store and use the material for your own personal use and research. You may not republish, retransmit, redistribute or otherwise make the material available to any party or make the same available on any other website

Mansfield branch  
24 Albert Street  
Mansfield, NG1  
01623 621001

Clowne branch  
26 Mill Street,  
Clowne, S43 4JN  
01246 810519

Clay Cross branch  
20 Market Street,  
Clay Cross, S45 9JE  
01246 251194

Chesterfield branch  
33 Holywell Street,  
Chesterfield, S41 7SA  
01246 221039

PINEWOOD

