



Clowne Road, Stanfree, Chesterfield, Derbyshire S44 6AR

 3

 1

 2

 D

£625 PCM

PINEWOOD



**Clowne Road
Stanfree
Chesterfield
Derbyshire
S44 6AR**



£625 PCM

**3 bedrooms
1 bathroom
2 receptions**

- Two Reception Rooms
- Rear Courtyard and Garden
- Two DOUBLE Bedrooms
- Attic DOUBLE Room
- Downstairs Bathroom with White Suite and Shower over Bath
 - Gas Central Heating and uPVC Double Glazing
 - Open Countryside Views
- Great for access to M1 Jct 29a
 - Council Tax Band 'A'
 - Bond £721



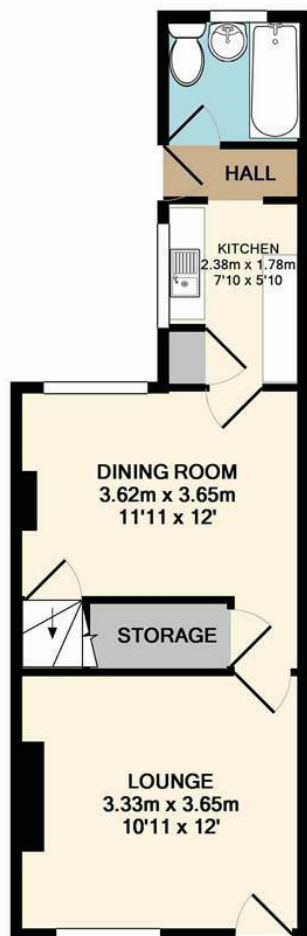


****COUNTRYSIDE VIEWS**EASY ACCESS TO M1**TWO RECEPTION ROOMS****

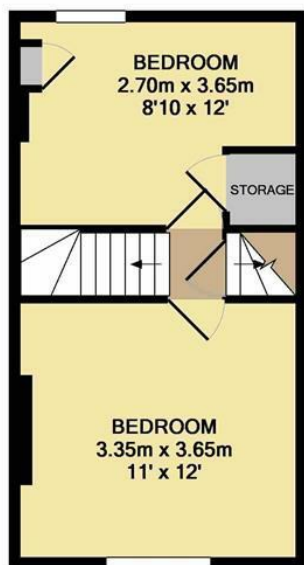
This is a TWO bed plus ATTIC DOUBLE ROOM situated in the semi rural village of Stanfree. Great for access to the M1. To the rear there is an easily maintained south east facing enclosed courtyard and garden. On entering there is a lounge with views over the countryside, dining room and galley kitchen with modern units and space for a washer and oven. The bathroom is also downstairs and has a white three piece suite with bath and shower over.

To the first floor there are two double bedrooms, one with a storage cupboard and a doorway leading to a spacious double attic room. The property benefits from uPVC Double Glazing and Gas Central Heating.

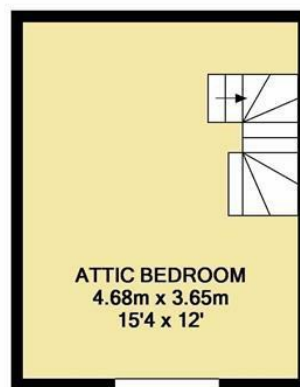
****If you would like to view this property, or apply for it, please click the 'Request Details' button on Rightmove and enter your information****



GROUND FLOOR
APPROX. FLOOR
AREA 33.1 SQ.M.
(356 SQ.FT.)



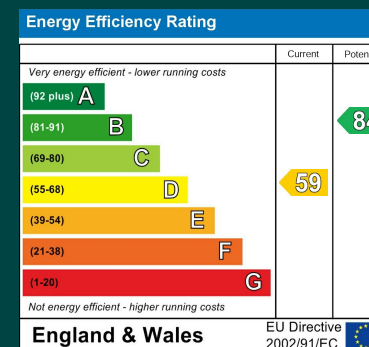
1ST FLOOR
APPROX. FLOOR
AREA 24.9 SQ.M.
(268 SQ.FT.)



2ND FLOOR
APPROX. FLOOR
AREA 17.1 SQ.M.
(184 SQ.FT.)

TOTAL APPROX. FLOOR AREA 75.1 SQ.M. (808 SQ.FT.)

Whilst every attempt has been made to ensure the accuracy of the floor plan contained here, measurements of doors, windows, rooms and any other items are approximate and no responsibility is taken for any error, omission, or mis-statement. This plan is for illustrative purposes only and should be used as such by any prospective purchaser. The services, systems and appliances shown have not been tested and no guarantee as to their operability or efficiency can be given
Made with Metropix ©2019



Mansfield branch
24 Albert Street
Mansfield, NG1
01623 621001

Clowne branch
26 Mill Street,
Clowne, S43 4JN
01246 810519

Clay Cross branch
20 Market Street,
Clay Cross, S45 9JE
01246 251194

Chesterfield branch
33 Holywell Street,
Chesterfield, S41 7SA
01246 221039

PINEWOOD

