



Chapel Close, Clowne, Chesterfield, Derbyshire S43 4PB

 2

 1

 1

 D

£650 Per Calendar Month

PINEWOOD



**Chapel Close
Clowne
Chesterfield
Derbyshire
S43 4PB**

£650 Per Calendar

■ **2 bedrooms**
■ **1 bathrooms**
■ **1 receptions**

- First Floor Apartment
 - Two Bedrooms
 - Electric Heating
- UPVC Double Glazed
 - Parking Space
 - Fitted Kitchen
- Bath And Shower
- Council Tax Band A
- Close to Jnc 30 M1
- Holding Deposit £150



Welcome to this charming flat located in the peaceful area of Chapel Close, Clowne, Chesterfield. This delightful property offers a comfortable living space, perfect for individuals or small families seeking a cosy home.

With a total area of 476 square feet, the flat features a well-appointed reception room that provides a warm and inviting atmosphere for relaxation or entertaining guests. The two bedrooms are thoughtfully designed, offering ample space for rest and personal belongings. The bathroom is conveniently located, ensuring ease of access for all residents.

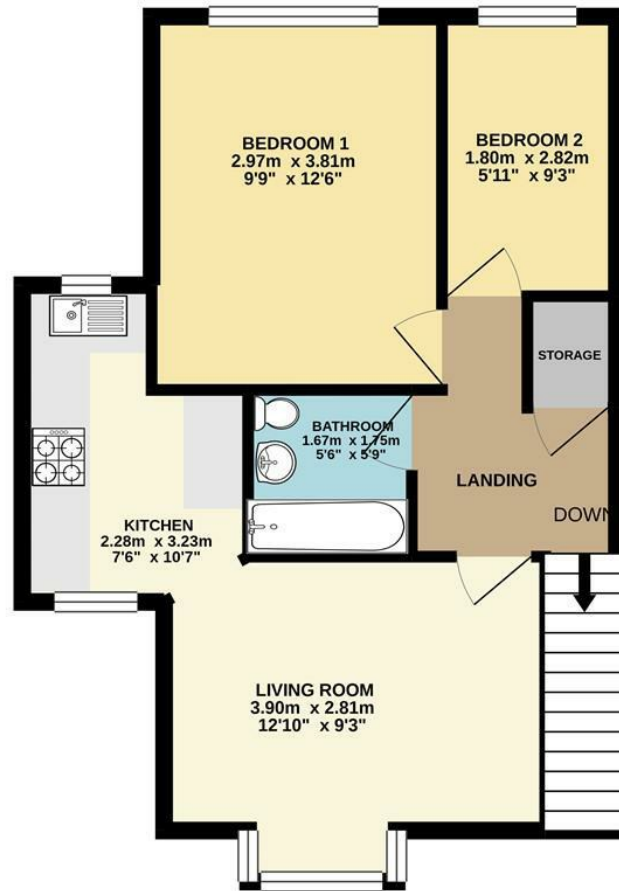
One of the notable advantages of this property is the dedicated parking space for one vehicle, providing added convenience in this tranquil neighbourhood.

Chapel Close is situated in a friendly community, with local amenities and transport links nearby, making it an ideal location for those who appreciate both comfort and accessibility. This flat presents a wonderful opportunity for anyone looking to settle in a serene environment while still being close to the conveniences of modern living.

Do not miss the chance to make this lovely flat your new home.

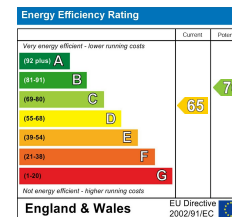
****If you would like to view this property, or apply for it, please click the 'Request Details' button on Rightmove and enter your information****

GROUND FLOOR
44.3 sq.m. (476 sq.ft.) approx.



TOTAL FLOOR AREA: 44.3 sq.m. (476 sq.ft.) approx.

Whilst every attempt has been made to ensure the accuracy of the floorplan contained here, measurements of doors, windows, rooms and any other items are approximate and no responsibility is taken for any error, omission or mis-statement. This plan is for illustrative purposes only and should be used as such by any prospective purchaser. The services, systems and appliances shown have not been tested and no guarantee as to their operability or efficiency can be given.
Made with Metrepro ©2021



Mansfield branch
24 Albert Street
Mansfield, NG1
01623 621001

Clowne branch
26 Mill Street,
Clowne, S43 4JN
01246 810519

Clay Cross branch
20 Market Street,
Clay Cross, S45 9JE
01246 251194

Chesterfield branch
33 Holywell Street,
Chesterfield, S41 7SA
01246 221039

PINEWOOD

