



Old Green Close, Whitwell, Worksop, S80 4GN

4 3 1 EPC C

£1,100 Per Calendar Month

PINEWOOD





# Old Green Close Whitwell Worksop S80 4GN



**£1,100 Per Calendar  
Month**

**4 bedrooms  
3 bathrooms  
1 reception**

- 4 spacious bedrooms
- 3 modern bathrooms
- Cosy reception room
  - End terrace house
  - Located in Whitwell
- Close to local amenities
- Easy access to transport
  - Bond: £1269
  - Ideal family home
- Viewing recommended







Nestled in the charming area of Old Green Close, Whitwell, Worksop, this delightful end-terrace house offers a perfect blend of comfort and modern living. Spanning an impressive 1,175 square feet, the property boasts four spacious bedrooms, making it an ideal home for families or those seeking extra space.

Upon entering, you are welcomed into a well-appointed reception room that provides a warm and inviting atmosphere, perfect for both relaxation and entertaining guests. The layout of the house is thoughtfully designed, ensuring that each room flows seamlessly into the next, enhancing the overall sense of space and light.

The property features three bathrooms, which is a significant advantage for busy households, allowing for convenience and privacy. Each bathroom is fitted with modern fixtures, ensuring a comfortable experience for all residents.

One of the standout features of this home is the ample parking available for multiple vehicles, a rare find in many properties. This feature not only adds to the convenience of daily life but also makes hosting friends and family a breeze.

Old Green Close is a peaceful and friendly neighbourhood, offering a sense of community while still being within easy reach of local amenities and transport links. This property presents an excellent opportunity for those looking to settle in a welcoming area with plenty of space to grow.

In summary, this end-terrace house in Whitwell is a fantastic choice for anyone seeking a spacious and well-equipped family home. With its generous bedrooms, multiple bathrooms, and convenient parking, it is sure to meet the needs of modern living. Do not miss the chance to make this lovely property your own.

**\*\*If you would like to view this property, or apply for it, please click the 'Request Details' button on Rightmove and enter your information\*\***

#### DISCLAIMER

These particulars do not constitute part or all of a contract. While we endeavour to make our particulars fair, accurate and reliable, they are only a general guide to the property the photos are for reference purpose only, the white goods advertised may not be in situ and and if there are any points which are of particular importance to you or any particular white goods required please check with the office and we will be pleased to check the position on these.

#### GENERAL INFORMATION

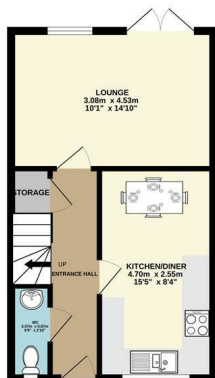
Boiler just been serviced  
Council tax band  
A (£1,631 p/yr)



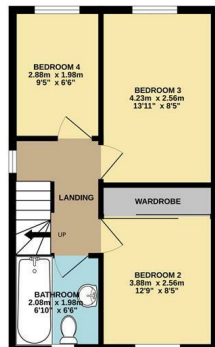
GARAGE  
16.3 sq.m. (175 sq.ft.) approx.



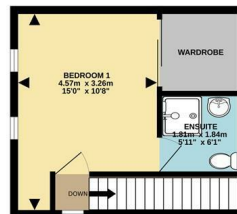
GROUND FLOOR  
35.2 sq.m. (379 sq.ft.) approx.



1ST FLOOR  
34.3 sq.m. (369 sq.ft.) approx.

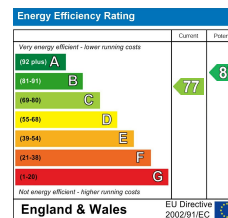


2ND FLOOR  
23.5 sq.m. (253 sq.ft.) approx.



TOTAL FLOOR AREA : 109.1 sq.m. (1175 sq.ft.) approx.

Whilst every attempt has been made to ensure the accuracy of the floorplan contained here, measurements of doors, windows, rooms and any other items are approximate and no responsibility is taken for any error, omission or mis-statement. This plan is for illustrative purposes only and should be used as such by any prospective purchaser. The services, systems and appliances shown have not been tested and no guarantee as to their operability or efficiency can be given.  
Made with Metropix ©2025



Mansfield branch  
24 Albert Street  
Mansfield, NG1  
01623 621001

Clowne branch  
26 Mill Street,  
Clowne, S43 4JN  
01246 810519

Clay Cross branch  
20 Market Street,  
Clay Cross, S45 9JE  
01246 251194

Chesterfield branch  
33 Holywell Street,  
Chesterfield, S41 7SA  
01246 221039

PINEWOOD

