

PINEWOOD



Model View, Creswell, Worksop, Notts S80 4EP

 2  1  1  B

£159,995



NOT TO BE MISSED... Welcome to this beautifully presented TWO bedroom semi detached house located in the sought-after area of Creswell, Worksop.

Whether you're looking for a starter home or a downsizing opportunity, this house has the potential to become your dream abode. It is situated in a popular residential location, close to local amenities and transport links.

The ground floor accommodation offers an entrance hallway and useful cloakroom with W.C There is a generous lounge with dual aspect windows making for a light and comfortable space to relax and a practical kitchen with access to the rear garden. The modern kitchen provides an integrated oven, gas hob and extractor with space for a large fridge freezer and plumbing for a washing machine.

To the first floor are two good size double bedrooms and a family bathroom. The modern family bathroom with a white suite comprises of a shower over bath, low flush W.C and sink set into a vanity unit.

Outside the property benefits from a delightful fully enclosed garden. There is a gate leading out to the adjacent driveway, which is suitable for 2-3 vehicles. There is the added bonus of a single garage with power and lighting.

Don't miss out on the chance to make this lovely property your own in this desirable neighbourhood. To arrange a viewing please call **PINEWOOD PROPERTIES**.

- TWO BEDROOM SEMI DETACHED
- FULLY ENCLOSED GARDEN
- MODERN KITCHEN & BATHROOM
- uPVC DOUBLE GLAZING
- FREEHOLD
- DRIVEWAY & DETACHED SINGLE GARAGE
- FAMILY BATHROOM & DOWNSTAIRS W.C
- IDEAL FOR FIRST TIME BUYERS
- GAS CENTRAL HEATING
- COUNCIL TAX BAND-B

ENTRANCE HALLWAY

Entering through the front door into an entrance hallway with access to W.C

DOWNSTAIRS W.C

5'1" x 3'5" (1.55 x 1.06)

Located off the entrance hallway with low flush W.C and sink with chrome mixer tap set into vanity unit.

LOUNGE

12'4" x 13'7" (3.78 x 4.16)

A dual aspect lounge with uPVC double glazed windows to the front and side. With painted decor, laminate flooring and a central heating radiator.

STAIRS & LANDING

Staircase located off the lounge leading up to the first floor. With painted decor, carpet and a central heating radiator.

KITCHEN

12'4" x 10'11" (max) (3.77 x 3.33 (max))

A modern kitchen with wall and base units and wood effect worktop and tiled splashback. With 1.5 sink and drainer with chrome mixer hose tap, electric oven, 4 ring gas hob and extractor. Space for a large freestanding fridge freezer and plumbing for a washing machine. With painted decor, tiled floor and a uPVC double glazed window overlooking the garden. There is also a large under stairs storage cupboard.

BEDROOM ONE

12'5" x 10'10" (3.79 x 3.32)

A dual aspect double bedroom with side and front facing uPVC double glazed windows. Painted decor, laminate flooring and a central heating radiator.

BEDROOM TWO

12'4" x 7'9" (3.78 x 2.37)

A double bedroom with painted decor, laminate flooring, a central

heating radiator and a uPVC double glazed window. There is also a storage cupboard which sits over the stairs.

BATHROOM

6'2" x 5'2" (1.88 x 1.59)

A modern bathroom with white suite comprising of a panelled bath with mixer shower over, low flush W.C and sink with chrome mixer tap set into wood effect vanity unit. Painted decor with tiling to the shower area, tiled flooring, a central heating radiator and a uPVC double glazed window with frosted glass.

GARAGE

17'4" x 8'8" (5.29 x 2.65)

A single garage with up and over garage door, power and lighting.

OUTSIDE

The garden is fully enclosed with a patio area, the rest is laid to lawn with raised borders. A gate leads out to the driveway and detached garage. There is a gravel driveway suitable for 2-3 cars.

GENERAL INFORMATION

Tenure: Freehold

uPVC Double Glazing

Gas Central Heating

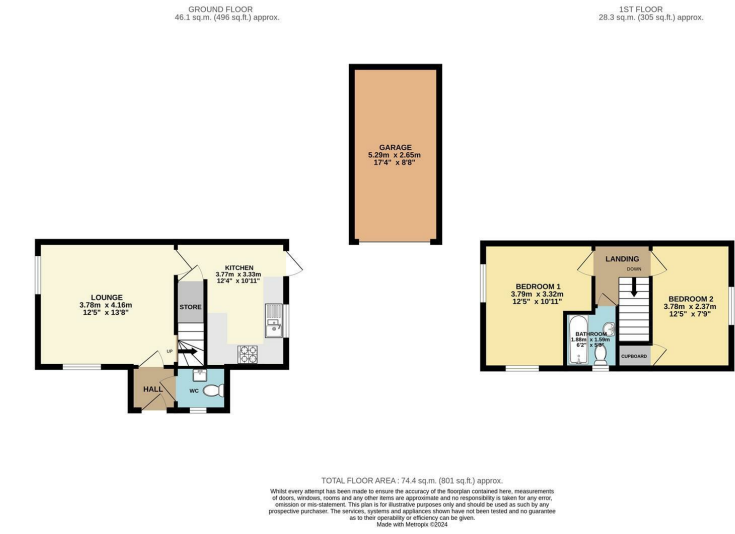
Council Tax Band-B

EPC Rating-B

DISCLAIMER

These particulars do not constitute part or all of an offer or contract. While we endeavour to make our particulars fair, accurate and reliable, they are only a general guide to the property and, accordingly. If there are any points which are of particular importance to you, please check with the office and we will be pleased to check the position.





DISCLAIMER

GENERAL - Whilst Pinewood Property Estates endeavour to make our sales particulars accurate they do not constitute or form part of an offer or any contract and none are to be relied upon as statements of representation or fact. Please be advised that some of the particulars may be awaiting vendor approval. If you require clarification or further information on any points, please contact Pinewood Properties, especially if you are travelling some distance to view.

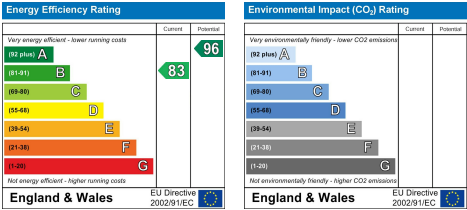
SERVICES, SYSTEMS AND APPLIANCES listed in this advertisement have not been tested by Pinewood Property Estates and no guarantee as to their operating ability or efficiency is given. We strongly advise prospective buyers to commission their own survey or service reports before finalising their offer to purchase.

MEASUREMENTS have been taken as a guide to prospective buyers only, and are not precise. You must verify the dimensions carefully before ordering carpets or any built-in furniture.

FIXTURES AND FITTINGS may be mentioned in the advertisement but all these may not be included in the sale and are to be agreed with the seller.

MONEY LAUNDERING REGULATIONS - Intending purchasers will be asked to produce identification documentation at a later stage and we would ask for your co-operation in order that there will be no delay in agreeing the sale.

You may download, store and use the material for your own personal use and research. You may not republish, retransmit, redistribute or otherwise make the material available to any party or make the same available on any other website



Mansfield branch
24 Albert Street
Mansfield, NG1
01263 621001

Clowne branch
26 Mill Street,
Clowne, S43 4JN
01246 810519

Clay Cross branch
20 Market Street,
Clay Cross, S45 9JE
01246 251194

Chesterfield branch
33 Holywell Street,
Chesterfield, S41 7SA
01246 221039

PINEWOOD

