

PINEWOOD



Shuttlewood Road, Bolsover, Chesterfield, Derbyshire S44 6NX

 3  2  2  EPC D

£270,000



VERSATILE LIVING OPTIONS...are the highlight of this detached bungalow on Shuttlewood Road in Bolsover. Built in 1952, this bungalow exudes options and offers scope for modernisation, allowing you to tailor the space to your personal taste and style. Situated close to local amenities, you'll have everything you need within reach, making daily life a breeze.

The ground floor accommodation consists of a front facing good size lounge with feature fireplace and large conservatory dining room both offering far reaching views over beautiful countryside. There are two double bedrooms, one is currently used as an office, along with a bathroom offering a free standing bath and separate shower. To the rear is a kitchen with a range of wall and base units along with space for a free standing range cooker, fridge freezer, dishwasher and washing machine.

The first floor provides a large attic bedroom with recess storage space and an ensuite shower room.

The separate annexe offers an open plan living, bedroom and kitchen area along with an separate shower room. It is perfect for independent teenagers, older relatives, or even as an Airbnb option and adds a touch of versatility to this already charming property.

Outside there is ample off street driveway parking to the front and side of the property and to the rear is a low maintenance tiered garden.

DO NOT MISS THE OPPORTUNITY TO OWN THIS UNIQUE PROPERTY. TO ARRANGE A VIEWING, PLEASE CALL PINWOOD PROPERTIES ON 01246 810519

- THREE BEDROOM DETACHED DORMA BUNGALOW
- DRIVEWAY PARKING FOR SEVERAL VEHICLES
- LARGE CONSERVATORY/DINING ROOM
- TIERED REAR GARDEN
- COUNCIL TAX BAND C
- ANNEXE WITH BEDROOM, LIVING SPACE, KITCHEN & SHOWER ROOM
- ATTIC BEDROOM WITH ENSUITE SHOWER ROOM
- FAR REACHING VIEWS OVER COUNTRYSIDE
- FREEHOLD
- uPVC DOUBLE GLAZING & GAS CENTRAL HEATING

KITCHEN

16'0" x 8'6" (4.90 x 2.60)

Entering via a uPVC side door into the rear facing kitchen with wall and base units and contrasting worktop. There is a stainless steel double sink and space for a free standing range cooker, fridge freezer, dishwasher and plumbing for a washing machine. Painted decor, lino flooring and uPVC double glazed window.

HALLWAY

12'8" x 7'3" (3.87 x 2.22)

Providing access to all ground floor rooms via internal doors. Painted decor, carpet and central heating radiator.

BATHROOM

8'11" x 8'6" (2.73 x 2.61)

Ground floor family bathroom with free standing roll top bath, separate walk in shower, pedestal sink and low flush WC. There is painted decor and partial tiling, lino flooring, central heating radiator and side facing uPVC double glazed window with frosted glass.

LOUNGE

14'11" x 11'10" (4.56 x 3.63)

A bright front facing lounge with feature fireplace and log burner. Painted decor, wood effect lino flooring, central heating radiator and a large uPVC bay window.

CONSERVATORY DINING ROOM

15'6" x 14'9" (4.73 x 4.52)

A large conservatory currently used as a dining with views over the countryside provided by full size uPVC windows to two sides. Painted decor, lino flooring and central heating radiator.

BEDROOM

12'4" x 10'7" (3.77 x 3.23)

Currently used as an office with an internal window which looks into

the conservatory. Painted decor, lino flooring and central heating radiator.

BEDROOM

11'3" x 10'7" (3.44 x 3.23)

A rear facing double bedroom with wood effect flooring, painted decor, central heating radiator and uPVC double glazed window.

LOBBY/STAIRCASE

Currently used as a utility and store area with staircase up to the attic bedroom. There is painted decor, lino flooring and central heating radiator.

ATTIC BEDROOM WITH EN SUITE

15'7" x 14'5" (4.77 x 4.41)

A large bedroom with recess storage. There is a side facing velux window, painted decor, carpet and central heating radiator. The attic also benefits from an ensuite with walk in shower, sink with vanity unit and low flush WC.

ANNEXE

16'3" x 16'2" (4.97 x 4.95)

Situated to the rear of the property in the garden is a separate annexe with open plan living and kitchen space. The kitchen provides wall and base units with contrasting worktops, a stainless steel sink and integrated electric oven and hob along. The living space offers space for a double bed, wardrobe and sofa, along with a gas fire with surround. Painted decor, carpet and a uPVC window. The annexe also benefits from a Ensuite shower room with lino flooring. It has a walk in shower, low flush WC and sink.

OUTSIDE

To the front of the property is a large driveway providing ample off street parking. There is a lawned area and mature borders.

To the rear is a tiered low maintenance rear garden with a raised seating area and access to the annexe.

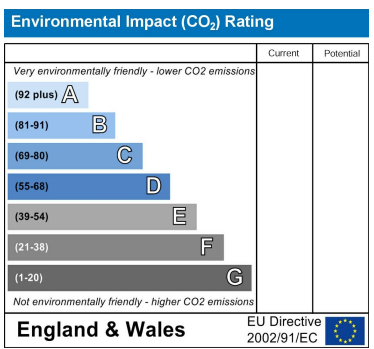
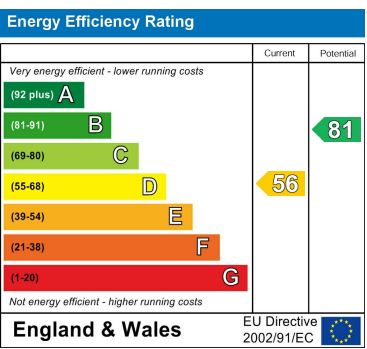
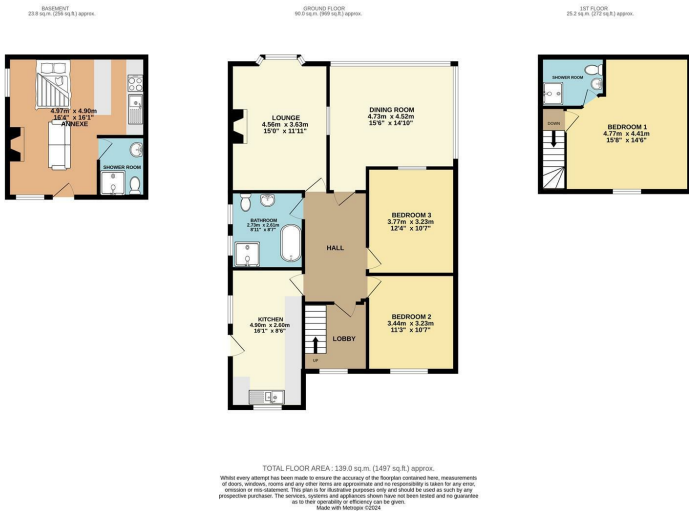


GENERAL INFORMATION

Tenure: FREEHOLD
Council Tax Band- C
Gas Central Heating
uPVC Double Glazing

DISCLAIMER

These particulars do not constitute part or all of an offer or contract. While we endeavour to make our particulars fair, accurate and reliable, they are only a general guide to the property and, accordingly. If there are any points which are of particular importance to you, please check with the office and we will be pleased to check the position.



DISCLAIMER

GENERAL - Whilst Pinewood Property Estates endeavour to make our sales particulars accurate they do not constitute or form part of an offer or any contract and none are to be relied upon as statements of representation or fact. Please be advised that some of the particulars may be awaiting vendor approval. If you require clarification or further information on any points, please contact Pinewood Properties, especially if you are travelling some distance to view.

SERVICES, SYSTEMS AND APPLIANCES listed in this advertisement have not been tested by Pinewood Property Estates and no guarantee as to their operating ability or efficiency is given. We strongly advise prospective buyers to commission their own survey or service reports before finalising their offer to purchase.

MEASUREMENTS have been taken as a guide to prospective buyers only, and are not precise. You must verify the dimensions carefully before ordering carpets or any built-in furniture.

FIXTURES AND FITTINGS may be mentioned in the advertisement but all these may not be included in the sale and are to be agreed with the seller.

MONEY LAUNDERING REGULATIONS - Intending purchasers will be asked to produce identification documentation at a later stage and we would ask for your co-operation in order that there will be no delay in agreeing the sale.

You may download, store and use the material for your own personal use and research. You may not republish, retransmit, redistribute or otherwise make the material available to any party or make the same available on any other website

Mansfield branch
24 Albert Street
Mansfield, NG1
01623 621001

Clowne branch
26 Mill Street,
Clowne, S43 4JN
01246 810519

Clay Cross branch
20 Market Street,
Clay Cross, S45 9JE
01246 251194

Chesterfield branch
33 Holywell Street,
Chesterfield, S41 7SA
01246 221039

PINEWOOD

