



Conduit Road, Bolsover, Chesterfield, S44 6TN

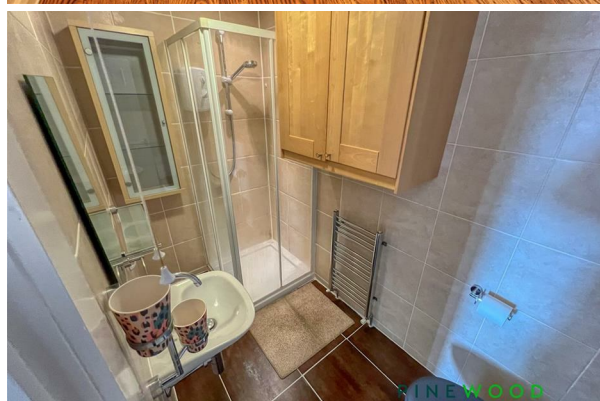
 3  2  2  C

£875 Per Calendar Month

PINEWOOD



Conduit Road Bolsover Chesterfield S44 6TN



£875 Per Calendar Month

**3 bedrooms
2 bathrooms
2 receptions**

- Ground Floor Bedroom One with Ensuite Shower Room
- Modern Kitchen/Diner
- Study/Second Reception Room
- Driveway Parking for 2/3 Cars
- Lounge with Doors Leading to Garden
- Three Double Bedrooms
- Far Reaching Views
- Split Level Family Home
- Security Deposit £1009
- Council Tax Band: B



Nestled in the charming Conduit Road, Bolsover, Chesterfield, Derbyshire S44, this detached house is a gem waiting to be discovered. Boasting 2 reception rooms, 3 bedrooms, and 2 bathrooms across 936 sq ft, this property offers ample space for comfortable living.

One of the highlights of this property is the split-level living arrangement, adding a touch of uniqueness to the layout. The master bedroom comes complete with an ensuite, providing a private sanctuary within your own home. The kitchen/diner is perfect for hosting gatherings or enjoying family meals together.

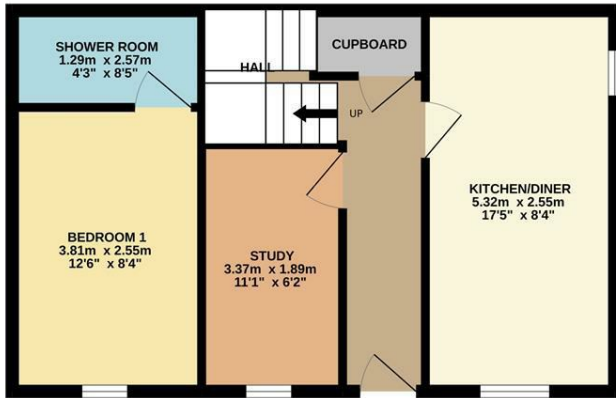
Outside, you'll find a private rear garden, ideal for relaxing in the fresh air or entertaining guests. Imagine sipping your morning coffee surrounded by nature or hosting a barbecue on a sunny weekend afternoon.

With parking space for 3 vehicles, you'll never have to worry about finding a spot after a long day. Additionally, the property offers great views from the front, adding to its appeal and creating a picturesque setting for your daily life.

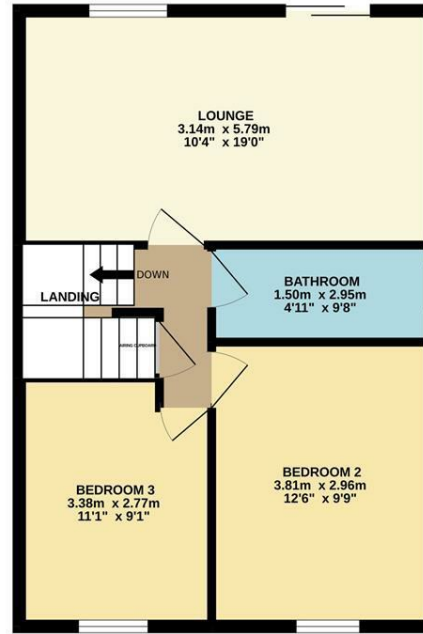
Don't miss out on the opportunity to make this house your home. Book a viewing today and step into the potential of what could be your new abode in the heart of Derbyshire.

****If you would like to view this property, or apply for it, please click the 'Request Details' button on Rightmove and enter your information****

GROUND FLOOR
41.3 sq.m. (444 sq.ft.) approx.

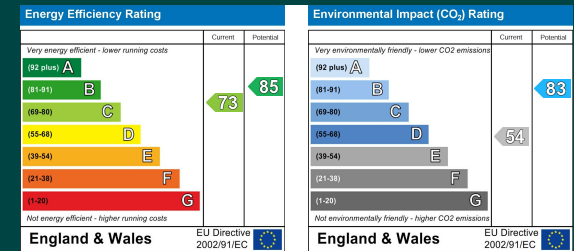


1ST FLOOR
45.7 sq.m. (492 sq.ft.) approx.



TOTAL FLOOR AREA : 87.0 sq.m. (936 sq.ft.) approx.

Whilst every attempt has been made to ensure the accuracy of the floorplan contained here, measurements of doors, windows, rooms and any other items are approximate and no responsibility is taken for any error, omission or mis-statement. This plan is for illustrative purposes only and should be used as such by any prospective purchaser. The services, systems and appliances shown have not been tested and no guarantee as to their operability or efficiency can be given.
Made with Metropix ©2022



Mansfield branch
24 Albert Street
Mansfield, NG1
01623 621001

Clowne branch
26 Mill Street,
Clowne, S43 4JN
01246 810519

Clay Cross branch
20 Market Street,
Clay Cross, S45 9JE
01246 251194

Chesterfield branch
33 Holywell Street,
Chesterfield, S41 7SA
01246 221039

PINEWOOD

