

PINEWOOD



Skinner Street, Creswell, Worksop, Notts S80 4JN

 3  1  3  EPC C

Offers In The Region Of £215,000



Welcome to this charming semi-detached house located on Skinner Street in the delightful area of Creswell, Worksop. This property boasts a generous 965 sq ft of living space, perfect for a family looking for a new home.

Upon entering, you are greeted by a well-appointed kitchen, ideal for preparing delicious meals and hosting gatherings. The property features not just one, but three reception rooms, offering ample space for relaxation, entertainment and perhaps even a home office setup.

With three bedrooms, there is plenty of room for the whole family to unwind and rest comfortably. The bathroom provides convenience and privacy for all residents.

One of the standout features of this property is the separate outbuilding store, providing additional storage space or the potential for a workshop or hobby area. The enclosed rear garden offers a private outdoor sanctuary, perfect for enjoying a morning coffee or hosting summer barbecues.

Parking is made easy with space for two vehicles, ensuring you never have to worry about finding a spot after a long day.

Don't miss out on the opportunity to make this extended property your new home. Contact us today to arrange a viewing and envision the possibilities that this lovely residence has to offer.

- EXTENDED SEMI-DETACHED
- SPACIOUS KITCHEN
- UPVC
- GROUND FLOOR WC
- FREEHOLD
- THREE BEDROOMS
- THREE RECEPTION ROOMS
- GAS BOILER CENTRAL HEATING
- OFF STREET PARKING
- COUNCIL TAX BAND: B

ENTRANCE HALL

Having a uPVC door with a small window either side, fitted carpet, a central heating radiator and having the advantage of a WC / cloakroom in the space under the stairs.

LOUNGE

With a uPVC bay window and curved central heating radiator to the front aspect, with decorative coving, a central light fitting and two wall mounted lights, a live inset gas fire with surround, a central heating radiator and fitted carpet.

SITTING ROOM

To the rear aspect with gas fire and surround, a central heating radiator and a fitted carpet, and an arch leads through to the dining room.

DINING ROOM

With double doors that lead to the rear garden.

KITCHEN

An extended kitchen giving plenty of storage space along with a square edge worktop and upstand. with a composite style sink with a quarter bowl and drainer, currently there is a gas cooker with splash back and chimney and the benefit of an integrated fridge & freezer with space under the counter for a washing machine. Looking out to the rear garden is a uPVC window and the room is finished off with a fully tiled floor.

WC

A low flush WC and a window with opaque glass, access here for the combination boiler.

BEDROOM ONE

With a uPVC window looking out to the rear aspect, fitted carpet, a central heating radiator and fitted wardrobes.

BEDROOM TWO

With a uPVC window to the front aspect, fitted carpet and a central heating radiator.

BEDROOM THREE

A single bedroom with uPVC window, central heating radiator and fitted carpet.

FAMILY BATHROOM

A light and bright fully tiled four piece bathroom with bath tub, shower cubicle, pedestal wash basin and low flush WC, with uPVC window, a towel radiator and a vinyl floor.

OUTSIDE

Having a lawn to the front aspect, a drive that leads through to gates and access at the side of the property. A further gate leads to an enclosed rear garden with a patio area, a lawn and a raised deck currently hosting a free standing shed.

OUTBUILDING

A brick built pitched roof outbuilding with light and power, a uPVC door and window with opaque glass.

DISCLAIMER

These particulars do not constitute part or all of an offer or contract. While we endeavour to make our particulars fair, accurate and reliable, they are only a general guide to the



PINEWOOD



PINEWOOD



PINEWOOD



PINEWOOD



PINEWOOD



PINEWOOD



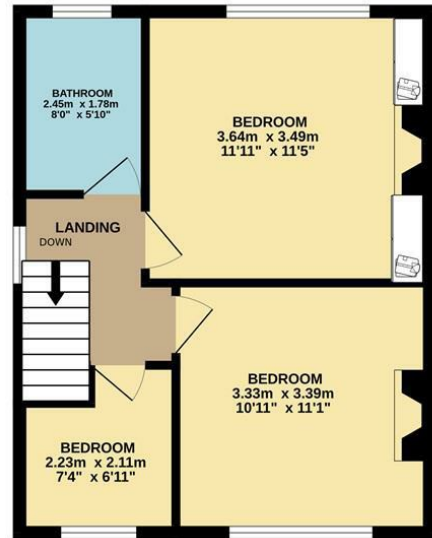
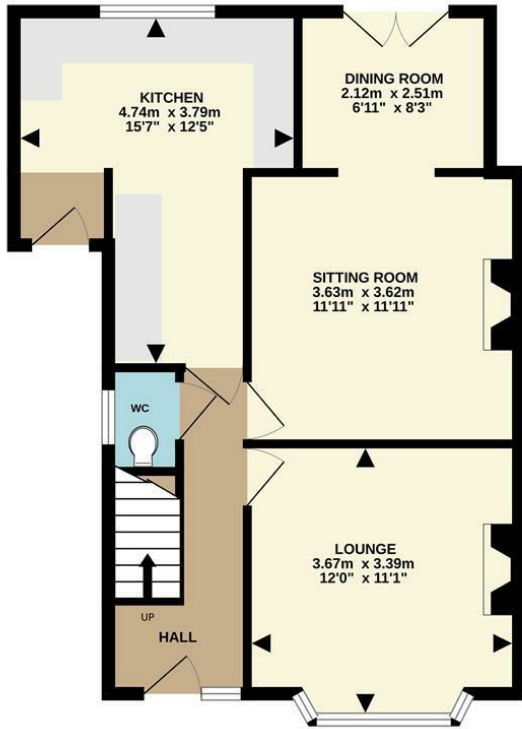
PINEWOOD



PINEWOOD

GROUND FLOOR
52.6 sq.m. (566 sq.ft.) approx.

1ST FLOOR
37.1 sq.m. (399 sq.ft.) approx.



TOTAL FLOOR AREA: 89.6 sq.m. (965 sq.ft.) approx.

Whilst every attempt has been made to ensure the accuracy of the floorplan contained here, measurements of doors, windows, rooms and any other items are approximate and no responsibility is taken for any error, omission or mis-statement. This plan is for illustrative purposes only and should be used as such by any prospective purchaser. The services, systems and appliances shown have not been tested and no guarantee as to their operability or efficiency can be given.
Made with Metropix ©2024



Energy Efficiency Rating		Current	Potential
Very energy efficient - lower running costs			
(92 plus) A			
(81-91) B			
(69-80) C			
(55-68) D			
(39-54) E			
(21-38) F			
(1-20) G			
Not energy efficient - higher running costs			
England & Wales	EU Directive 2002/91/EC	70	82

Environmental Impact (CO ₂) Rating		Current	Potential
Very environmentally friendly - lower CO ₂ emissions			
(92 plus) A			
(81-91) B			
(69-80) C			
(55-68) D			
(39-54) E			
(21-38) F			
(1-20) G			
Not environmentally friendly - higher CO ₂ emissions			
England & Wales	EU Directive 2002/91/EC		

DISCLAIMER

GENERAL - Whilst Pinewood Property Estates endeavour to make our sales particulars accurate they do not constitute or form part of an offer or any contract and none are to be relied upon as statements of representation or fact. Please be advised that some of the particulars may be awaiting vendor approval. If you require clarification or further information on any points, please contact Pinewood Properties, especially if you are travelling some distance to view.

SERVICES, SYSTEMS AND APPLIANCES listed in this advertisement have not been tested by Pinewood Property Estates and no guarantee as to their operating ability or efficiency is given. We strongly advise prospective buyers to commission their own survey or service reports before finalising their offer to purchase.

MEASUREMENTS have been taken as a guide to prospective buyers only, and are not precise. You must verify the dimensions carefully before ordering carpets or any built-in furniture.

FIXTURES AND FITTINGS may be mentioned in the advertisement but all these may not be included in the sale and are to be agreed with the seller.

MONEY LAUNDERING REGULATIONS - Intending purchasers will be asked to produce identification documentation at a later stage and we would ask for your co-operation in order that there will be no delay in agreeing the sale.

You may download, store and use the material for your own personal use and research. You may not republish, retransmit, redistribute or otherwise make the material available to any party or make the same available on any other website

Mansfield branch
24 Albert Street
Mansfield, NG1
01623 621001

Clowne branch
26 Mill Street,
Clowne, S43 4JN
01246 810519

Clay Cross branch
20 Market Street,
Clay Cross, S45 9JE
01246 251194

Chesterfield branch
33 Holywell Street,
Chesterfield, S41 7SA
01246 221039

PINEWOOD

