

PINEWOOD



Elmton View, Creswell, Worksop, S80 4PG

 4  2  2  EPC C

£290,000



LOOK NO FURTHER...Nestled in this popular residential area, is this spacious FOUR bedroom detached property that we think would be perfectly suited for a growing family looking for a place to call their own. As you arrive you will notice the property has a lovely driveway with lawns greeting you at the front leading to an integral garage. The entrance hall is spacious and has the benefit of a solid oak wood floor, leading to several of the reception rooms. Just off the entrance is a lovely, tiled WC. On then, to the modern fitted kitchen with high gloss door and drawer fronts with the units fitted to ceiling height, the worktops are granite, with integrated induction hob, oven, microwave and dishwasher and plumbing for a washing machine. There are two receptions rooms, a spacious lounge with double doors that open to the rear garden and a separate dining room. The first floor accommodates four bedrooms, one is the master with Ensuite, furthermore is a lovely family bathroom. Heading outside you will be pleased to find a large block paved driveway with lawns to either side, an integral garage with up and over door, patio stones on exit from the lounge and lawn areas that are not overlooked.

****Could this be your next move?***
** Call today to arrange your visit****

- **FOUR BEDROOM DETACHED**
- **GARAGE**
- **TWO RECEPTIONS ROOMS**
- **MASTER BEDROOM WITH EN-SUITE**
- **FREEHOLD**
- **LARGE DRIVEWAY**
- **MODERN FITTED KITCHEN**
- **GROUND FLOOR WC**
- **GREAT LOCATION WITH RURAL VIEW**
- **COUNCIL TAX BAND: D**

Entrance Hall

WC

Kitchen

Lounge

Dining Room

Bedroom 1

Ensuite

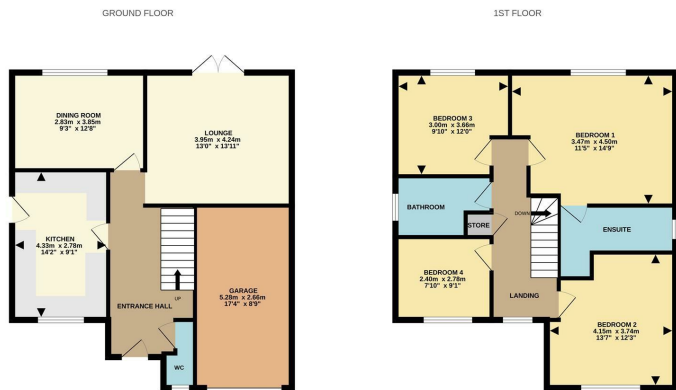
Bedroom Two

Bedroom Three

Bedroom Four

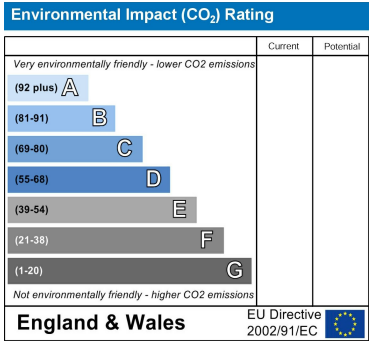
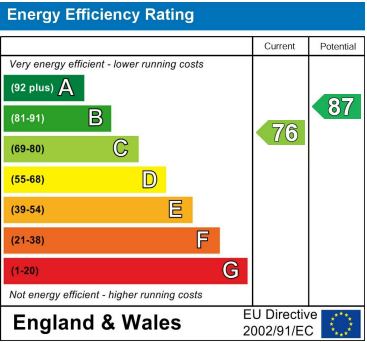
Family Bathroom





While every attempt has been made to ensure the accuracy of the floorplans contained here, measurements of doors, windows, stairs and any other items are approximate and no responsibility is taken for any error, omission or mis-statement. The plan is for illustrative purposes only and should be used as a guide to the prospective purchaser. The services, systems and appliances shown have not been tested and no guarantee is given for their operation or efficiency (see the green).

Made with Metageni C2024



DISCLAIMER

GENERAL - Whilst Pinewood Property Estates endeavour to make our sales particulars accurate they do not constitute or form part of an offer or any contract and none are to be relied upon as statements of representation or fact. Please be advised that some of the particulars may be awaiting vendor approval. If you require clarification or further information on any points, please contact Pinewood Properties, especially if you are travelling some distance to view.

SERVICES, SYSTEMS AND APPLIANCES listed in this advertisement have not been tested by Pinewood Property Estates and no guarantee as to their operating ability or efficiency is given. We strongly advise prospective buyers to commission their own survey or service reports before finalising their offer to purchase.

MEASUREMENTS have been taken as a guide to prospective buyers only, and are not precise. You must verify the dimensions carefully before ordering carpets or any built-in furniture.

FIXTURES AND FITTINGS may be mentioned in the advertisement but all these may not be included in the sale and are to be agreed with the seller.

MONEY LAUNDERING REGULATIONS - Intending purchasers will be asked to produce identification documentation at a later stage and we would ask for your co-operation in order that there will be no delay in agreeing the sale.

You may download, store and use the material for your own personal use and research. You may not republish, retransmit, redistribute or otherwise make the material available to any party or make the same available on any other website

Mansfield branch
24 Albert Street
Mansfield, NG1
01623 621001

Clowne branch
26 Mill Street,
Clowne, S43 4JN
01246 810519

Clay Cross branch
20 Market Street,
Clay Cross, S45 9JE
01246 251194

Chesterfield branch
33 Holywell Street,
Chesterfield, S41 7SA
01246 221039

PINEWOOD

