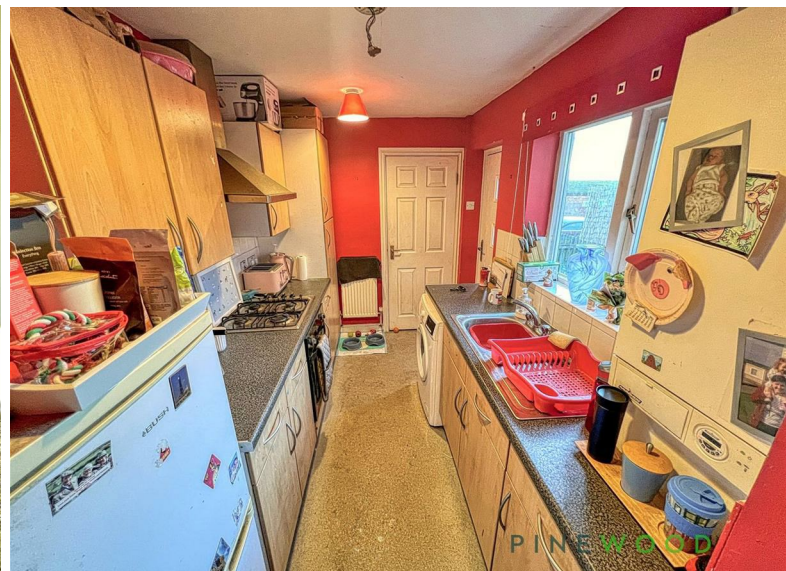


PINEWOOD



Model Village, Creswell, Worksop, Notts S80 4BW

 3  1  2  EPC D

£90,000



A REAL FIND... the space here may surprise you. Situated in the popular village of Creswell this three bedroom end terrace is close to local amenities such as schools, Creswell train station and local shops. we think this would be a great property for a first time buyer or an investor. The property has great character being in model village.

The accommodation is set over two floors, the ground floor has two reception rooms, a galley style kitchen and a ground floor WC, the first floor has three bedrooms and a family bathroom.

Outside has on street parking, a lawn to the front overlooking a park and a rear yard.

- End Terraced
- Two Reception Rooms
- Ground Floor WC
- Popular Residential Area
- Council Tax Band: A
- Three Bedrooms
- Galley Style Kitchen
- Lawn to the Front & Yard to Rear
- Overlooking A Park
- Tenure: Freehold

Entrance Hall

Lounge

With a central heating radiator, double glazed window and carpet flooring.

Dining Room

With central heating radiator, carpet floor cover and some storage under the stairs.

Kitchen

Having a galley style kitchen with stainless steel sink and drainer. Integrated gas hob. Integrated oven with enough room at the end of the units for 50-50 style fridge freezer, double glazed window looking into the rear.

Ground Floor WC

Bedroom One

With a double glazed window, central heating radiator, fitted carpet.

Bedroom Two

With a double glazed window, central heating radiator and fitted carpet.

Bedroom Three

With a double glazed window, central heating, radiator and fitted carpet.

Bathroom

Having a bathtub with tiled splashback, pedestal wash basin, central heating radiator and a low flush WC.

Outside

Outside rear yard to the front is a lawn area gated access looking out to the park.

Disclaimer

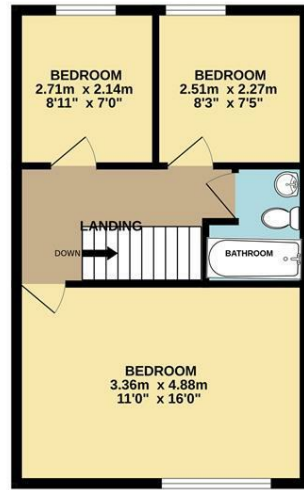
These particulars do not constitute part or all of an offer or contract. While we endeavour to make our particulars fair, accurate and reliable, they are only a general guide to the property and, accordingly. If there are any points which are of particular importance to you, please check with the office and we will be pleased to check the position.



GROUND FLOOR
47.7 sq.m. (514 sq.ft.) approx.

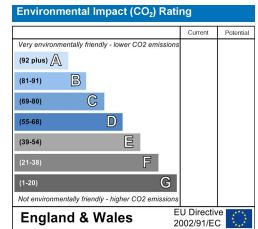
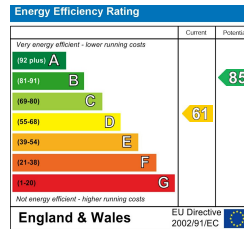


1ST FLOOR
38.7 sq.m. (416 sq.ft.) approx.



TOTAL FLOOR AREA : 86.4 sq.m. (930 sq.ft.) approx.

Whilst every attempt has been made to ensure the accuracy of the floorplan contained herein, measurements of doors, windows, rooms and any other items are approximate and no responsibility is taken for any error, omission or mis-statement. This plan is for illustrative purposes only and should be used as such by any prospective purchaser. The services, systems and appliances shown have not been tested and no guarantee as to their operability or efficiency can be given.
Made with Metropix ©2024



DISCLAIMER

GENERAL - Whilst Pinewood Property Estates endeavour to make our sales particulars accurate they do not constitute or form part of an offer or any contract and none are to be relied upon as statements of representation or fact. Please be advised that some of the particulars may be awaiting vendor approval. If you require clarification or further information on any points, please contact Pinewood Properties, especially if you are travelling some distance to view.

SERVICES, SYSTEMS AND APPLIANCES listed in this advertisement have not been tested by Pinewood Property Estates and no guarantee as to their operating ability or efficiency is given. We strongly advise prospective buyers to commission their own survey or service reports before finalising their offer to purchase.

MEASUREMENTS have been taken as a guide to prospective buyers only, and are not precise. You must verify the dimensions carefully before ordering carpets or any built-in furniture.

FIXTURES AND FITTINGS may be mentioned in the advertisement but all these may not be included in the sale and are to be agreed with the seller.

MONEY LAUNDERING REGULATIONS - Intending purchasers will be asked to produce identification documentation at a later stage and we would ask for your co-operation in order that there will be no delay in agreeing the sale.

You may download, store and use the material for your own personal use and research. You may not republish, retransmit, redistribute or otherwise make the material available to any party or make the same available on any other website

Mansfield branch
24 Albert Street
Mansfield, NG1
01623 621001

Clowne branch
26 Mill Street,
Clowne, S43 4JN
01246 810519

Clay Cross branch
20 Market Street,
Clay Cross, S45 9JE
01246 251194

Chesterfield branch
33 Holywell Street,
Chesterfield, S41 7SA
01246 221039

PINEWOOD

