



110 Byland Avenue
YO31 9AF
Guide Price £385,000



Situated on a good-sized plot at the end of this residential street, Churchills Estate Agents are delighted to offer for sale this impressive three bedroom semi-detached house close to Heworth Golf Club and Heworth Stray and nearby popular shops, schools and amenities.

This family sized home has recently been updated and maintained by the present owners to a very good standard throughout and benefitting from uPVC double glazing and gas central heating. The bright and airy living accommodation comprises: entrance porch, entrance hallway, lounge with bay window, recently upgraded kitchen, breakfast room with pantry, utility room, W.C/cloaks, first floor landing, three first double bedrooms and three piece house bathroom.

To the outside is a gravelled driveway providing ample off-street parking with the option for electric car charging. Rear lawned garden with patio, flower borders, vegetable patch, timber fenced boundary.

Large detached single garage with up and over door with power and lighting.

An accompanied viewing is strongly recommended.

Entrance Porch

uPVC entrance door and windows, laminate flooring, door to:

Entrance Hallway

uPVC windows to front and side, laminate flooring, power points, stairs to first floor, column radiator

Lounge

11'11" x 11'8" (3.63m x 3.56m)
uPVC bay window to front, laminate flooring, power points, spotlights

Kitchen

13'1" x 11'11" (3.99m x 3.63m)
Fitted wall and base units with counter top, double Belfast sink and mixer tap, free-standing range cooker, integrated dishwasher, sliding doors to patio, recessed spotlights, power points, tiled flooring

Breakfast Room

9'11" x 8'8" (3.02m x 2.64m)
uPVC window to side, door to side, fitted units with oak top, column radiator, tiled flooring, space for appliances, pantry cupboard





Utility Room

5'9" x 5'3" (1.75m x 1.60m)

uPVC window to rear, fitted units with oak top, column radiator, Belfast sink and mixer tap, wall mounted gas combination boiler, space and plumbing for appliances, single panelled radiator, tiled flooring

Cloaks/W.C.

Opaque window to rear, low level WC

First Floor Landing

uPVC window to side, loft access, carpeted floors

Bedroom 1

13'1" x 11'11" (3.99m x 3.63m)

uPVC window to rear, fitted wardrobes, single panelled radiator, carpet, power points

Bedroom 2

11'11" x 9'8" (3.63m x 2.95m)

uPVC window to front, storage cupboard, carpets, power points, single panelled radiator

Bedroom 3

9'5" x 8'8" (2.87m x 2.64m)

uPVC window to side, single panelled radiator, carpet and power points

Bathroom

Opaque uPVC window to front, P-shaped panelled bath with shower head over, tiled walls, tiled flooring, low level WC, wash hand basin, towel radiator, recessed spotlights, extractor fan

Outside

Gravelled driveway, side access to rear patio, lawn, flower borders, vegetable patch, timber fenced boundary



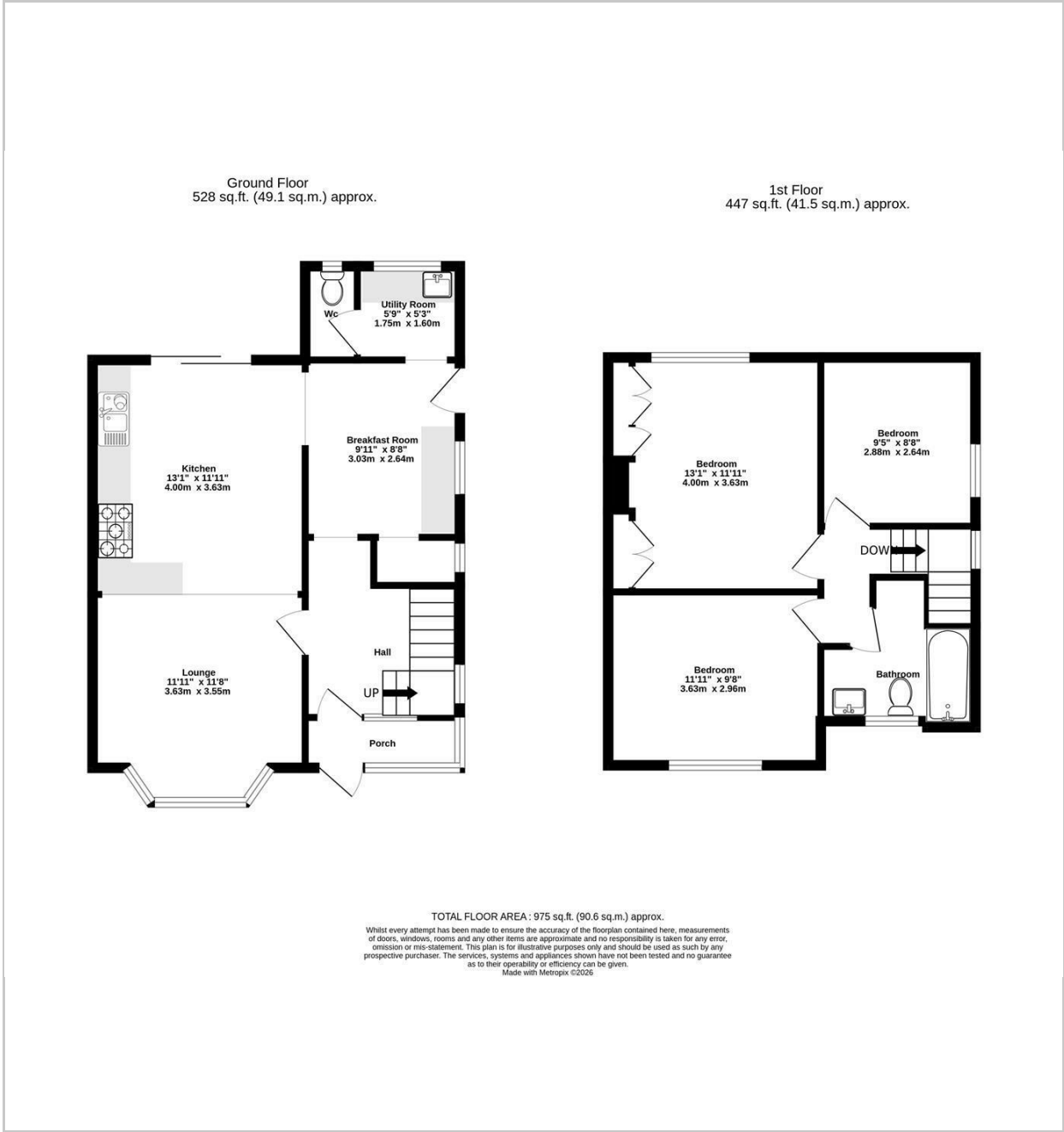
Garage

Up and over garage door, window and door to side, power and lighting

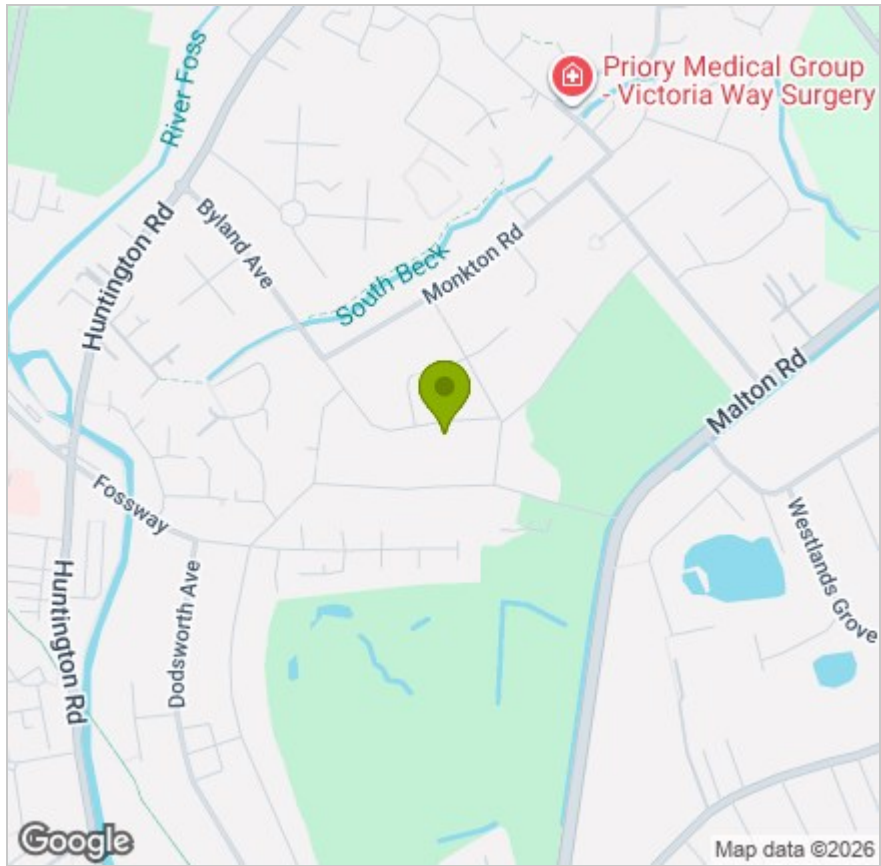
Agents note:

To be able to purchase a property in the United Kingdom all agents have a legal requirement to conduct Identity checks on all customers involved in the sales transaction to fulfil their obligations under Anti Money Laundering regulations. A charge to carry out these checks will apply. Please ask our office for further details.

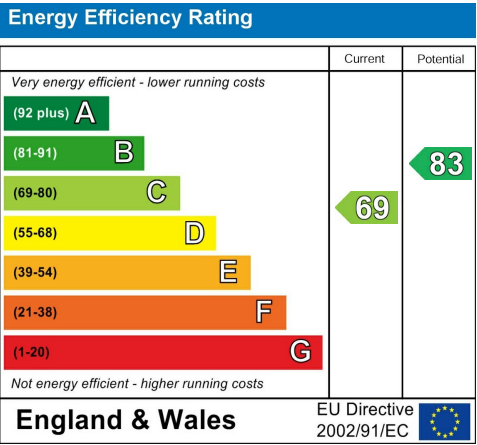
FLOOR PLAN



LOCATION



EPC



These particulars, whilst believed to be accurate are set out as a general outline only for guidance and do not constitute any part of an offer or contract. Intending purchasers should not rely on them as statements of representation of fact, but must satisfy themselves by inspection or otherwise as to their accuracy. No person in this firms employment has the authority to make or give any representation or warranty in respect of the property.