



The Pavement
York, YO1 9UP
£1,100 PCM

THIS TOP FLOOR ONE BEDROOM APARTMENT LOCATED IN THE CENTRE OF YORK IS FULL OF CHARACTER. This property comprises open plan living and dining area which leads onto a separate kitchen including all white goods. One double bedroom and a shower room.

A VIEWING IS STRONGLY RECOMMENDED TO SEE HOW UNIQUE THIS PROPERTY IS!

This property is let on an unfurnished basis.

Available early November

EPC rating E.

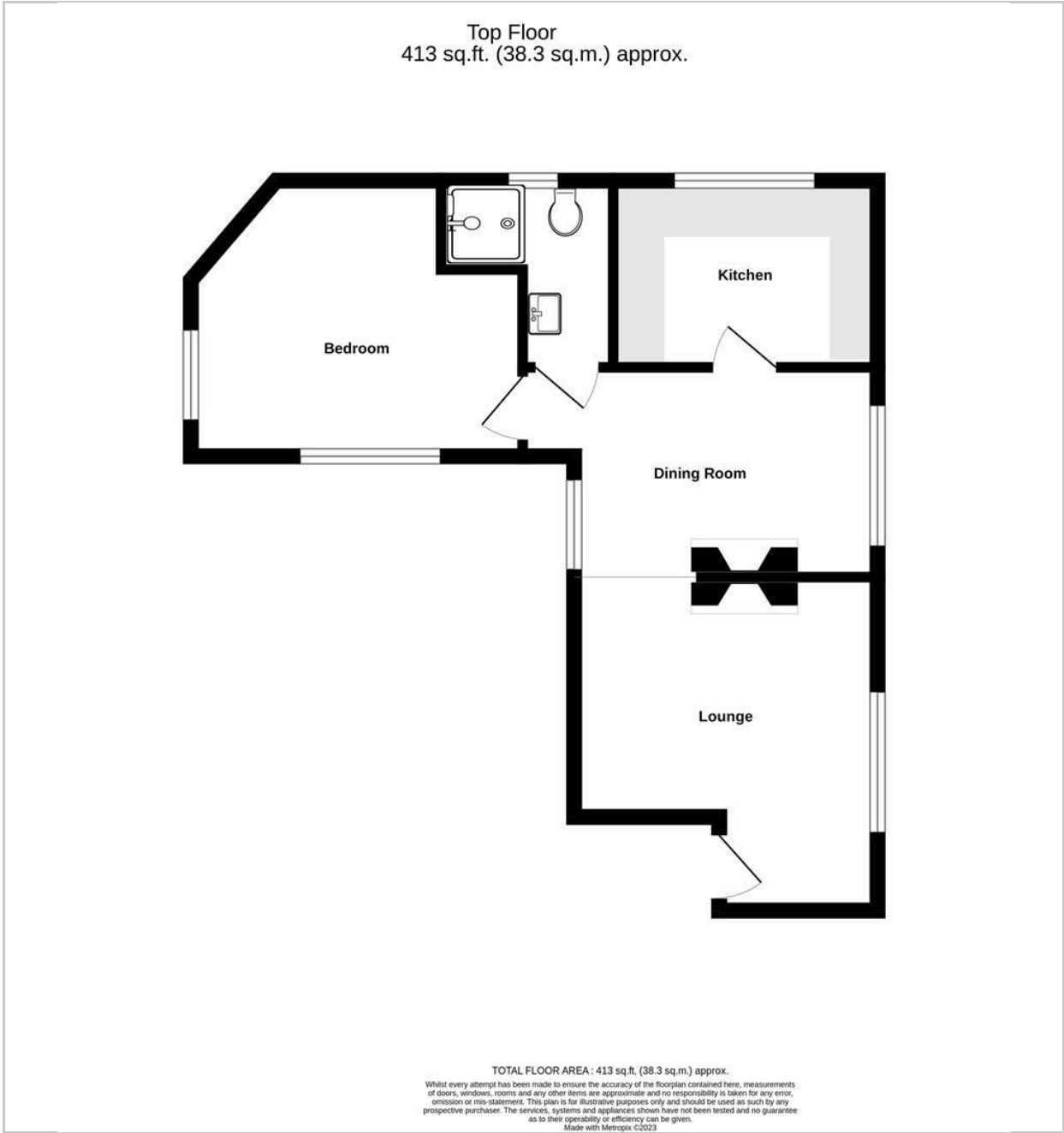
Council tax band A.

No parking.

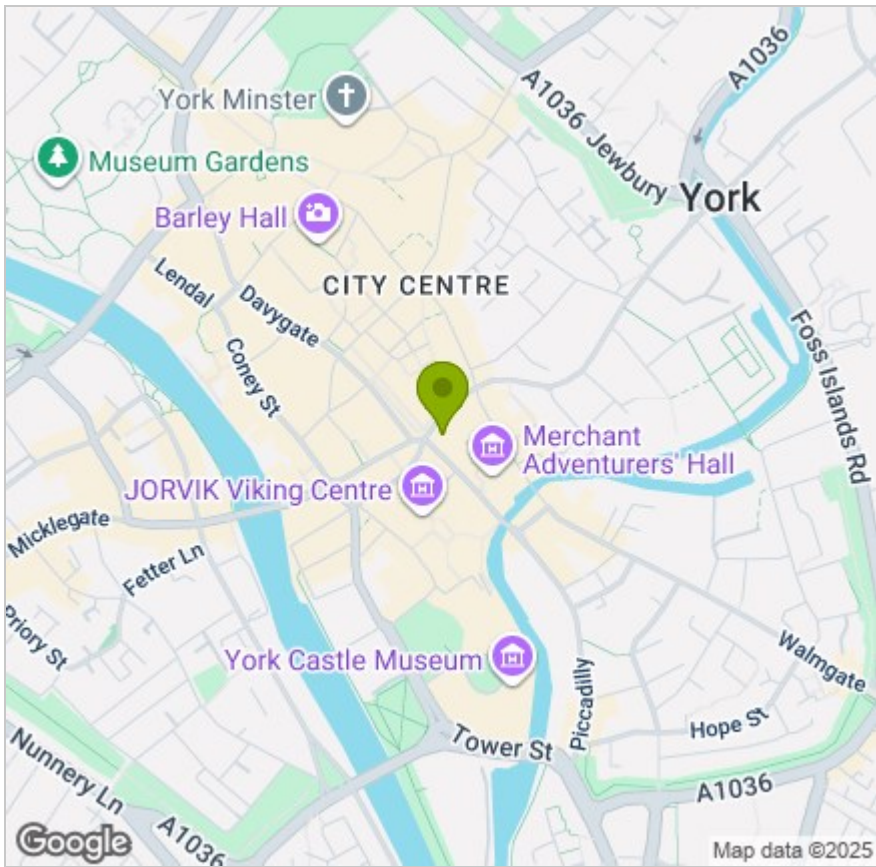




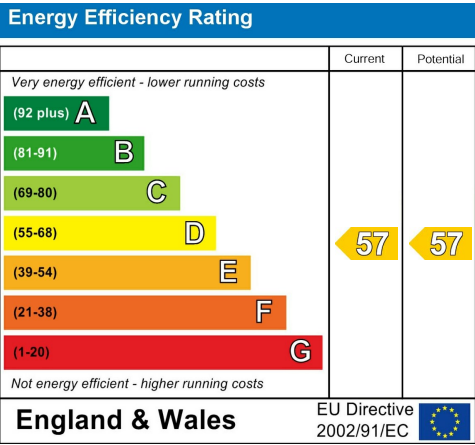
FLOOR PLAN



LOCATION



EPC



These particulars, whilst believed to be accurate are set out as a general outline only for guidance and do not constitute any part of an offer or contract. Intending purchasers should not rely on them as statements of representation of fact, but must satisfy themselves by inspection or otherwise as to their accuracy. No person in this firms employment has the authority to make or give any representation or warranty in respect of the property.