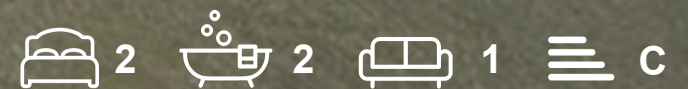




15 Fishergate House Blue Bridge Lane

York, YO10 4AT

**£275,000**





Part of an exclusive walled garden development, Churchills are delighted to offer for sale this two bedroom first floor Apartment with its own private entrance and allocated parking. Set in this highly sought after area of Fishergate the Apartment is well served by various local shops and amenities and is only within a few minutes walk of York City Centre via beautiful riverside walks and excellent road links. The property has access to the beautiful communal gardens and surroundings. The bright and airy living accommodation briefly comprises; entrance door with stairs to first floor hall/ landing, dual aspect lounge overlooking gardens, there is a modern fitted kitchen, double bedroom with fitted wardrobe with en-suite shower room, further double bedroom and family bathroom. To the outside is an allocated parking space, communal bike store and additional storage area as well as the beautiful gardens. An internal viewing is strongly recommended to appreciate the accommodation on offer.

## Lounge

French doors onto Juliet balcony overlooking communal gardens. Coving to ceiling, window to front, central heating radiator

## Kitchen

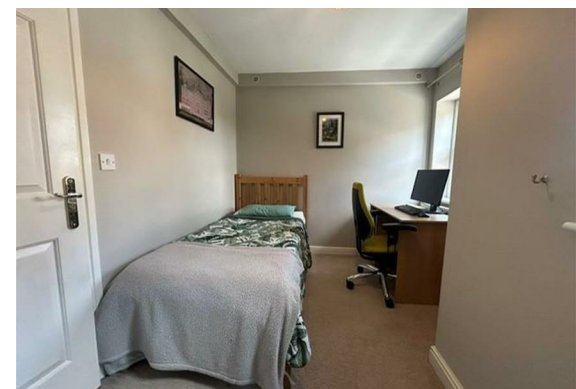
Well fitted with an excellent range of base and wall mounted units incorporating roll top surfaces, plumbing for automatic washing machine, electric oven, gas hob, extractor fan, tiled splashbacks, vinyl flooring, window to rear and side, central heating radiator

## Stairs to First Floor Landing

Loft access, central heating radiator

## Bedroom 1

Fitted wardrobes, window to rear, elevation, central heating radiator







### **En-Suite Shower Room**

Walk-in shower, low level WC, wall hung washbasin, part tiled walls, heated towel rail, vinyl flooring, hot water tank cupboard

### **Outside**

There are beautiful communal gardens and allocated visitor parking

### **Bedroom 2**

Two windows to front elevation, central heating radiator

### **Family Bathroom**

Panelled bath, pedestal wash hand basin, part tiled walls, low level WC, window to front

### **Lease/Service Charges**

Service charge is paid twice per annum. The July - December 2025 charge is £681.32. Leasehold is 999 years with 974 years remaining. Pepper ground rent



FLOOR PLAN

