



65 Finsbury Street  
York, YO23 1LT  
£1,200 Per Month



Two bedroom terraced house located in the sought after location of Southbank, close to York Knavesmire, Rowntree Park and within walking distance of York City Centre.

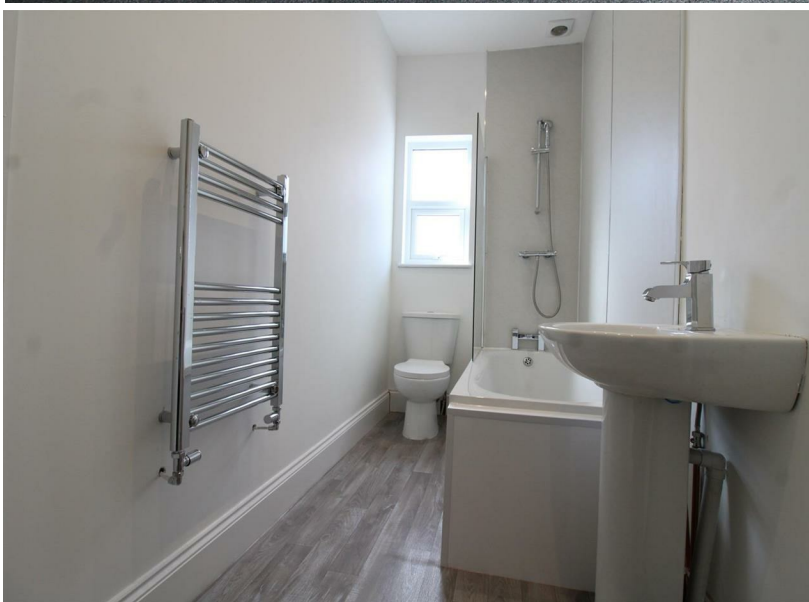
The property comprises a lovely lounge space leading to an open plan dining area and kitchen which overlooks the courtyard.

As you proceed up the stairs you are greeted by two bedrooms and an upstairs bathroom with bath and shower. The property is available in late July.

Council Tax Band A

EPC Rating D







FLOOR PLAN

