



28a Garnet Terrace Leeman Road
York, YO26 4XX
£875 PCM

****Modern Ground Floor Apartment****

This well presented one bedroom ground floor flat located just off Leeman Road is within walking distance of York City Centre and the railway station.

The property briefly comprises a lounge, kitchen with integrated cooker & ceramic hob, a washer/dryer and fridge freezer, double bedroom & shower room. The property benefits from a small enclosed rear yard and on street parking.

Sorry no pets

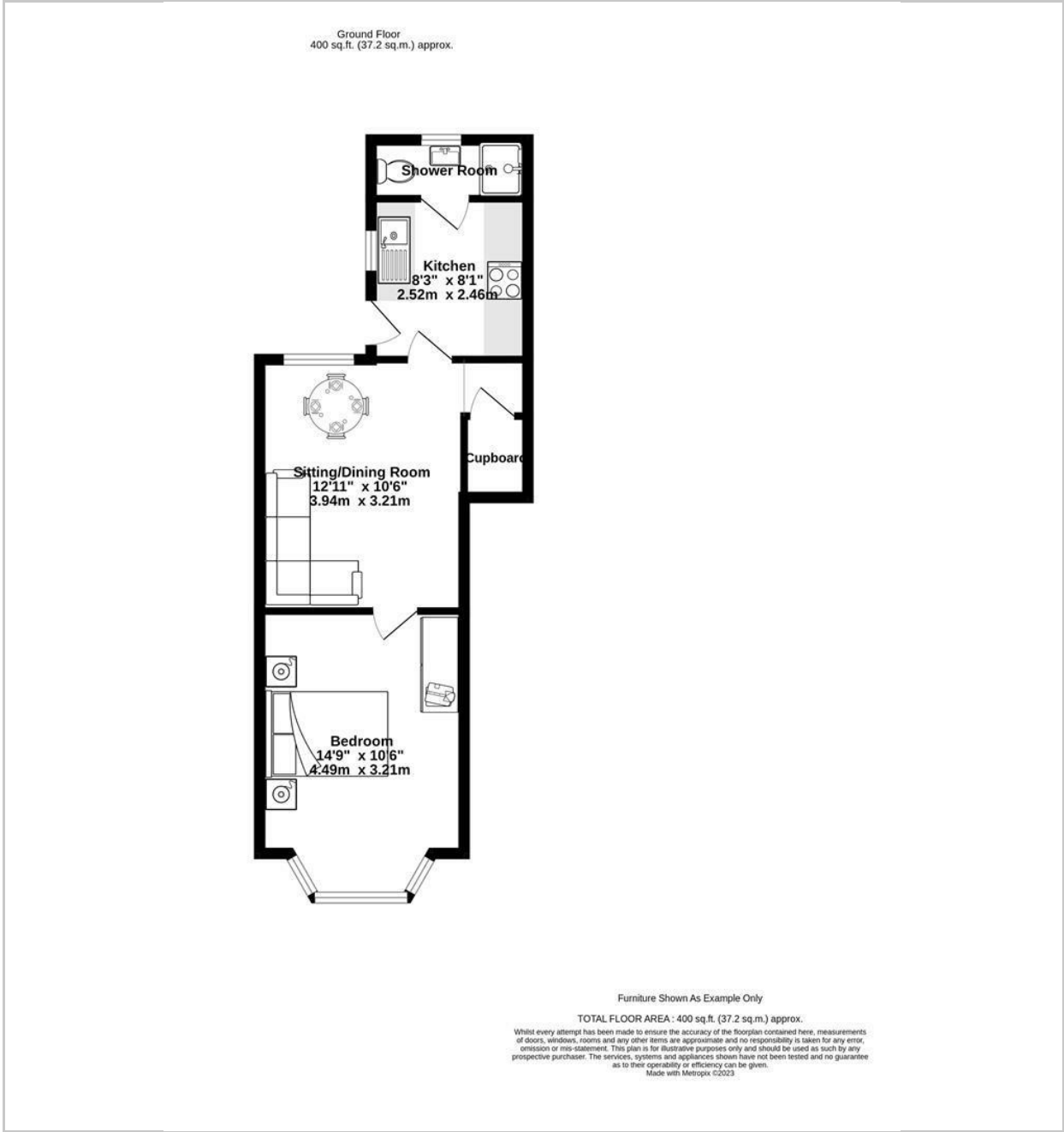
Available late July

EPC Rating E

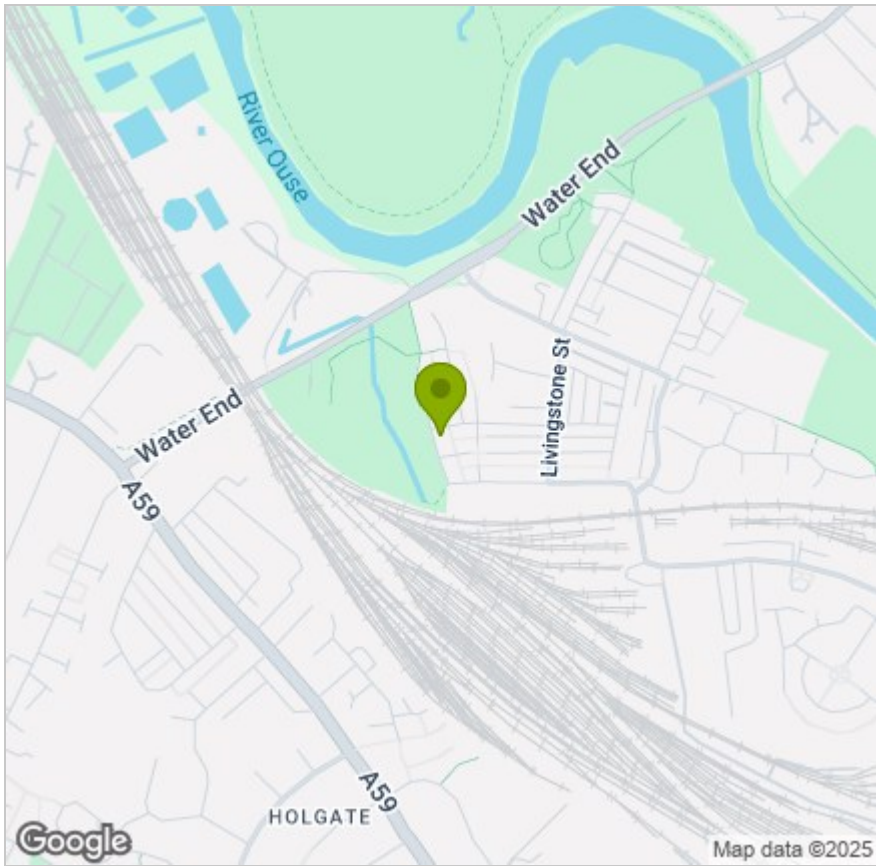
Council Tax Band A



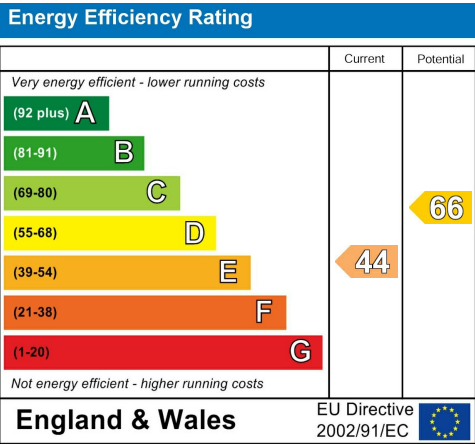
FLOOR PLAN



LOCATION



EPC



These particulars, whilst believed to be accurate are set out as a general outline only for guidance and do not constitute any part of an offer or contract. Intending purchasers should not rely on them as statements of representation of fact, but must satisfy themselves by inspection or otherwise as to their accuracy. No person in this firms employment has the authority to make or give any representation or warranty in respect of the property.