


Churchills

YORK'S INDEPENDENT LOCAL ESTATE AGENT

A photograph of a two-story brick terraced house with white bay windows and a grey door. The house is located at 22 Darnborough Street, Clementhorpe, York. The image shows the front facade with a black metal fence in the foreground. The house has a red brick exterior, white-painted bay windows, and a grey door with a black number plate displaying '22'. There are satellite dishes on the wall and a black downspout. A black metal fence runs along the front of the property.

22 Darnborough Street Clementhorpe

York, YO23 1AU

Guide Price £425,000



A FABULOUS LARGE 2 BEDROOM FORECOURTED PERIOD TOWN HOUSE SET IN ONE OF YORK'S MOST SOUGHT AFTER LOCATIONS. Close to the popular Bishopthorpe Road Shopping Parade and within easy walking distance of the Railway station and City centre This property provides bright and spacious living accommodation comprising entrance hall, lounge with bay window and original fireplace, separate dining room, good sized kitchen with full range of fitted units and built in oven and hob, first floor galleried landing, two double sized bedrooms and large bathroom suite fitted with shower and bath. To the rear of the property is a good sized well maintained courtyard. An internal viewing is recommended.

Hallway

Entrance door, stairs to first floor, stripped wood floor. Panelled doors to:

Lounge

14'3 x 10'8 (4.34m x 3.25m)

Bay window to front, ceiling cornicing, original fireplace, stripped wood floor.

Dining Room

13'3 x 11'0 (4.04m x 3.35m)

Window to rear, picture rail, stripped wood floor.

Kitchen

12'9 x 6'10 (3.89m x 2.08m)

Modern fitted units with base and wall units, work surfaces, built in oven and hob with extractor above, window to side, door to rear courtyard.

Landing

Spindled balustrade. Panelled doors to:

Bedroom 1

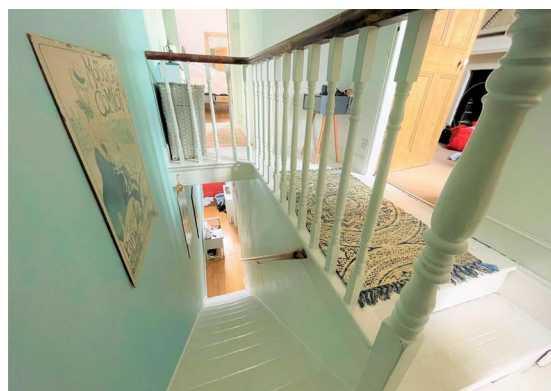
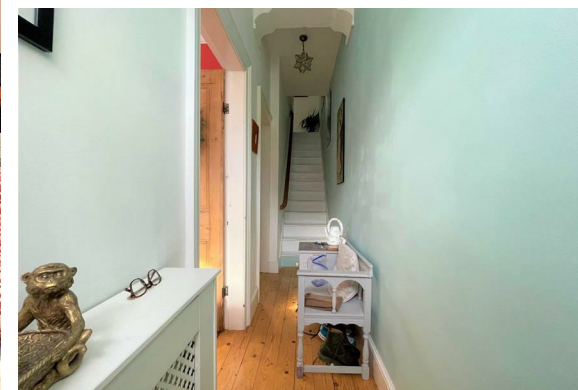
14'4 x 12'0 (4.37m x 3.66m)

Window to front, picture rail, stripped wood floor.

Bedroom 2

13'6 x 8'9 (4.11m x 2.67m)

Window to rear, carpet.



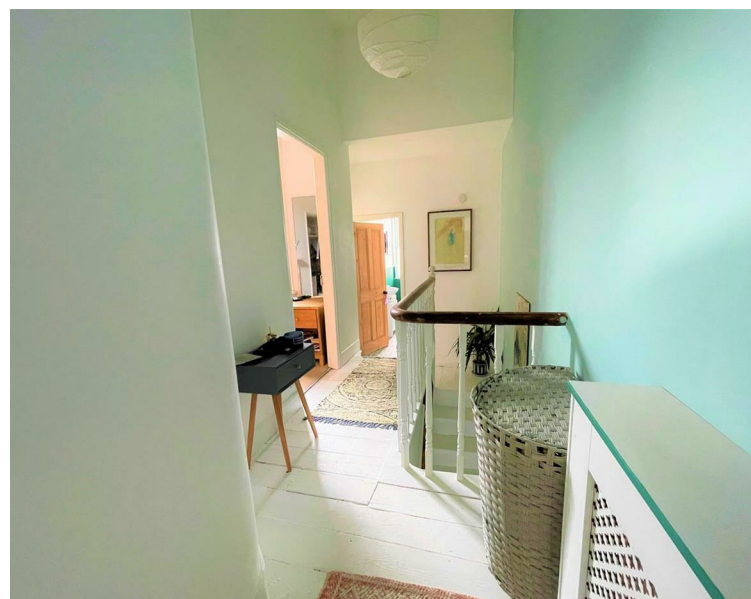


Bathroom

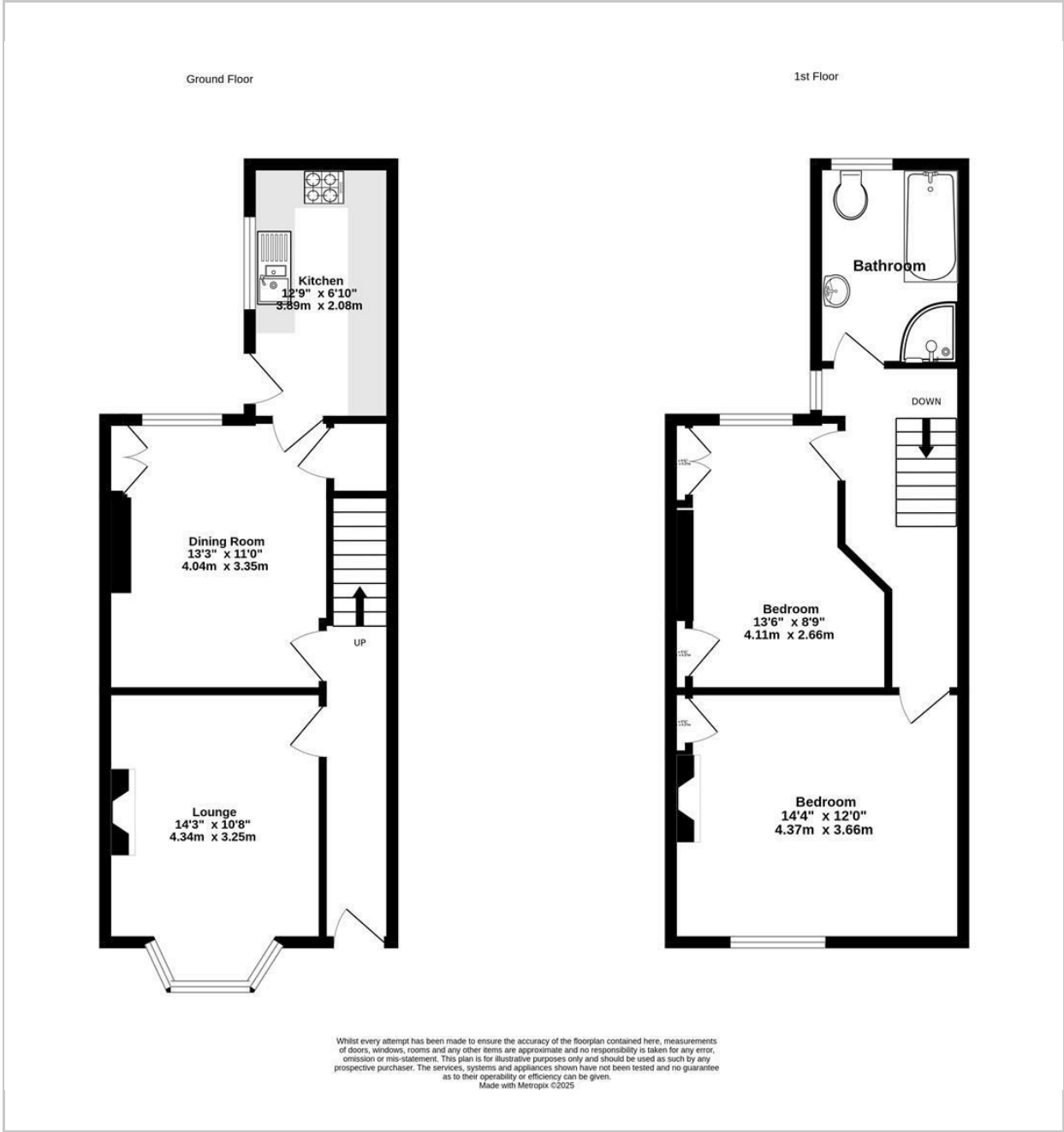
Suite in white comprising panelled bath, separate shower cubicle, wash hand basin, WC, window to rear

Outside

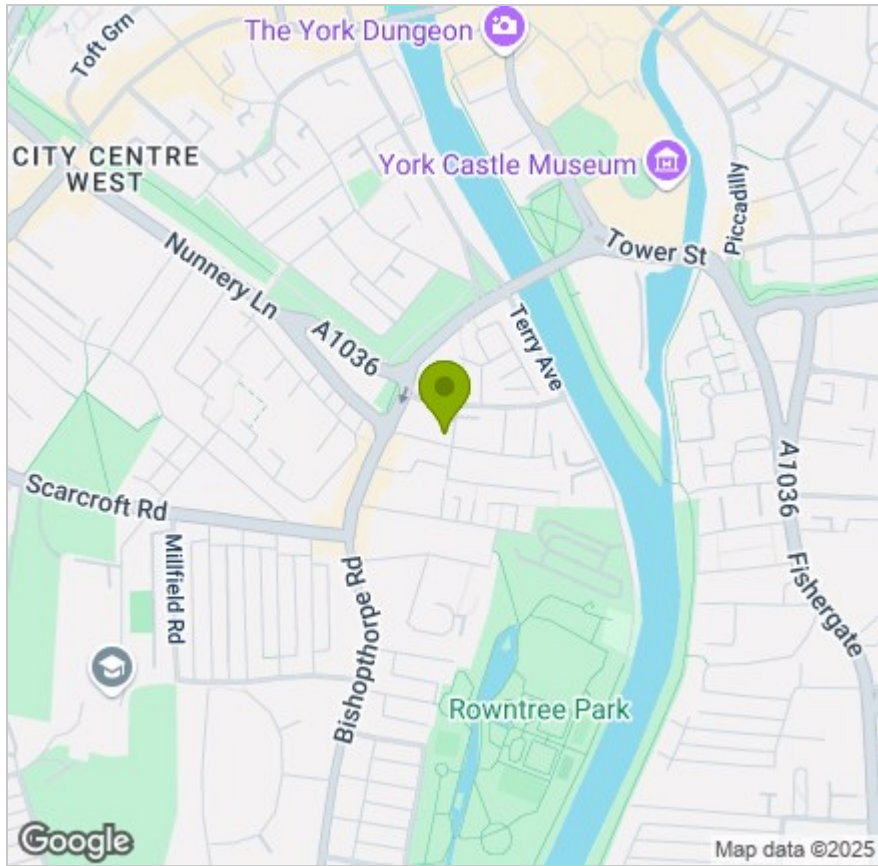
Walled rear courtyard with brick boundary wall and gate giving access to rear.



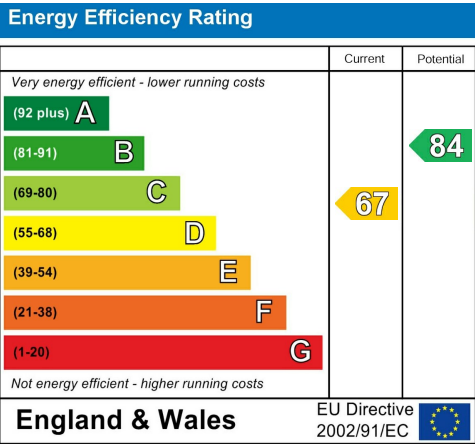
FLOOR PLAN



LOCATION



EPC



These particulars, whilst believed to be accurate are set out as a general outline only for guidance and do not constitute any part of an offer or contract. Intending purchasers should not rely on them as statements of representation of fact, but must satisfy themselves by inspection or otherwise as to their accuracy. No person in this firms employment has the authority to make or give any representation or warranty in respect of the property.