

106 Ryedale House
York, YO1 9NX
£2,400 Per Month

 2  1  1  c

Available Now.

This stunning and spacious 2 bed flat is located right in York City Centre, just by the River Foss. The central location provides many perks, such as easy access to a host of local amenities and attractions while also providing many bus and transport routes, guiding you around the local area.

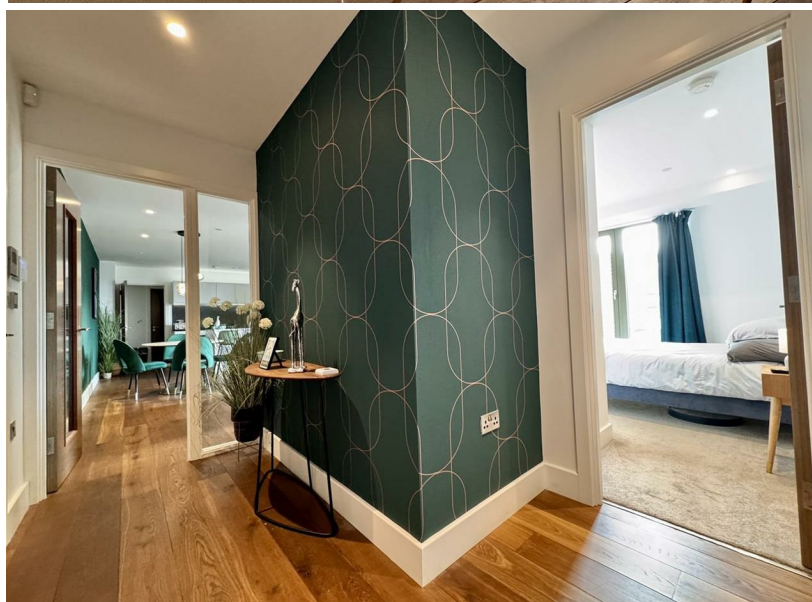
As you enter the flat, the lovely entrance hall leads you to a spacious and modern kitchen diner with white goods including fridge, freezer and dishwasher. A utility room with washer dryer and a separate WC are also available.

Moving round the flat, you're greeted by two, large double bedrooms, both benefiting from their own en-suites and storage cupboards.

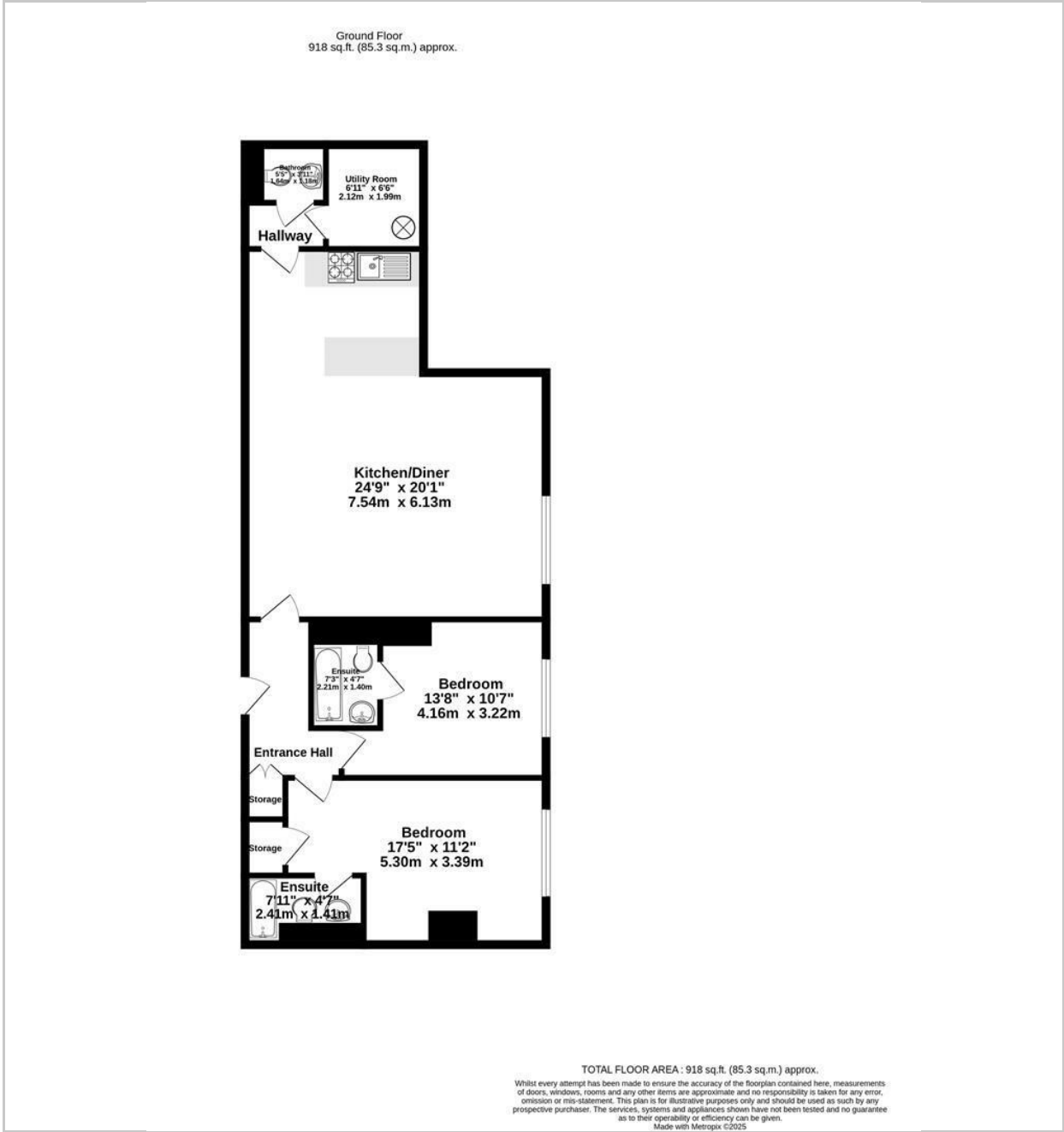
Featuring underfloor heating and fully furnished to a very high standard. Secure, off-street designated parking is available.

EPC C
Council Tax Band E

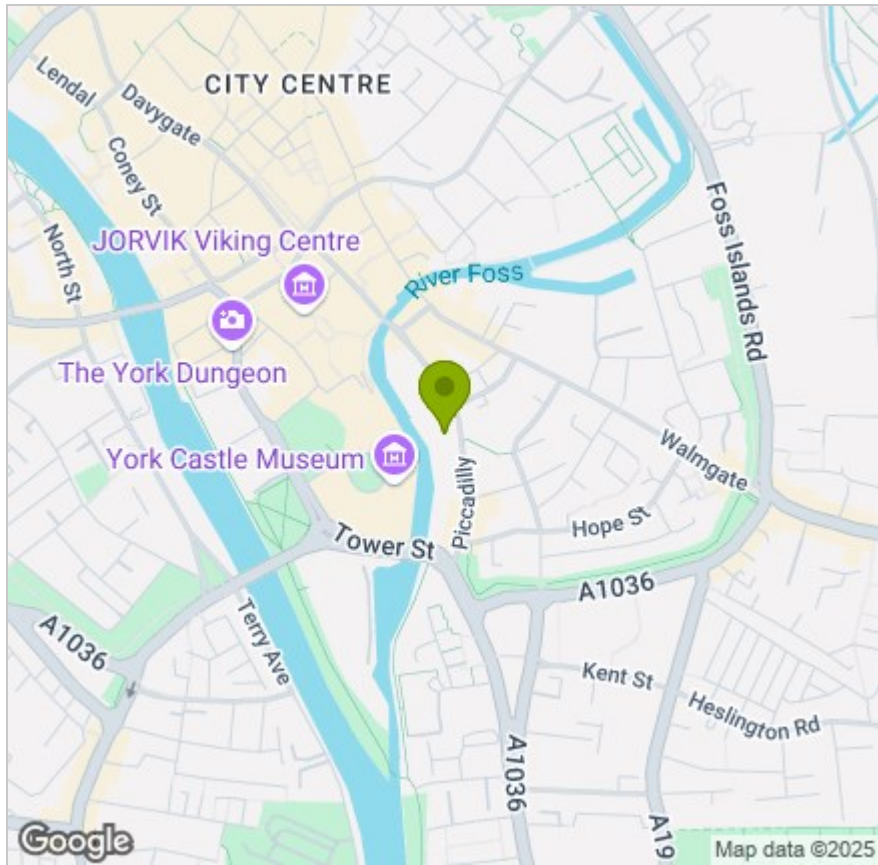




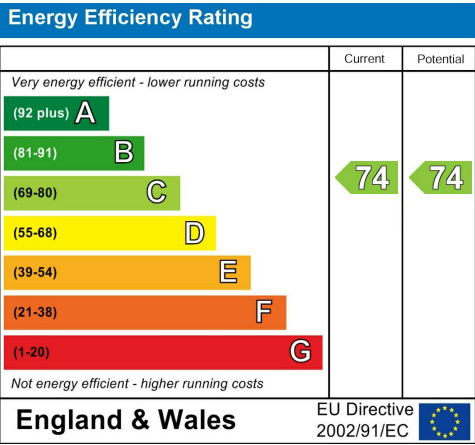
FLOOR PLAN



LOCATION



EPC



These particulars, whilst believed to be accurate are set out as a general outline only for guidance and do not constitute any part of an offer or contract. Intending purchasers should not rely on them as statements of representation of fact, but must satisfy themselves by inspection or otherwise as to their accuracy. No person in this firms employment has the authority to make or give any representation or warranty in respect of the property.