



40 Nunthorpe Road

York, YO23 1BG

Guide Price £450,000





**NO ONWARD CHAIN!** An extended four bedroom period forecourted town house with well presented open plan dining kitchen moments away from Bishopthorpe Road and Rowntree Park. Suitably situated for York's historic city centre and the railway station, this superb property is arranged over three floors and offers ample living accommodation, double glazing and modern central heating. The bright and airy living accommodation comprises entrance hallway, lounge with bay window, 23' dining kitchen with side extension and double doors onto courtyard, inner hall, three piece bathroom suite, first floor landing, three bedrooms (two doubles and one generous single) and a second floor double bedroom with shower en-suite and storage. To the outside is a gated front forecourt, rear walled courtyard with brick store and gate to service alleyway. An accompanied viewing is highly recommended.

**Entrance Hall**

uPVC entrance door, coving, corbels, dado rail, double panelled radiator, carpeted stairs to first floor. Tiled flooring.

**Lounge**

14'5 x 11'2 (4.39m x 3.40m)  
uPVC bay window to front, ceiling rose, coving, panelled door, electric fire with surround & marble hearth, double panelled radiator, TV point, power points. Carpet.

**Dining Area**

12'2 x 11'7 (3.71m x 3.53m)  
Ceiling rose, coving, double panelled radiator, built-in cupboards, power points, under stairs cupboard. Engineered oak wood flooring.

**Open Plan Kitchen**

14'3 x 11'5 (4.34m x 3.48m)  
Fitted range of wall and base units with countertop, stainless steel sink and draining board, built-in electric oven and hob, integrated dishwasher, uPVC French doors to courtyard, double panelled radiator, recessed velux, power points, recessed spotlights. Engineered oak wood flooring.

**Inner Hall**

Plumbing for washing machine, window to side, power points. Engineered oak wood flooring.







### Bathroom

Opaque uPVC double glazed window to side, panelled bath with electric shower over, wash hand basin, low level WC, towel rail/radiator, recessed spotlights, extractor. Engineered oak wood flooring with under floor heating.

### First Floor Landing

uPVC window to side, dado rail, power point, carpeted stairs to second floor. Carpet.

### Bedroom 1

14'8 x 12'3 (4.47m x 3.73m)

uPVC double glazed window to front, single panelled radiator, power points, storage cupboard. Carpet.

### Bedroom 3

12'2 x 9'4 (3.71m x 2.84m)

uPVC double glazed window to rear, single panelled radiator, power points, built-in wardrobe, cupboard. Carpet.

### Bedroom 4

8'8 x 7'1 (2.64m x 2.16m)

uPVC double glazed window to side, single panelled radiator, power points. Carpet.

### Second Floor Landing

Carpet. Door to;

### Bedroom 2

14'5 x 13'5 (4.39m x 4.09m)

Two Velux windows to front, double panelled radiator, power points, eaves storage. Carpet.

### En-Suite Shower Room

Walk-in mains shower unit, low level WC, wash hand basin, towel rail/radiator, two uPVC double glazed windows to rear, recessed spot lights, extractor fan. Carpet.

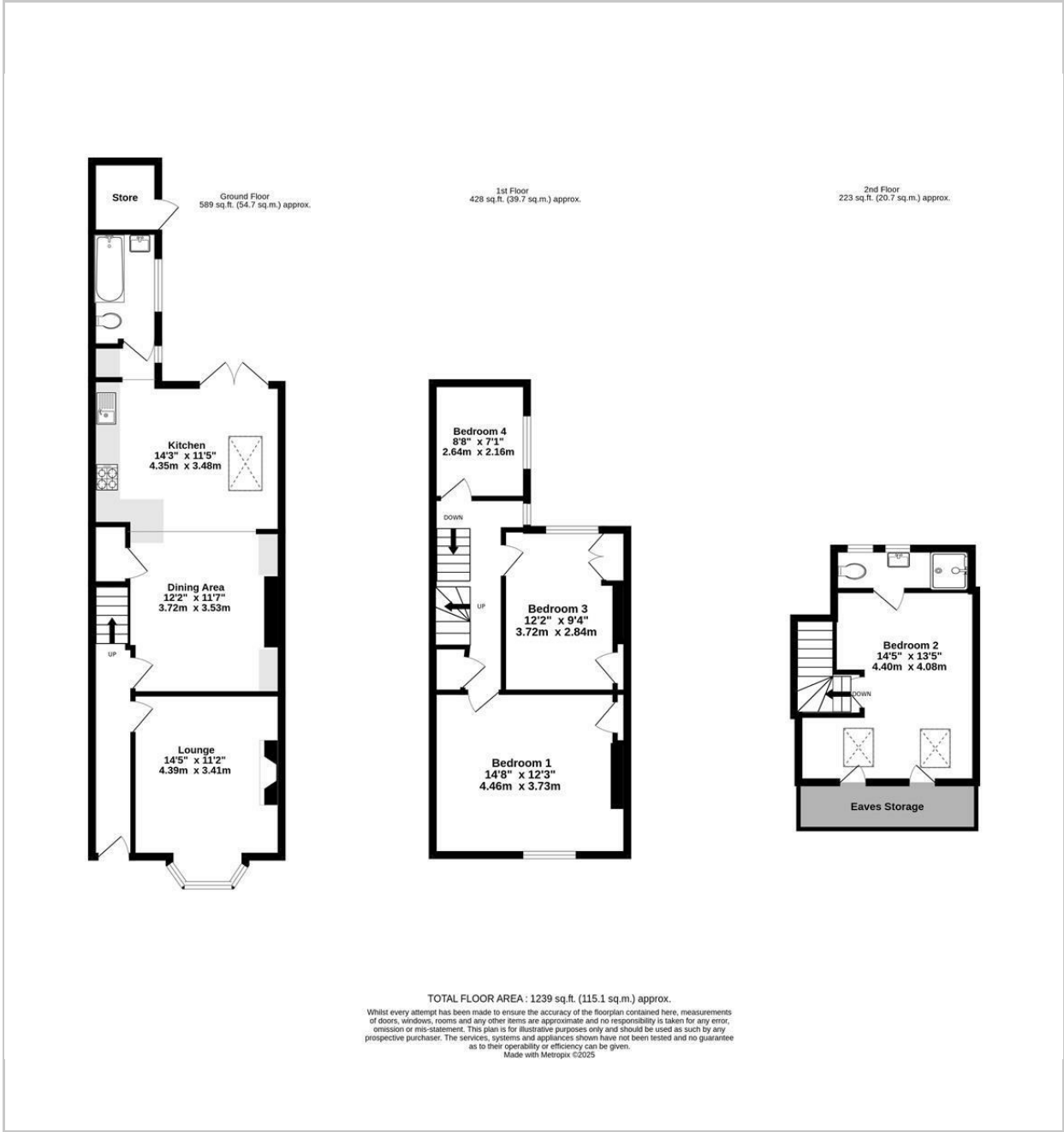
### Outside

Front forecourt, rear walled courtyard with artificial turf, brick store, rear access gate.





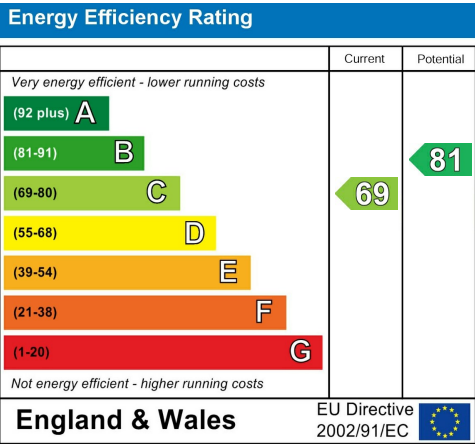
FLOOR PLAN



LOCATION



EPC



These particulars, whilst believed to be accurate are set out as a general outline only for guidance and do not constitute any part of an offer or contract. Intending purchasers should not rely on them as statements of representation of fact, but must satisfy themselves by inspection or otherwise as to their accuracy. No person in this firms employment has the authority to make or give any representation or warranty in respect of the property.