

2 Garfield Terrace  
York, YO26 4XU  
£169,500



NO ONWARD CHAIN! A STUNNING LARGE 1 BEDROOM SECOND FLOOR APARTMENT WITH VAULTED CEILINGS SET IN THIS POPULAR LOCATION CLOSE TO YORK CITY CENTRE. Entered via a communal hallway the property provides bright and extremely spacious living accommodation with the benefit of uPVC double glazing and comprises entrance hall, large lounge/dining room with vaulted ceiling, kitchen with modern fitted units, large bedroom also with vaulted ceiling, and a bathroom/WC. AN INTERNAL VIEWING IS STRONGLY RECOMMENDED TO APPRECIATE THE FEATURES AND SIZE.

**Entrance Hall**

Entrance door

**Hall**

Large built in cupboard. Doors leading to:

**Lounge/Dining Room**

20'0" x 12'2" (6.11m x 3.72m)

Windows to 2 aspects, vaulted ceiling with feature beams. Door leading to:

**Kitchen**

7'11" x 6'5" (2.43m x 1.97m)

Modern fitted base and wall units, work surfaces, built in oven and hob, plumbing for automatic washing machine.

**Bedroom**

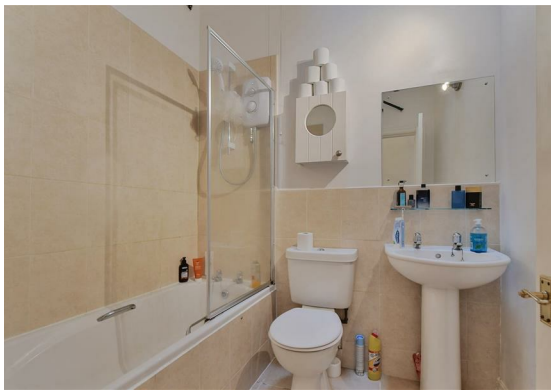
13'5" x 11'5" (4.11m x 3.49m)

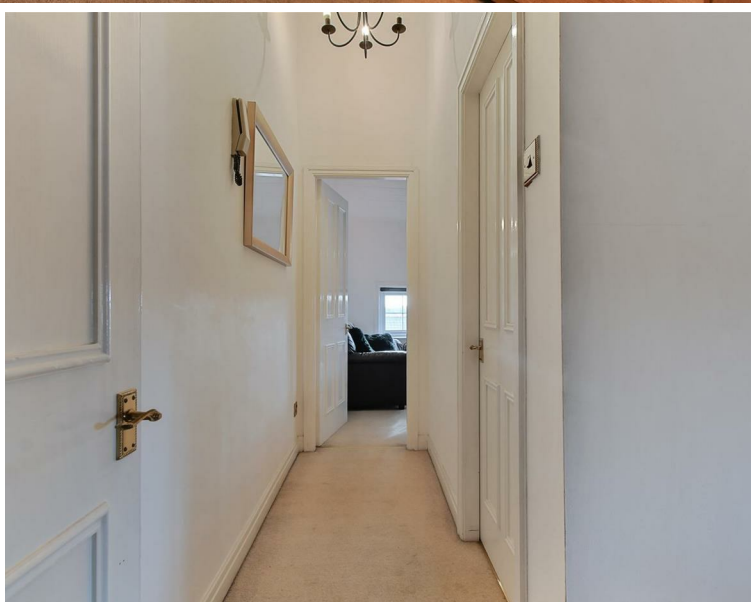
Double sized bedroom with vaulted ceiling, built in cupboard

**Bathroom**

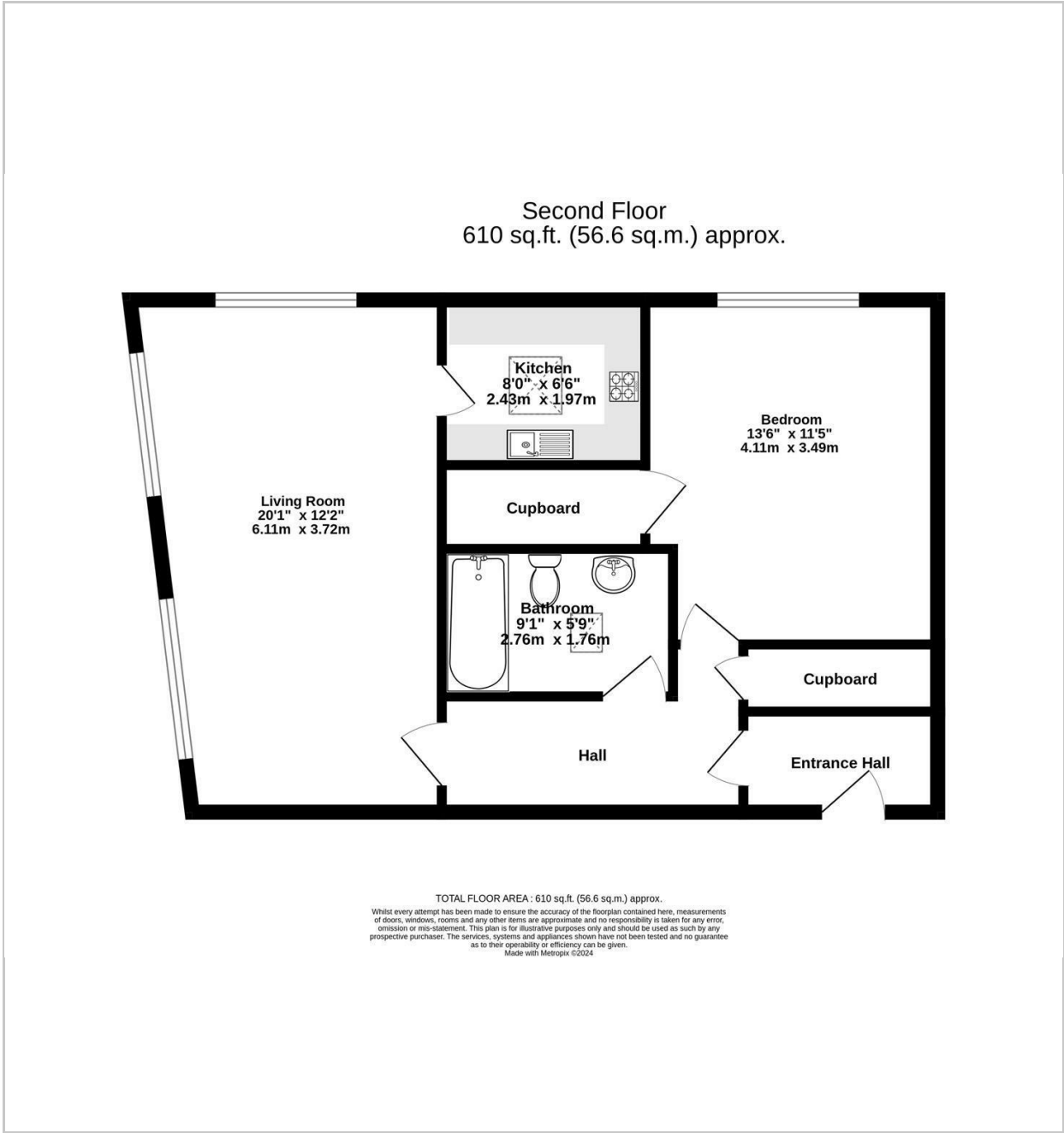
9'0" x 5'9" (2.76m x 1.76m)

Modern suite in white comprising panelled bath with shower above and shower screen, wash hand basin, low level WC





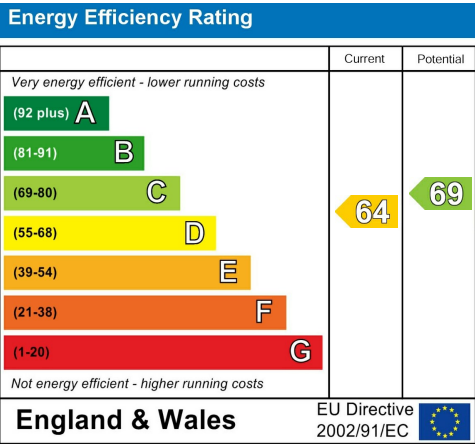
FLOOR PLAN



LOCATION



EPC



These particulars, whilst believed to be accurate are set out as a general outline only for guidance and do not constitute any part of an offer or contract. Intending purchasers should not rely on them as statements of representation of fact, but must satisfy themselves by inspection or otherwise as to their accuracy. No person in this firms employment has the authority to make or give any representation or warranty in respect of the property.