



6 Aldreth Grove

6 Aldreth Grove*
York, YO23 1LB
£535,000

 3  1  2  D

An impressive three bedroom, period terrace with forecourt on this quiet residential street just off Bishopthorpe Road and moments away from Rowntree Park. The property has recently been upgraded to a very good standard throughout to provide superb living accommodation as well as bright and spacious rooms. Within the immediate area of the house is 'Bishy Road' shopping parade, popular schools and amenities as well as a short walk to the railway station and into York's historic city centre. The bright and spacious accommodation fully comprises entrance vestibule with encaustic tiles, entrance hallway, lounge with bay window, dining room, 18' kitchen with double doors out to the courtyard, first floor landing, three double bedrooms, three piece house bathroom and a second floor accessible loft. To the outside is a traditional front forecourt whilst to the rear is a landscaped courtyard. An internal viewing is highly recommended.



Entrance Vestibule

Entrance Hall

Lounge
14'8 x 10'9 (4.47m x 3.28m)

Dining Room
12'1 x 11'3 (3.68m x 3.43m)

Kitchen
18'1 x 8'6 (5.51m x 2.59m)

First Floor Landing

Bedroom 1
14'2 x 12'2 (4.32m x 3.71m)

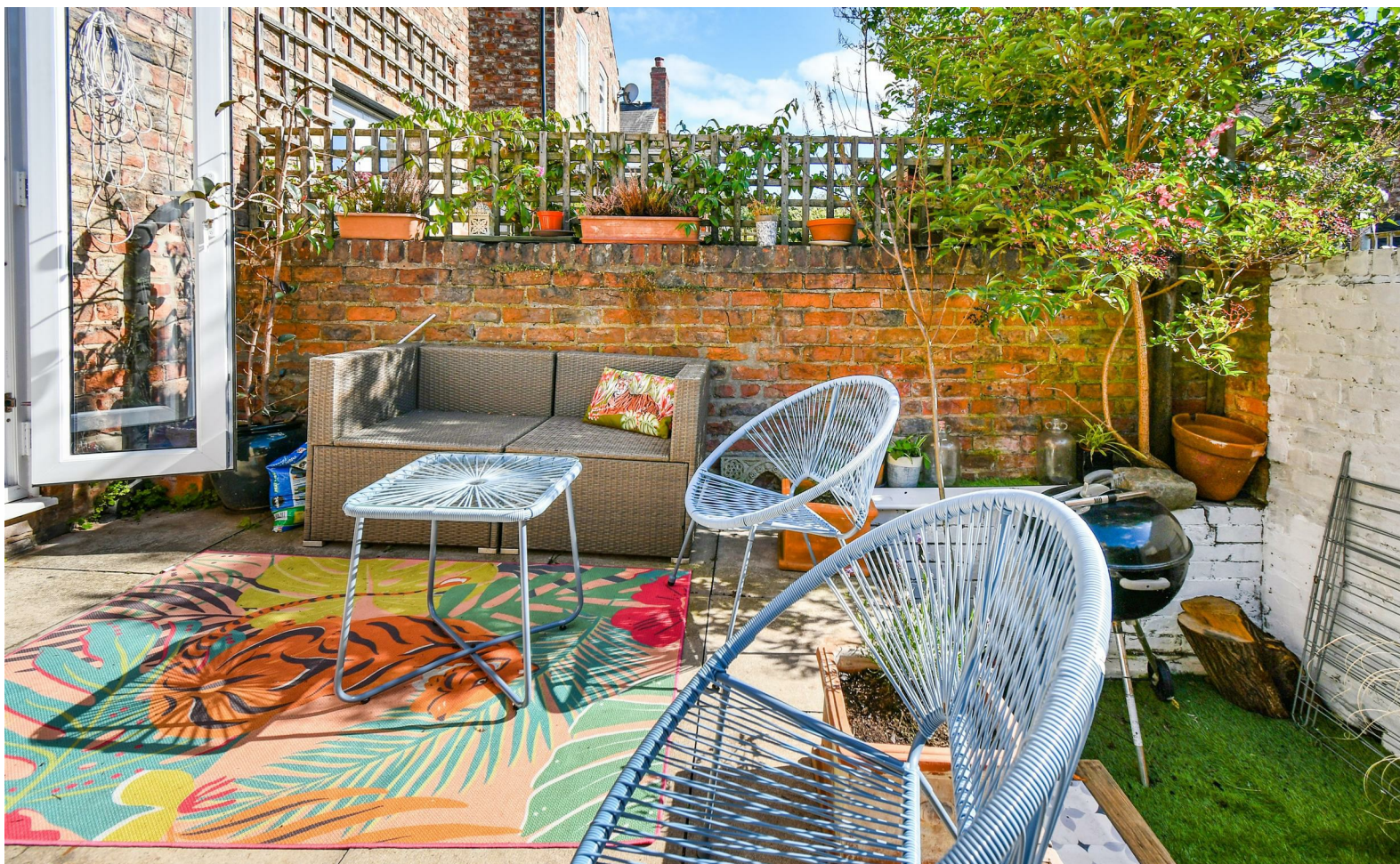
Bedroom 2
12'4 x 8'2 (3.76m x 2.49m)

Bathroom

Bedroom 3
12'7 x 8'6 (3.84m x 2.59m)

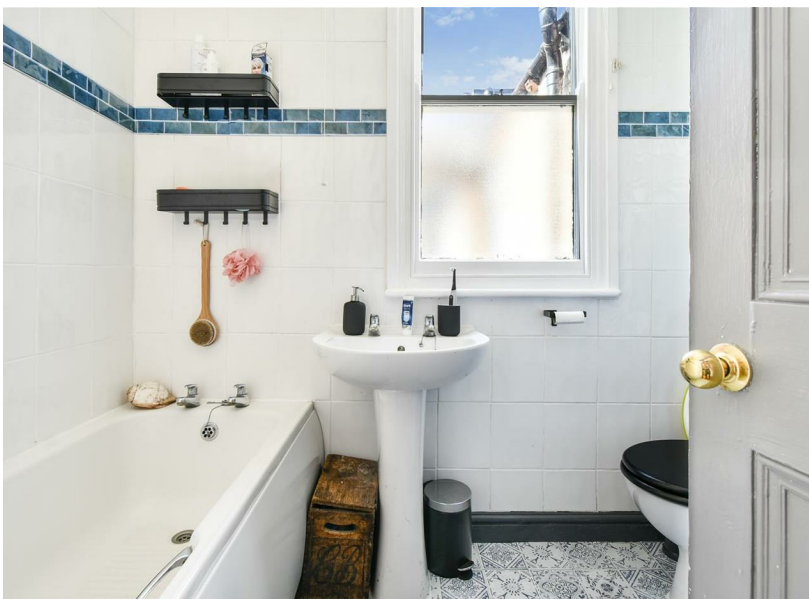
Second Floor Landing



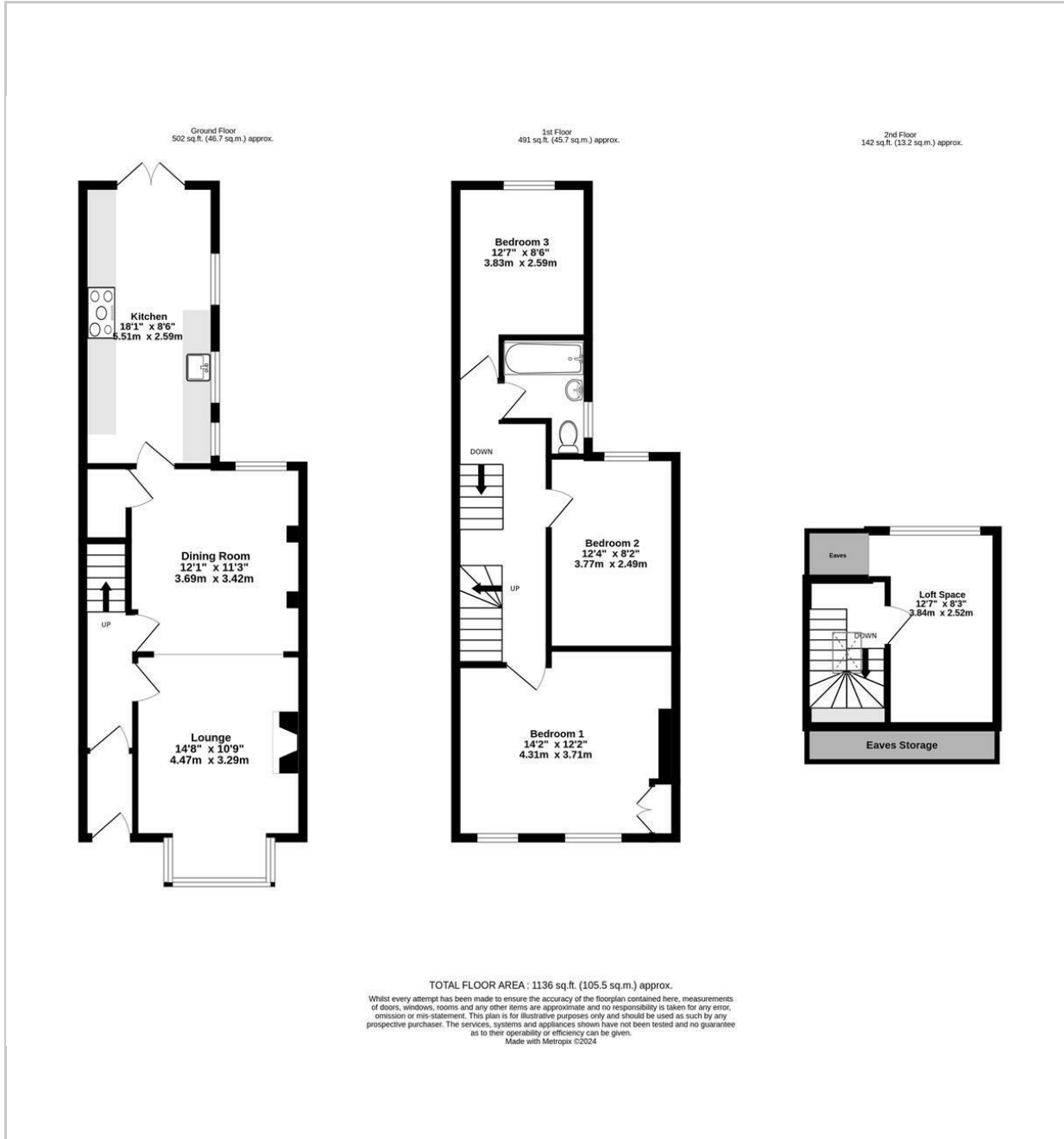


Loft
12'7 x 8'3 (3.84m x 2.51m)

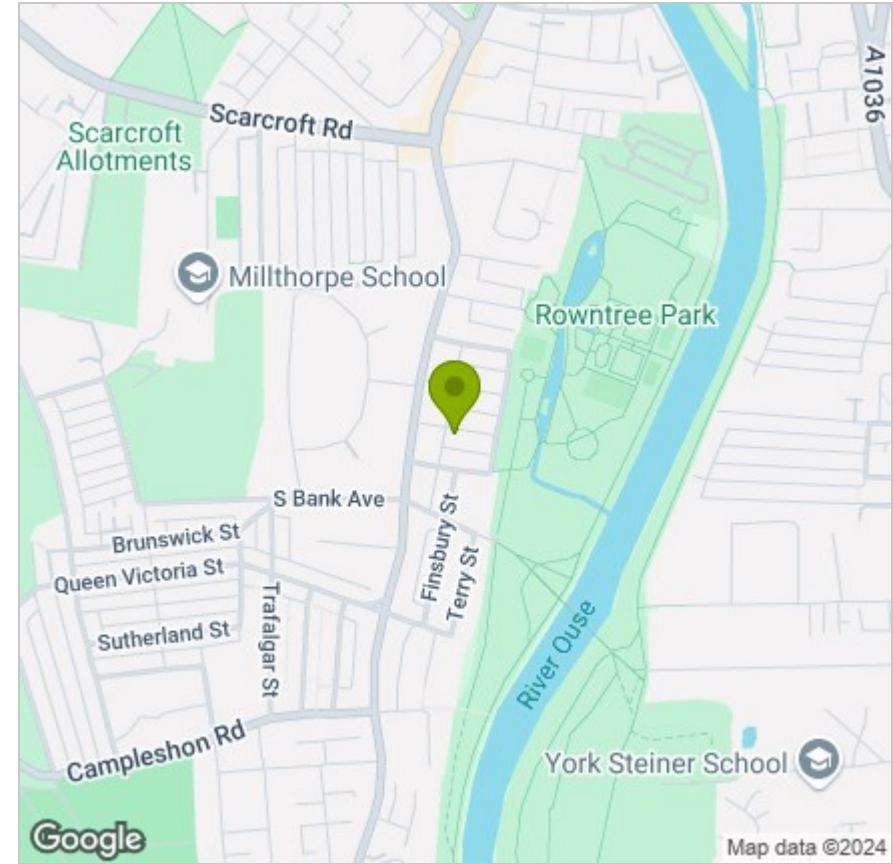
Rear Courtyard



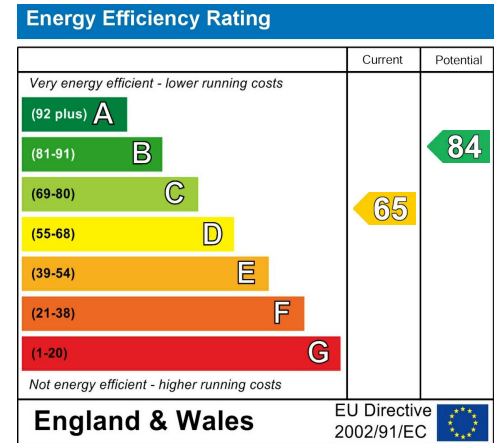
FLOOR PLAN



LOCATION



EPC



These particulars, whilst believed to be accurate are set out as a general outline only for guidance and do not constitute any part of an offer or contract. Intending purchasers should not rely on them as statements of representation of fact, but must satisfy themselves by inspection or otherwise as to their accuracy. No person in this firm's employment has the authority to make or give any representation or warranty in respect of the property.