
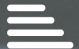




57 Ratcliffe Street
York, YO30 6EN
£230,000

 2  1  2  D

A SPACIOUS BAY FRONTED 2 BEDROOM PERIOD TERRACE HOUSE SET IN THIS SOUGHT AFTER LOCATION WITHIN WALKING DISTANCE OF YORK HOSPITAL AND THE CITY CENTRE. The property which has the benefit of gas central heating and uPVC double glazing comprises entrance hall, lounge opening to dining room, fitted kitchen, galleried landing, 2 bedrooms and first floor bathroom/w.c. Good sized walled rear courtyard.

Entrance Hall

Entrance door, stairs to first floor.

Lounge

13'2" x 9'6" (4.02m x 2.90m)
Bay window to front, opening to

Dining room

12'9" x 9'6" (3.89m x 2.92m)
Window to rear

Kitchen

9'3" x 6'7" (2.84m x 2.01m)
Window to side, fitted units including sink unit, door to rear yard

Landing

Access to loft space

Bedroom 1

12'2" x 10'7" (3.73m x 3.25m)
Window to front

Bedroom 2

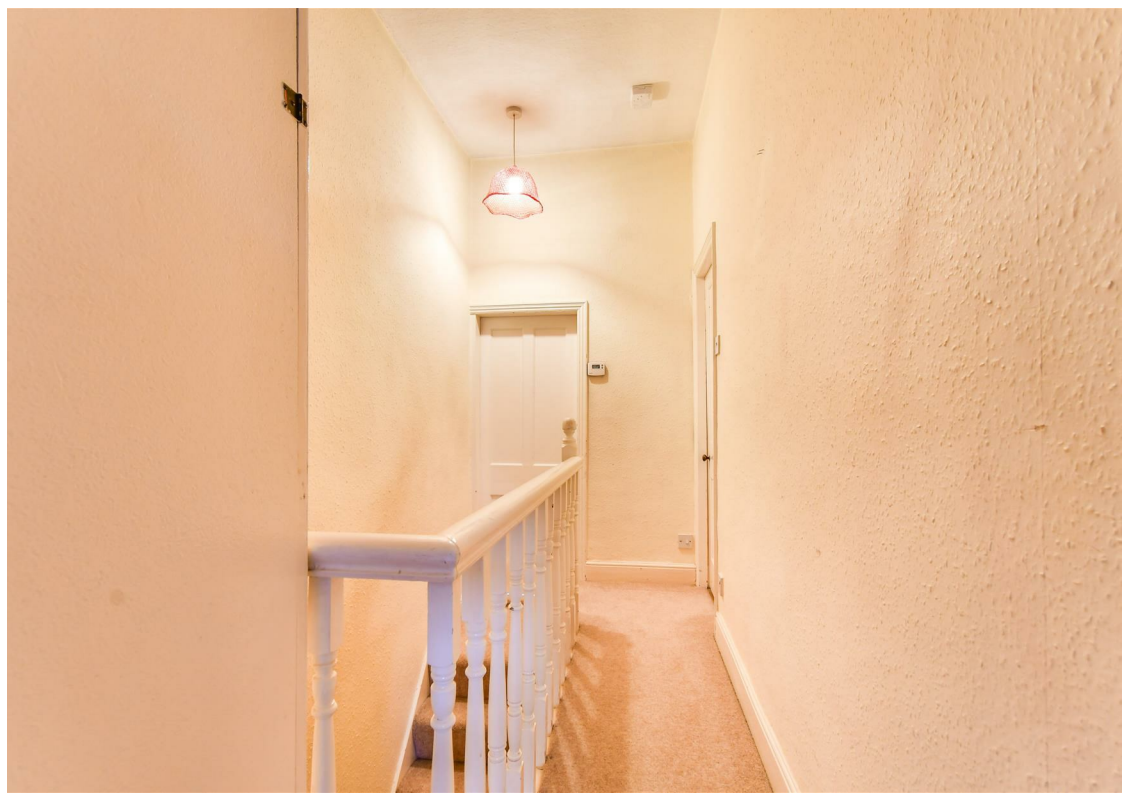
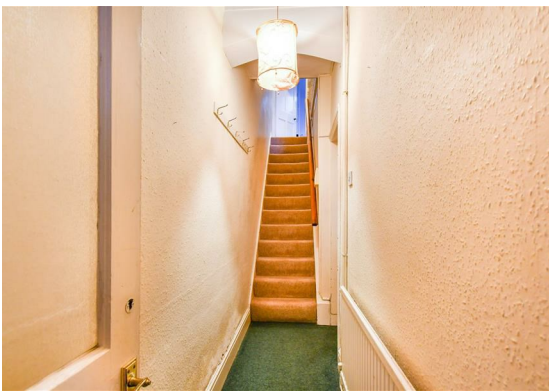
12'0" x 7'4" (3.68m x 2.24m)
Window to rear

Bathroom

9'8" x 7'2" (2.97m x 2.19m)
Three piece suite in white including bath with shower over

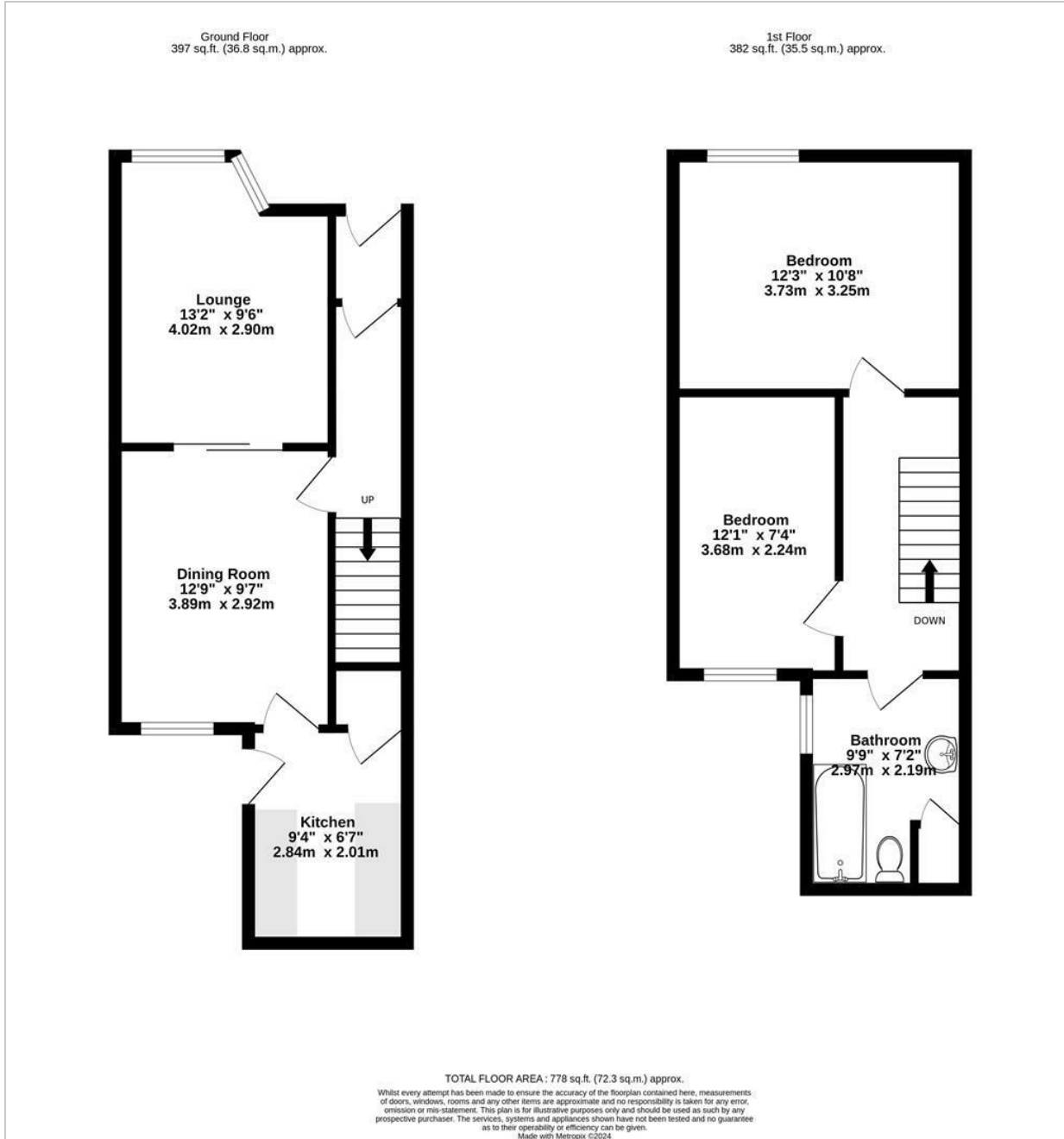
Outside

Rear courtyard with brick stores (one with WC) and gate giving access to rear

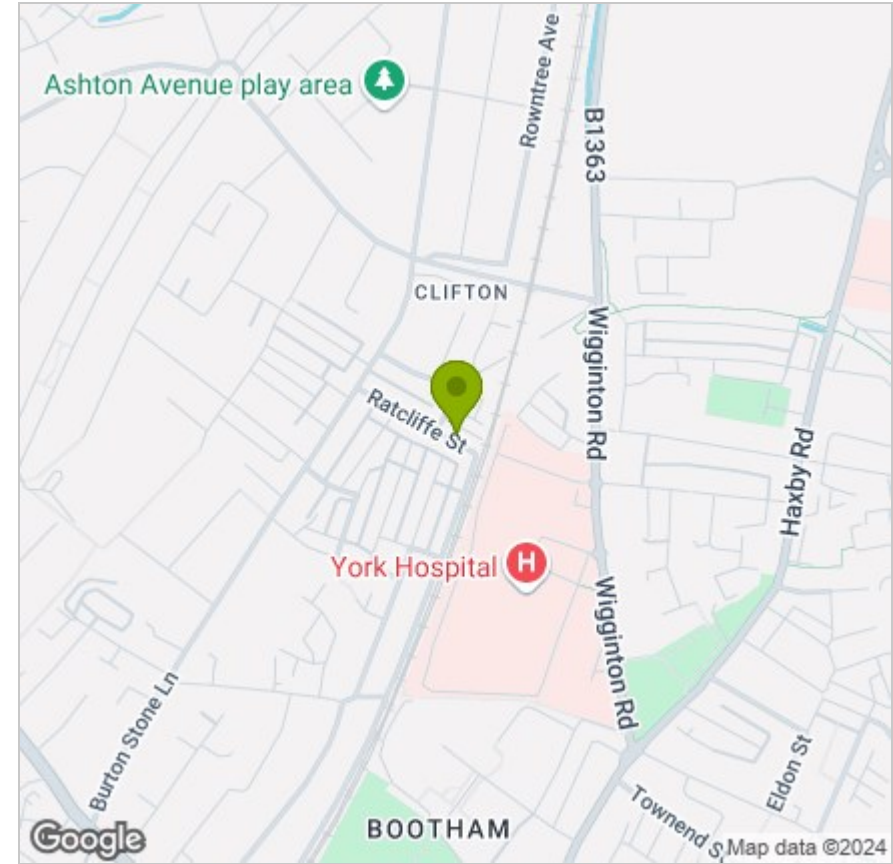




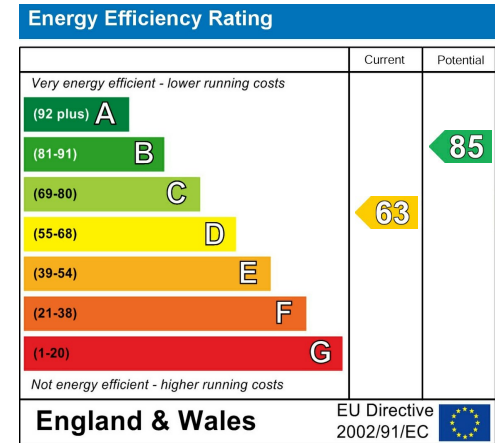
FLOOR PLAN



LOCATION



EPC



These particulars, whilst believed to be accurate are set out as a general outline only for guidance and do not constitute any part of an offer or contract. Intending purchasers should not rely on them as statements of representation of fact, but must satisfy themselves by inspection or otherwise as to their accuracy. No person in this firm's employment has the authority to make or give any representation or warranty in respect of the property.