



The Pavement
York, YO1 9UP
£995 PCM

THIS TOP FLOOR ONE BEDROOM APARTMENT LOCATED IN THE CENTRE OF YORK IS FULL OF CHARACTER, This property comprises open plan living and dining area which leads into a separate kitchen including all white goods. One double bedroom and a shower room.

A VIEWING IS STRONGLY RECOMMENDED TO SEE HOW UNIQUE THIS PROPERTY IS!

This property is let on an unfurnished basis.

Available mid October.

EPC rating E.

Council tax band A.

Sorry no pets.

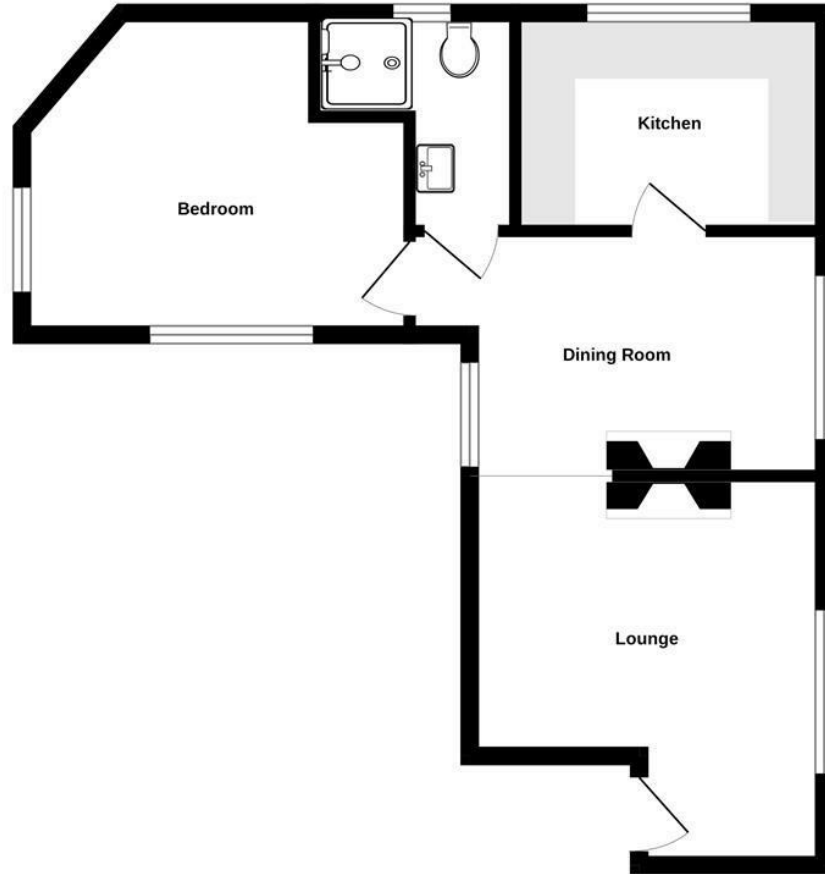
No parking.





FLOOR PLAN

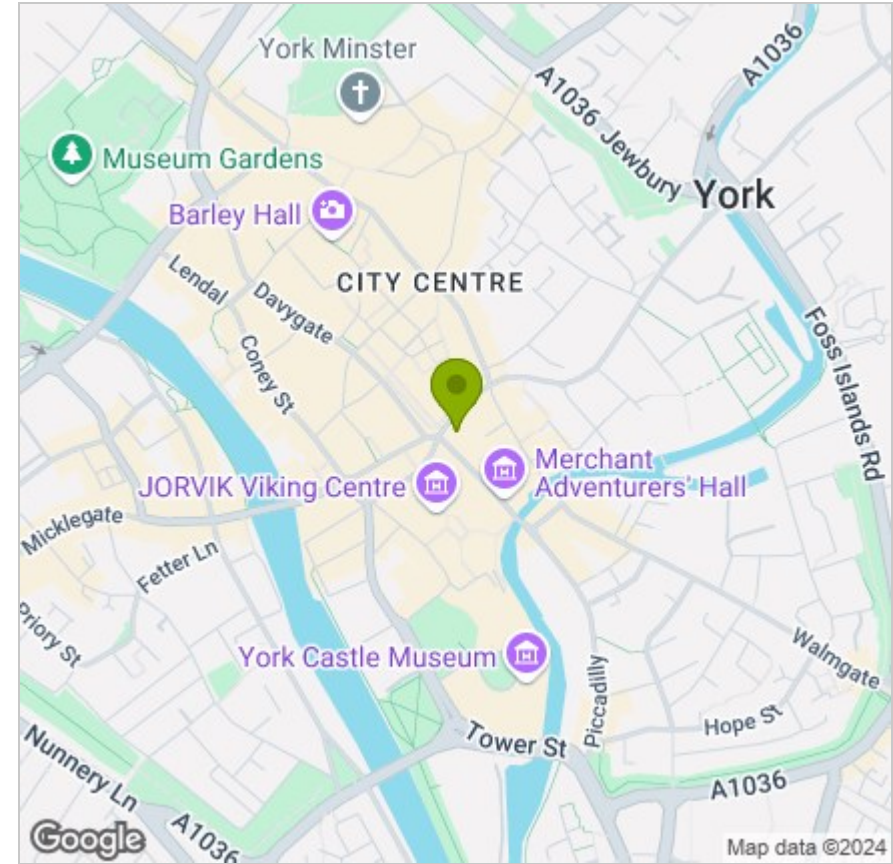
Top Floor
413 sq.ft. (38.3 sq.m.) approx.



TOTAL FLOOR AREA: 413 sq.ft. (38.3 sq.m.) approx.

Whilst every attempt has been made to ensure the accuracy of the floorplan contained here, measurements of doors, windows, rooms and any other items are approximate and no responsibility is taken for any error, omission or mis-statement. This plan is for illustrative purposes only and should be used as such by any prospective purchaser. The services, systems and appliances shown have not been tested and no guarantee as to their operability or efficiency can be given.
Made with Metropix ©2023

LOCATION



EPC

Energy Efficiency Rating

	Current	Potential
Very energy efficient - lower running costs		
(92 plus) A		
(81-91) B		
(69-80) C		
(55-68) D	57	57
(39-54) E		
(21-38) F		
(1-20) G		
Not energy efficient - higher running costs		
England & Wales	EU Directive 2002/91/EC	

These particulars, whilst believed to be accurate are set out as a general outline only for guidance and do not constitute any part of an offer or contract. Intending purchasers should not rely on them as statements of representation of fact, but must satisfy themselves by inspection or otherwise as to their accuracy. No person in this firm's employment has the authority to make or give any representation or warranty in respect of the property.