



50 Chatsworth Grove
Boroughbridge, YO51 9BB
£1,095

 4  1  1  D

****4 BED DORMER BUNGALOW IN BOROUGHBRIDGE AVAILABLE BEGINING OF AUGUST****

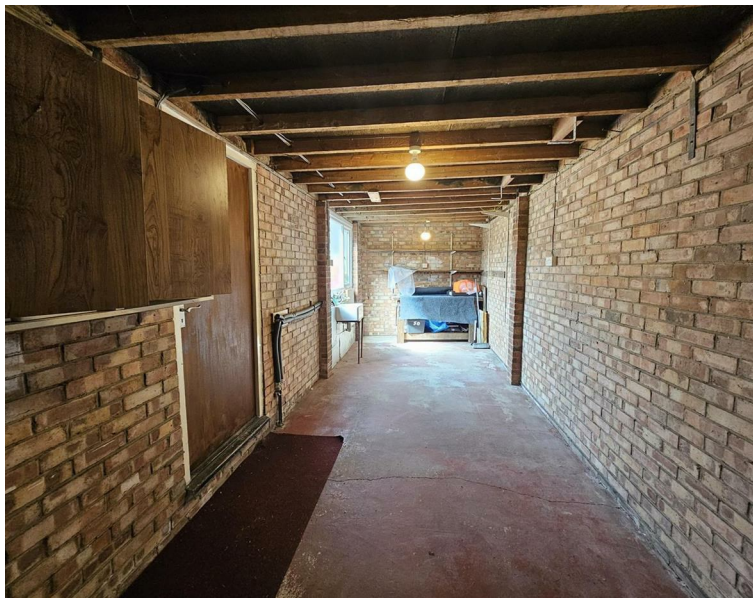
This dormer bungalow is located in the beautiful town of Boroughbridge. This property is within walking distance from the town centre and all amenities including local shops, restaurants while being in a good school district.

As you walk into this property you are greeted by a single bedroom space and the family bathroom with 3 piece suite. As you follow the hallway down you come to a large living room with beautiful large windows. At the end of the hallway you approach the master bedroom with a built in storage and windows that look over the rear garden.

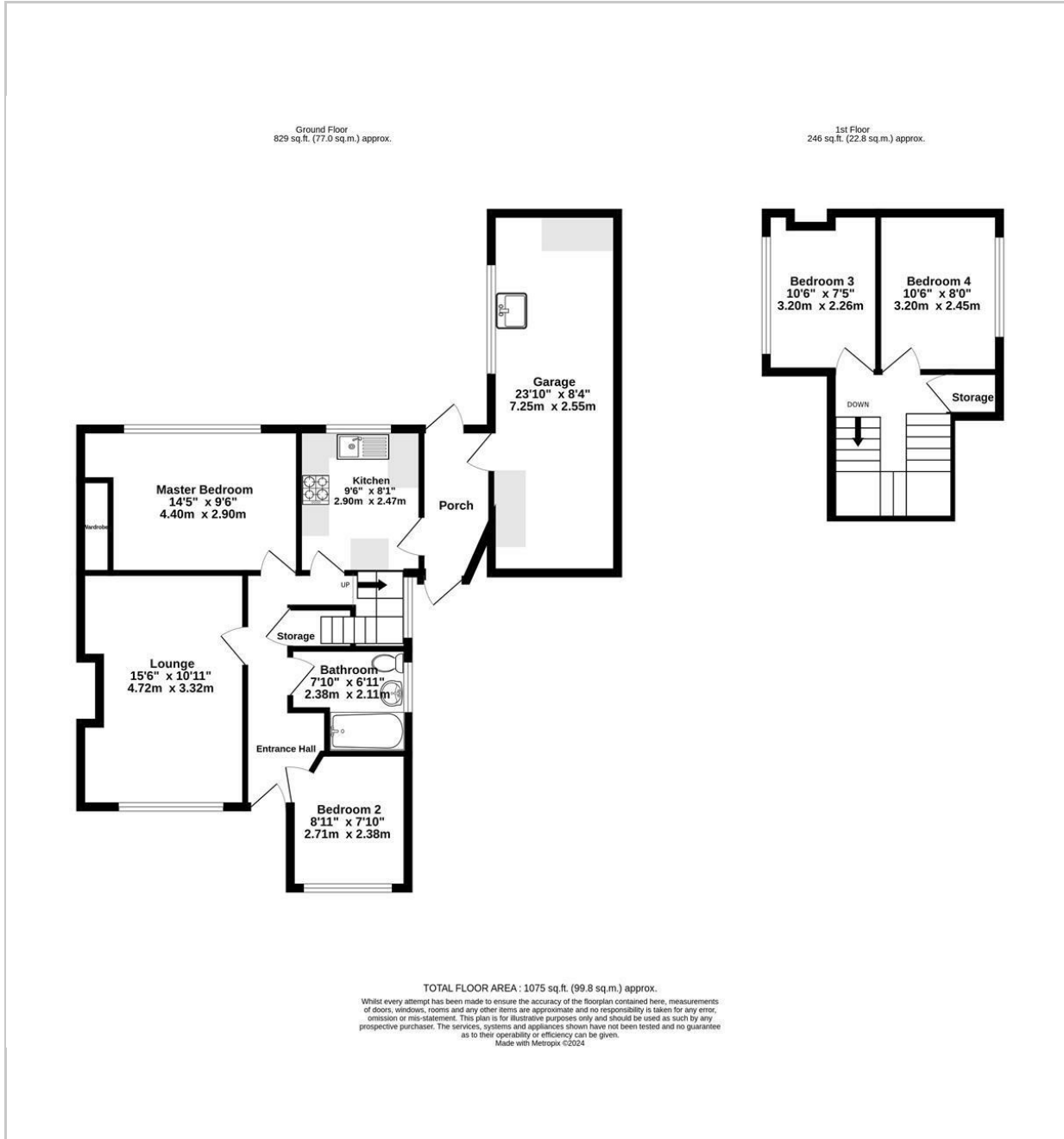
Moving through the property you are greeted by the kitchen which includes oven and hob and has space for a fridge/freezer. To the rear of the property you are met with plenty of external space as well as extra storage in the porch and garage.

Upstairs you will find 2 further double bedrooms with lots of natural light as well as storage space.
Council Tax - D // EPC - D // Not suitable for more than 2 sharers.





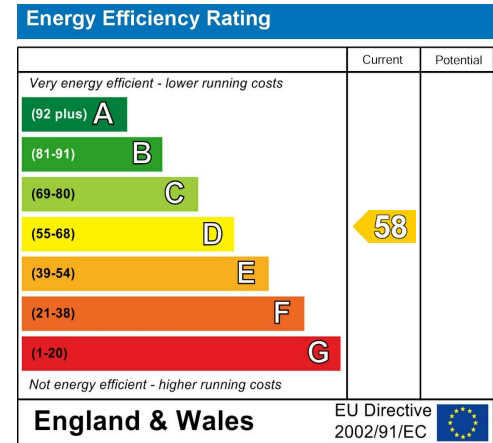
FLOOR PLAN



LOCATION



EPC



These particulars, whilst believed to be accurate are set out as a general outline only for guidance and do not constitute any part of an offer or contract. Intending purchasers should not rely on them as statements of representation of fact, but must satisfy themselves by inspection or otherwise as to their accuracy. No person in this firm's employment has the authority to make or give any representation or warranty in respect of the property.