

Yale



12 Russell Street South Bank
York, YO23 1NW
£1,300 PCM

2 1 2 D

****Two Bed Terraced House in popular location****

A superb two bedroom period mid terrace house located in one of York's most sought after locations. Close to the popular Bishopthorpe Road Shopping Parade and within easy walking distance of the Railway station and City centre

This property comprises of a cosy lounge with separate dining area, kitchen with oven and hob. As you proceed up to the first floor, you are greeted with two bedrooms and three piece bathroom suite fitted with shower and bath.

To the rear of the property is a well maintained courtyard.

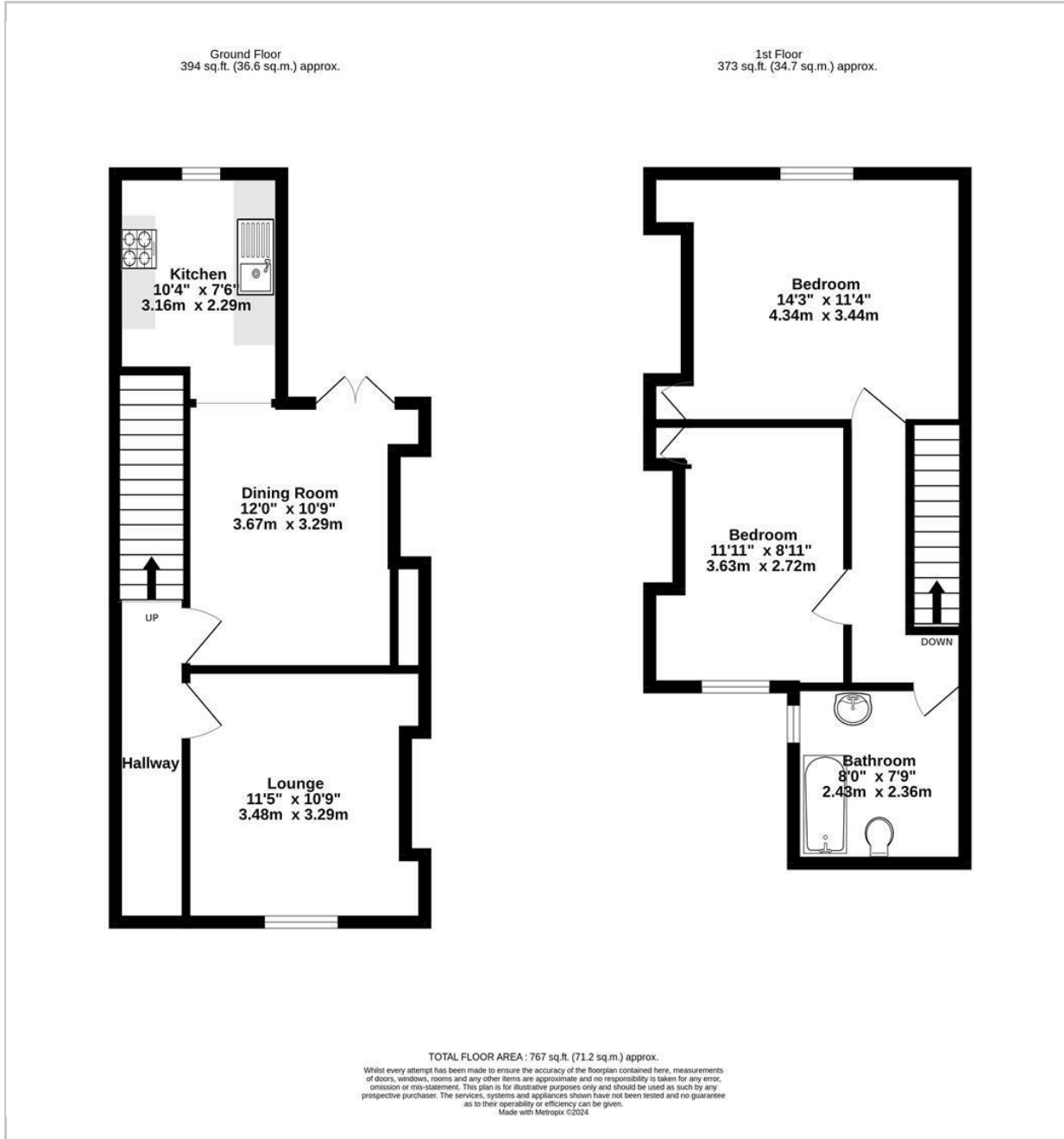
The property Council Tax Band is C.

EPC Rating D

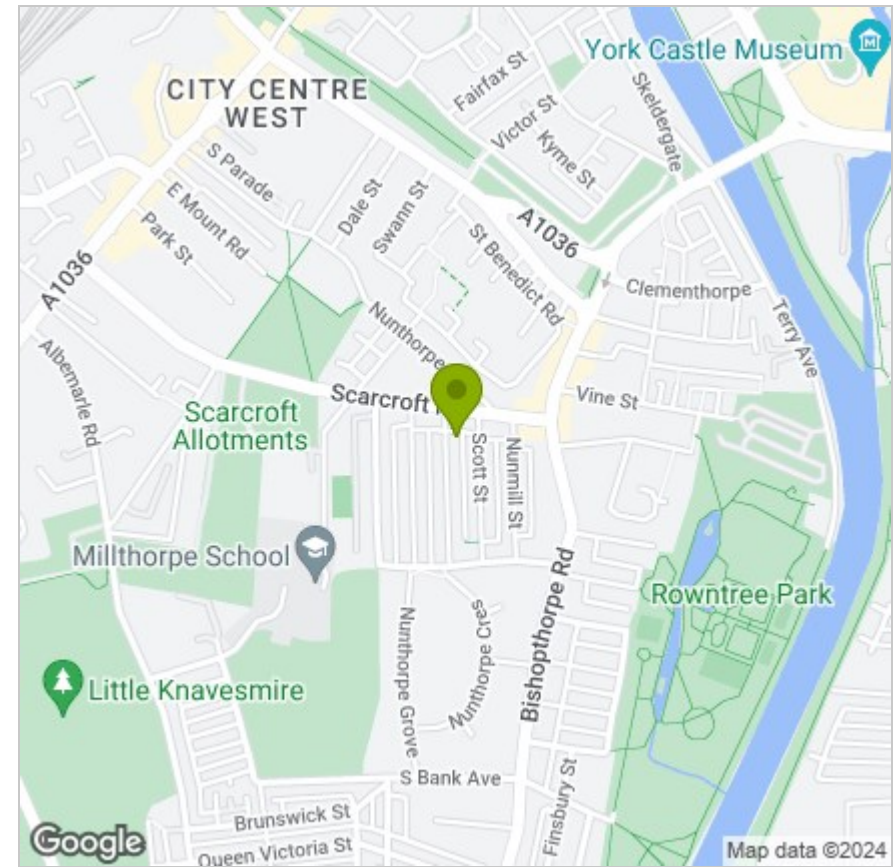




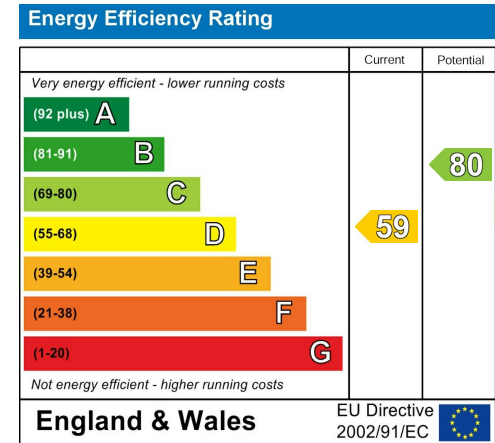
FLOOR PLAN



LOCATION



EPC



These particulars, whilst believed to be accurate are set out as a general outline only for guidance and do not constitute any part of an offer or contract. Intending purchasers should not rely on them as statements of representation of fact, but must satisfy themselves by inspection or otherwise as to their accuracy. No person in this firm's employment has the authority to make or give any representation or warranty in respect of the property.