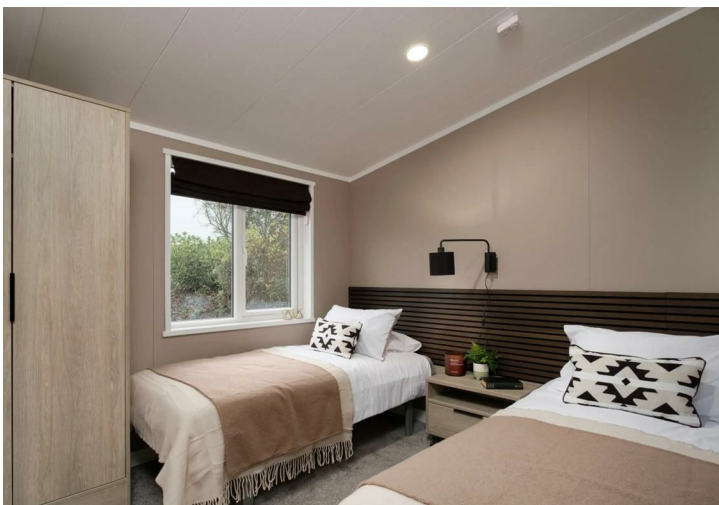




Wilberfoss Holiday Park Hull Road, Wilberfoss, York, YO41 5PF

Guide Price £95,000



Faraday Lodge, Wilberfoss Holiday Park Hull Road, Wilberfoss, York, YO41

^{5PF}
£95,000

IDEAL HOLIDAY LET OR WEEKEND RETREAT! This fabulous 2024 model two bedroom 40 x 20 detached lodge is set on this NEW 52 WEEK LICENCE HOLIDAY PARK. Located near the village of Wilberfoss and conveniently located for York City Centre and the East Yorkshire coast, the property is available FULLY FURNISHED and with 12 months warranty! Positioned on a generous sized plot and in a fabulous position on the site it fully comprises open plan living kitchen with modern units and integrated appliances including wine cooler and fridge freezer, utility, double bedroom with en-suite shower room, second double bedroom and a modern three piece bathroom. To the outside is a sunny decked area. A viewing is highly recommended to appreciate the standard and position of this fabulous lodge! Please call Churchills Estate Agents today. Please note letting opportunities are available.

Description

Utility Area

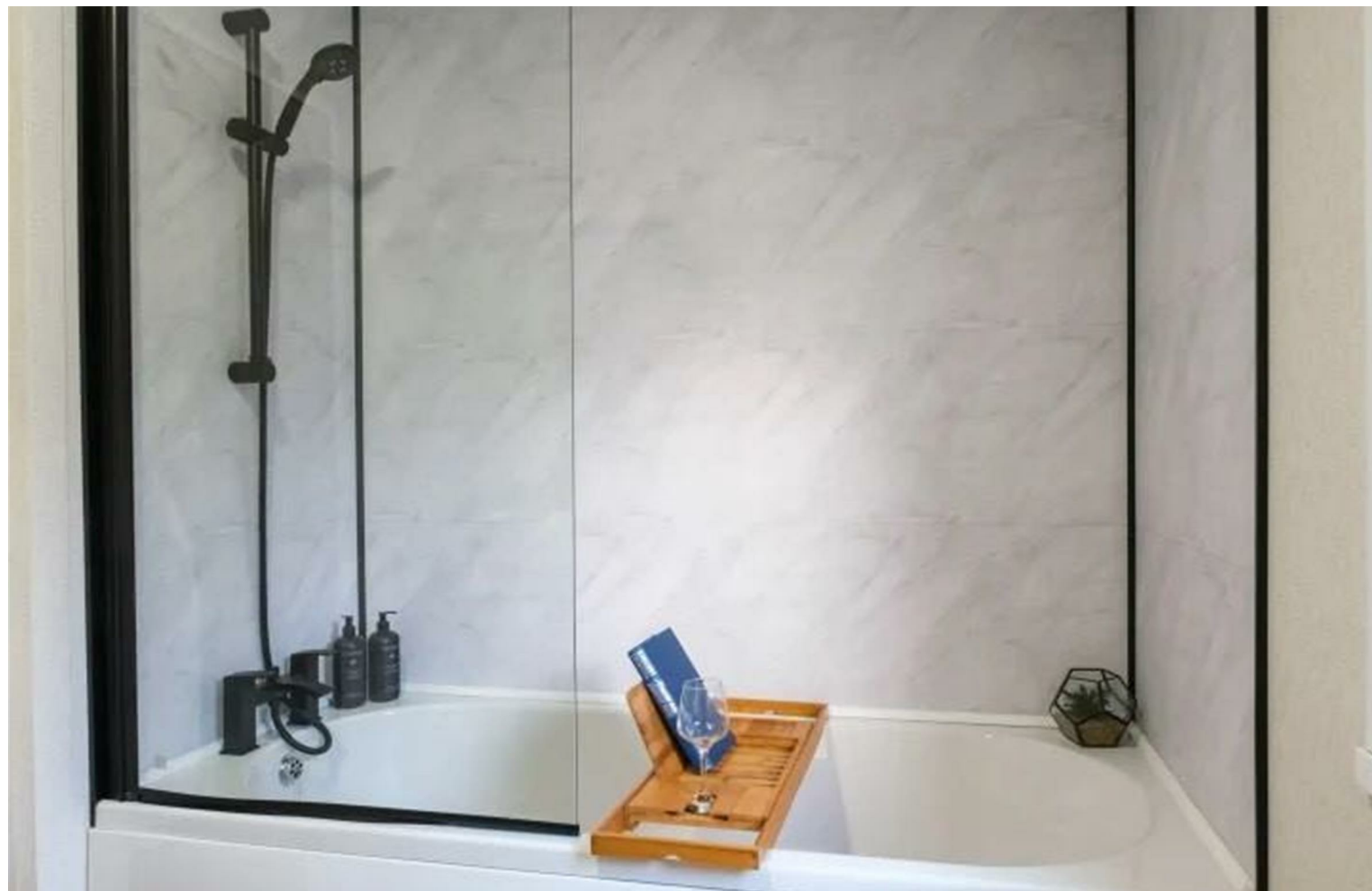
Open Plan Living/Dining Kitchen

Bedroom 1

En-Suite

Bedroom 2

Bathroom



Features

- Ideal Holiday Let Or Weekend Retreat!
- Two Double Bedroom Detached Lodge
- New 52 Week Licence Holiday Park
- Available Fully Furnished
- 12 Year Warranty
- Positioned On A Generous Sized
- Viewing Highly Recommended



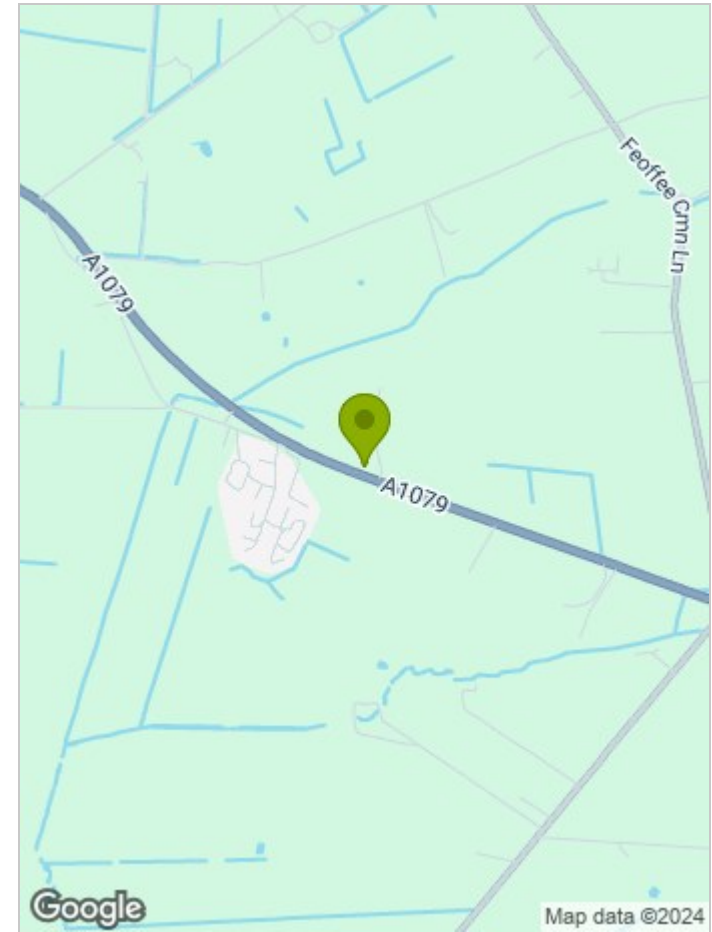
FLOOR PLAN

FLOORPLANS

40' x 20' | 2 Bedroom



LOCATION



EPC

These particulars, whilst believed to be accurate are set out as a general outline only for guidance and do not constitute any part of an offer or contract. Intending purchasers should not rely on them as statements of representation of fact, but must satisfy themselves by inspection or otherwise as to their accuracy. No person in this firm's employment has the authority to make or give any representation or warranty in respect of the property.