

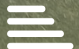




11A Bowling Green Croft York
North Yorkshire, YO31 8FY
£950 PCM

 2  1  1  D

NOW FULL FOR VIEWINGS

****Two Bedroom Townhouse****

This two bedroom townhouse in a popular location just off Haxby Road is within walking distance of the City Centre, Nestle and the Hospital.

The property comprises of Entrance Vestibule which leads on to an open plan lounge and dining area, leading onto a modern kitchen. As you proceed up the stairs you will find two double bedrooms and a three piece bathroom suite. There is also a garden to the rear of the property. The flooring in multiple rooms are being replaced prior to viewings at the property.

There is 1 allocated parking space in front of the property.

To be let on an unfurnished basis.

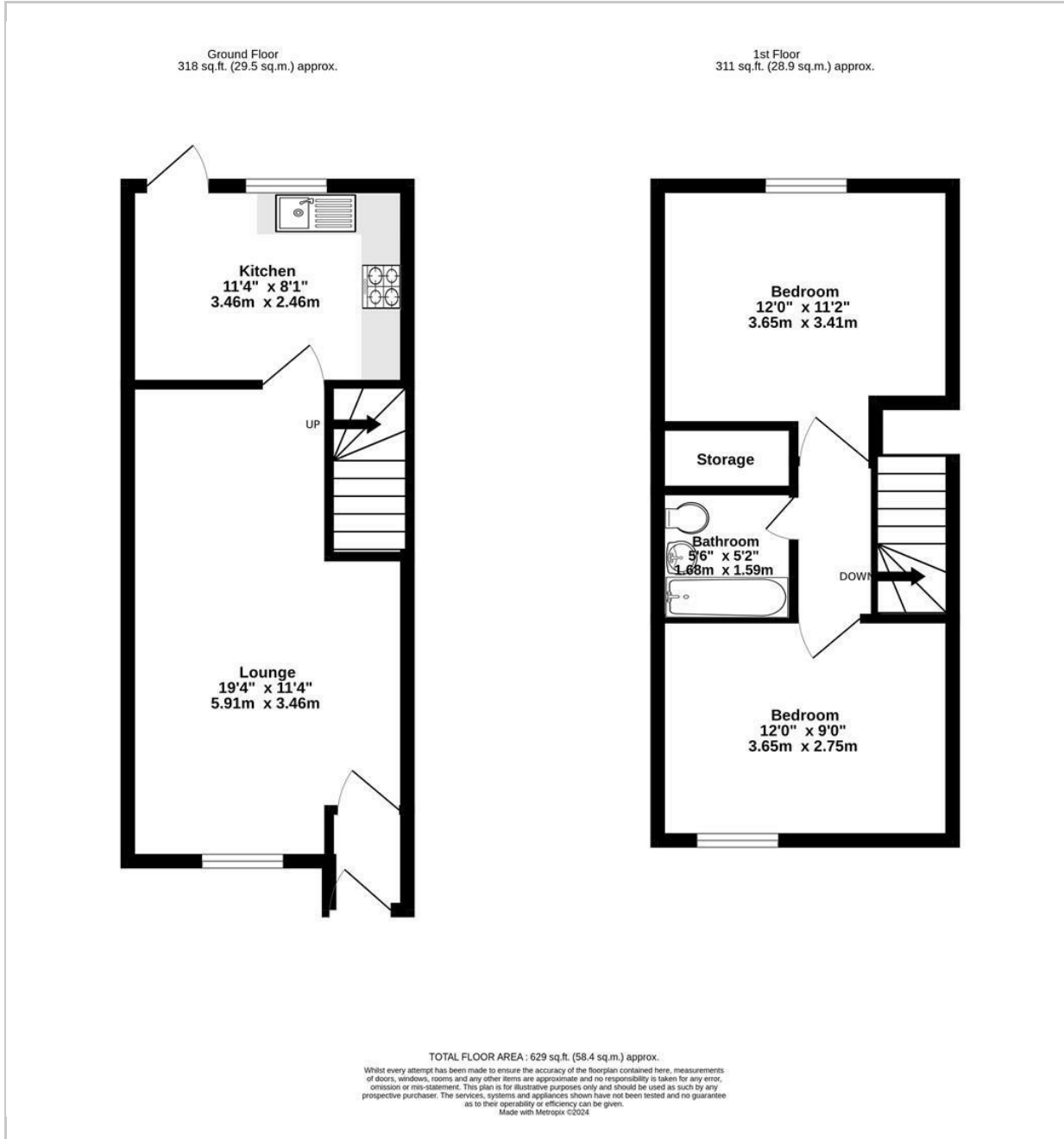
Council Tax Band B

EPC Rating D

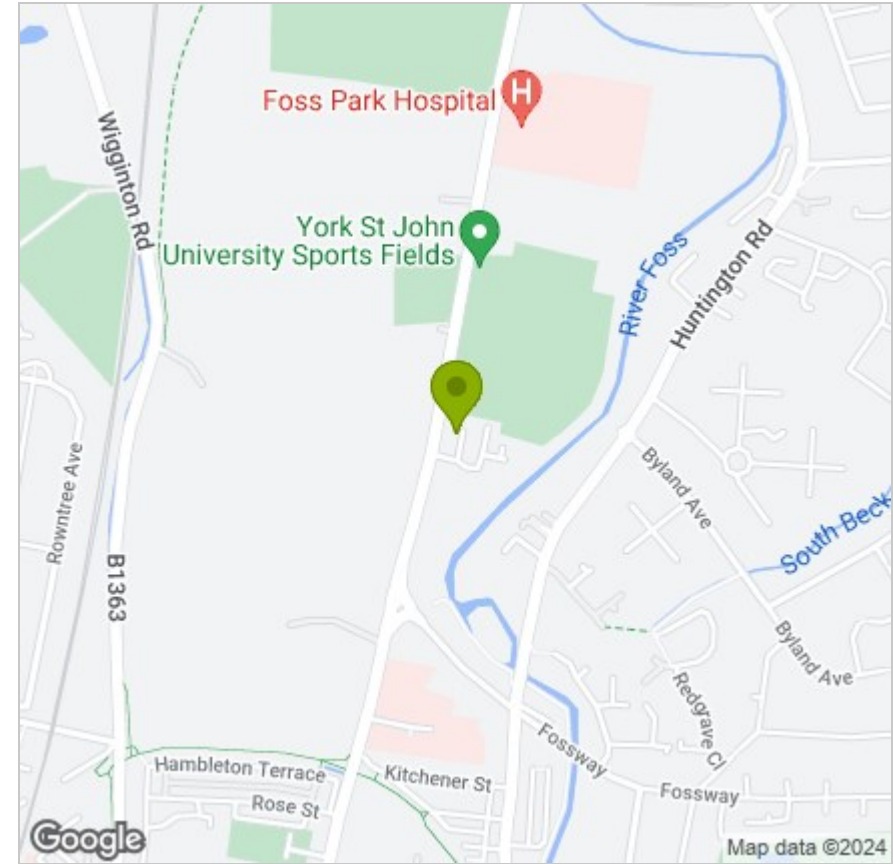
Available Now!



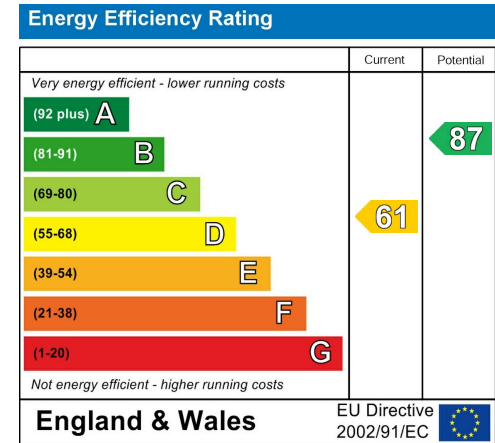
FLOOR PLAN



LOCATION



EPC



These particulars, whilst believed to be accurate are set out as a general outline only for guidance and do not constitute any part of an offer or contract. Intending purchasers should not rely on them as statements of representation of fact, but must satisfy themselves by inspection or otherwise as to their accuracy. No person in this firm's employment has the authority to make or give any representation or warranty in respect of the property.