

2 Driffield Terrace

York, YO24 1EJ

Guide Price £475,000



A beautiful two bedroom apartment forming part of this grand period town house located on The Mount which is one of York's most sought after locations. Benefitting from the use of a lovely garden and within a few minutes walk of the city centre and railway station, the entrance to the property is via Driffield Terrace and leads into an ornate hallway with sweeping period staircase to the upper floors. The apartment is located on the second floor and provides bright living accommodation offering a real sense of space with the high ceilings. With an entrance hall, large lounge/dining room with feature marble period fireplace, fully fitted breakfast kitchen, utility/WC, fabulous large master bedroom and generous sized second bedroom both of which have had their windows restored to the original condition and a quality fitted bathroom with a newly installed shower cubicle. As well as retaining many period features the grandeur of this apartment is further enhanced by Thomas Sanderson shutters, cornicing's and refurbished sash windows. This is a superb opportunity to be the home or holiday home of envy.



Hallway

Doors leading to;

Lounge/Dining Room

An impressive reception room with two sash windows to the front overlooking The Mount, further window to rear, ceiling cornicing, fabulous large period fireplace with marble surround and cast iron insert housing living flame gas fire. Hardwood flooring. Door leading to;



Breakfast Kitchen

Quality fitted units comprising base, wall and larder units with solid wood work surfaces and Belfast sink, integrated appliances including double oven, hob, microwave, dishwasher and fridge/freezer.



Utility/WC

Work surfaces and plumbing for washing machine, low level WC.





Bedroom 1

A stunning large master bedroom with cornicing and ceiling rose, 2 sash windows to rear with fitted shutters, original fireplace and built-in wardrobes to alcoves.

Bedroom 2

A generous sized double bedroom with sash window to rear with fitted shutters and original period fireplace.

Bathroom

High quality bathroom suite with feature freestanding bath and mixer shower, corner shower, wash hand basin, WC and window to side

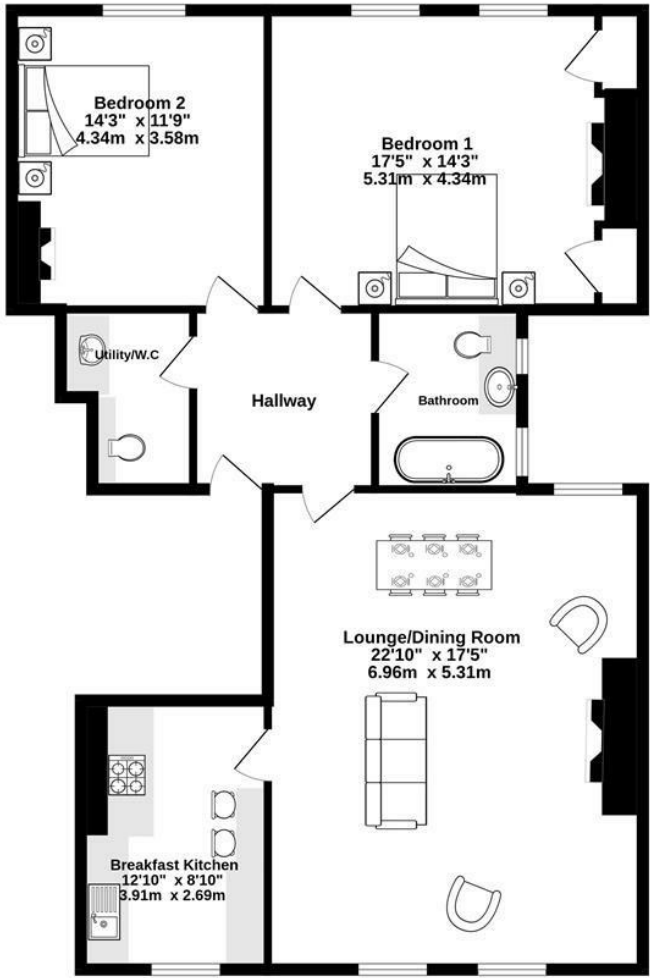
Note:

The freehold has been purchased by the apartment block owners and therefore no ground rent applies.



FLOOR PLAN

Ground Floor
1088 sq.ft. (101.1 sq.m.) approx.

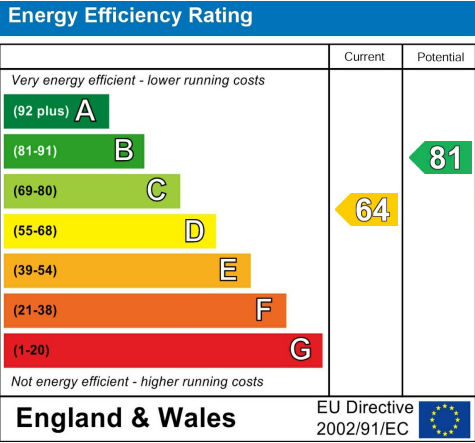


TOTAL FLOOR AREA: 1088 sq.ft. (101.1 sq.m.) approx.
Whilst every attempt has been made to ensure the accuracy of the floorplan contained here, measurements of doors, windows, rooms and any other items are approximate and no responsibility is taken for any error, omission or mis-statement. This plan is for illustrative purposes only and should be used as such by any prospective purchaser. The services, systems and appliances shown have not been tested and no guarantee as to their operability or efficiency can be given.
Made with Metropix ©2024

LOCATION



EPC



These particulars, whilst believed to be accurate are set out as a general outline only for guidance and do not constitute any part of an offer or contract. Intending purchasers should not rely on them as statements of representation of fact, but must satisfy themselves by inspection or otherwise as to their accuracy. No person in this firms employment has the authority to make or give any representation or warranty in respect of the property.