




Escrick House Fulford Place Hospital Fields Road

York, YO10 4FE

£215,000

 2  2  1  c

A LARGE 2 BEDROOM SECOND FLOOR APARTMENT SET IN THIS SOUGHT AFTER LOCATION WITHIN WALKING DISTANCE FROM THE CITY CENTRE. The property provides bright and spacious living accommodation which is entered via a secure communal hallway and comprises entrance hall, large open plan living room with sitting/dining area and fully fitted kitchen, 2 double bedrooms (one with en-suite shower room) plus a family bathroom. To the outside is an allocated car parking space. An internal viewing of this spacious apartment is strongly recommended.

Entrance Hall

Living Kitchen

19'7" x 16'10" (5.97m x 5.13m)

Bedroom 1

18'8" x 13'3" (5.70m x 4.05m)

En-suite

Bedroom 2

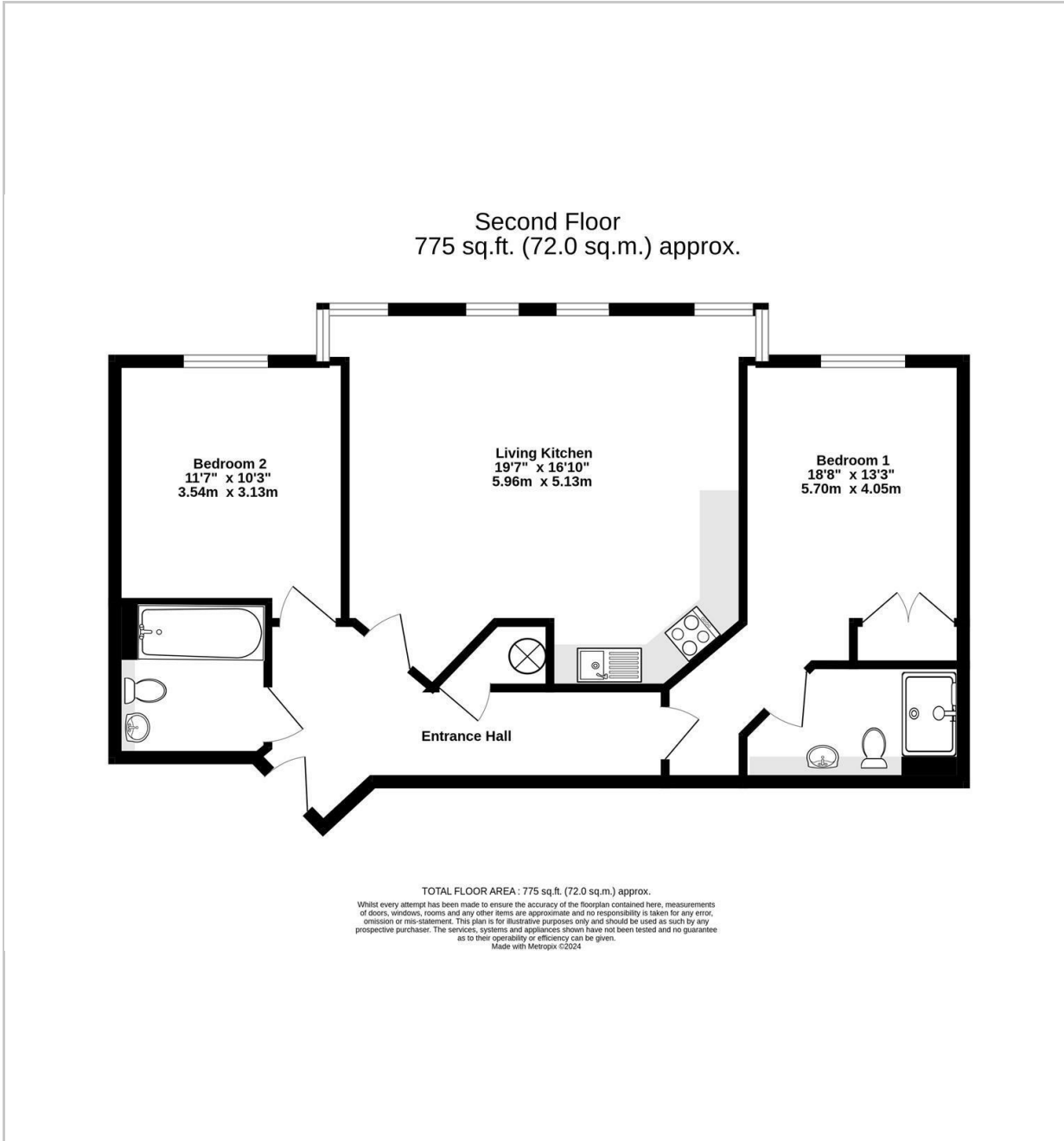
11'7" x 10'3" (3.54m x 3.13m)

Bathroom

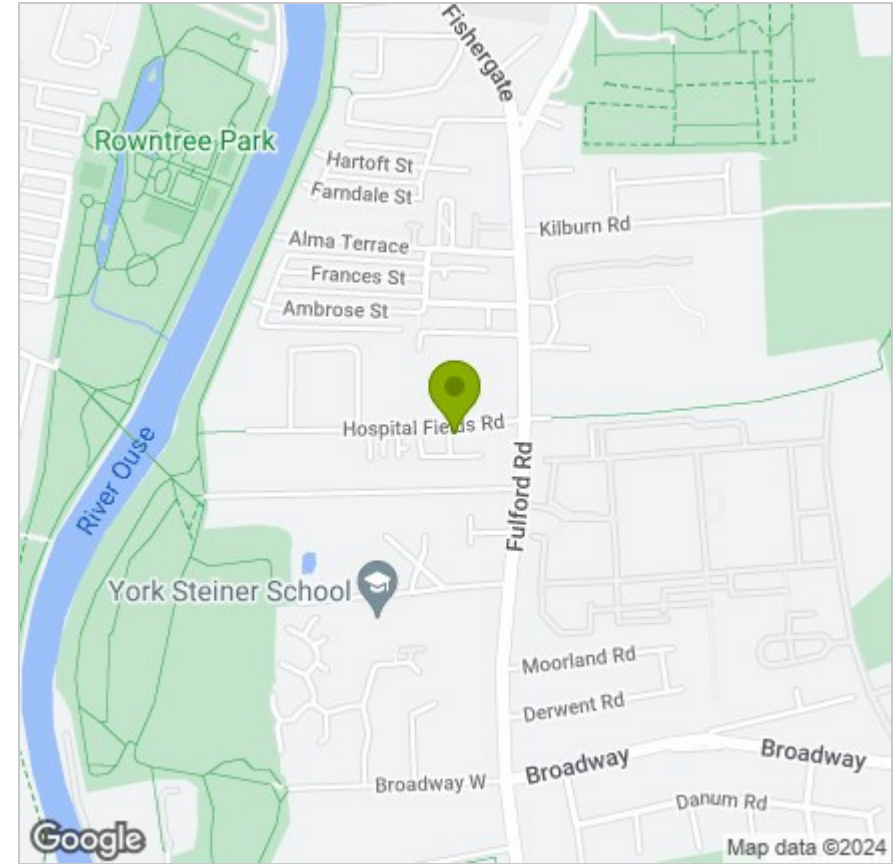




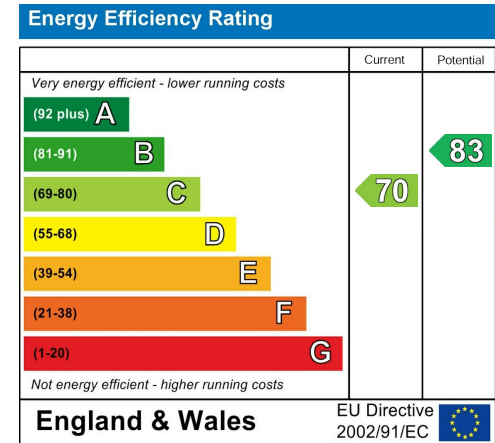
FLOOR PLAN



LOCATION



EPC



These particulars, whilst believed to be accurate are set out as a general outline only for guidance and do not constitute any part of an offer or contract. Intending purchasers should not rely on them as statements of representation of fact, but must satisfy themselves by inspection or otherwise as to their accuracy. No person in this firm's employment has the authority to make or give any representation or warranty in respect of the property.