



Fountain Cottage, 35 Main Street Escrick
York, YO19 6LQ

Guide Price £350,000



A fabulous 2/3 bedroom period cottage, with a stunning large garden at the rear and parking for two cars. Fountain Cottage is situated in the highly sort after village of Escrick, within the Fulford school catchment area and easy access into York and the A64. The property provides spacious living accommodation with many attractive original features comprising large living room with a wood burner and oak flooring. The 22' dining kitchen has quality fitted units, built-in appliances and under floor heating leading to a study/bedroom 3, utility and WC. First floor comprises landing, two double bedrooms and newly built bathroom with under floor heating and heated towel rail. Outside, a courtyard leads to a beautiful large garden with brick-built outbuildings and parking for two vehicles. An internal viewing is highly recommended.

Sitting Room

Kitchen/Diner

Utility Room

Study/Bedroom 3

WC

Master Bedroom

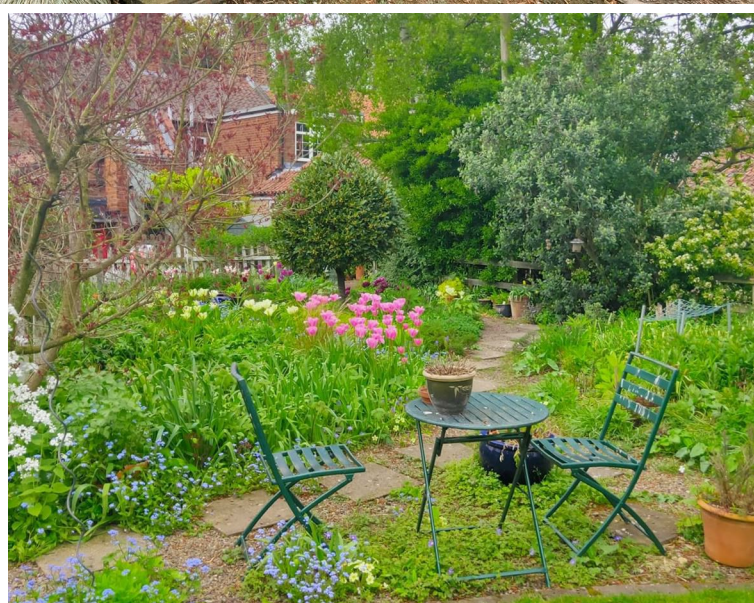
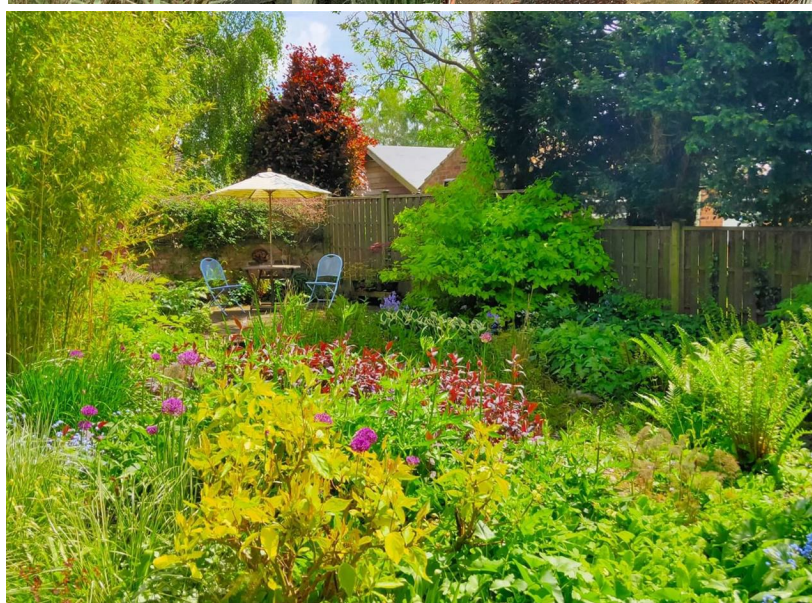
Bedroom 2

Bathroom

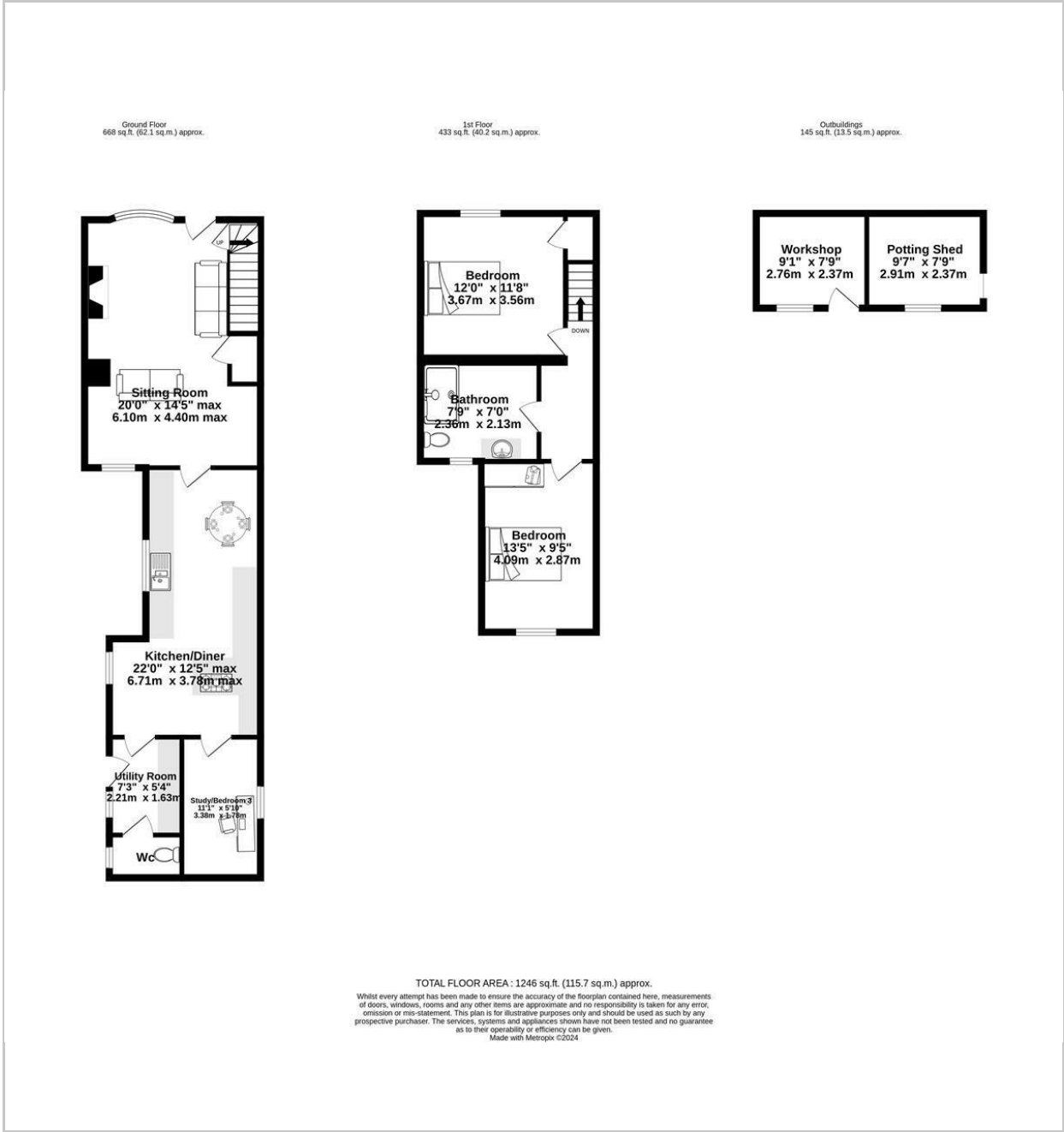
Outside

Including Workshop and Potting Shed

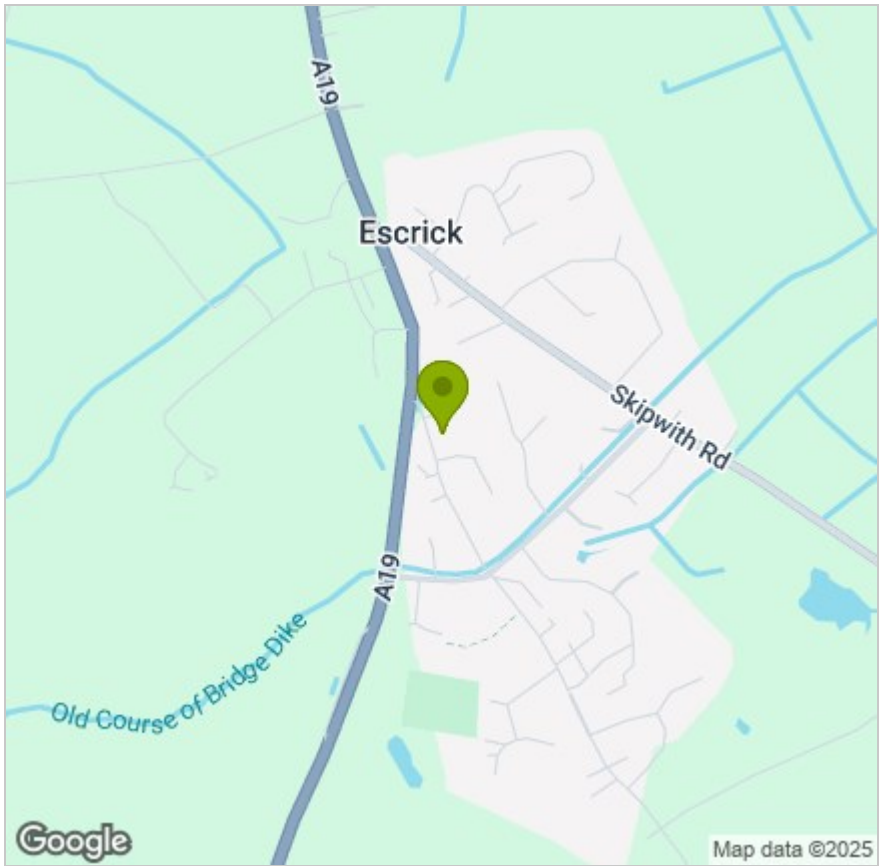




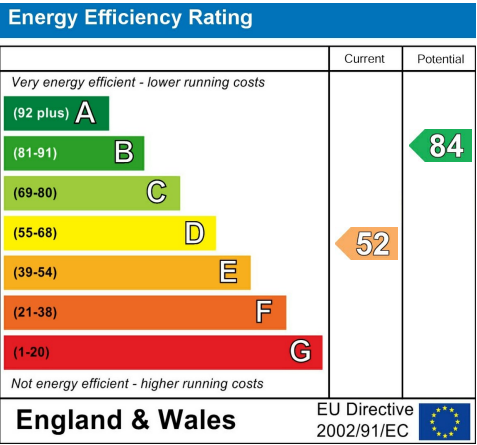
FLOOR PLAN



LOCATION



EPC



These particulars, whilst believed to be accurate are set out as a general outline only for guidance and do not constitute any part of an offer or contract. Intending purchasers should not rely on them as statements of representation of fact, but must satisfy themselves by inspection or otherwise as to their accuracy. No person in this firms employment has the authority to make or give any representation or warranty in respect of the property.