



26 Leetham House Hungate
York, YO1 7PB
£925 PCM

 1  1  1  c

Fabulous first floor one bedroom apartment within this executive city centre development. Communal hallway with secure entry phone system and lifts to upper floors.

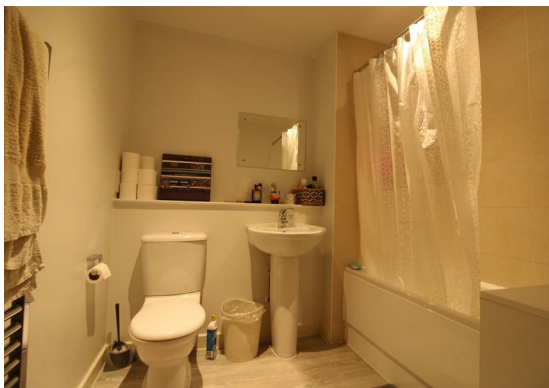
The property comprises entrance hall, large open plan living kitchen with balcony, large bedroom and bathroom. Attractive communal gardens.

Sorry No Pets.

Available NOW

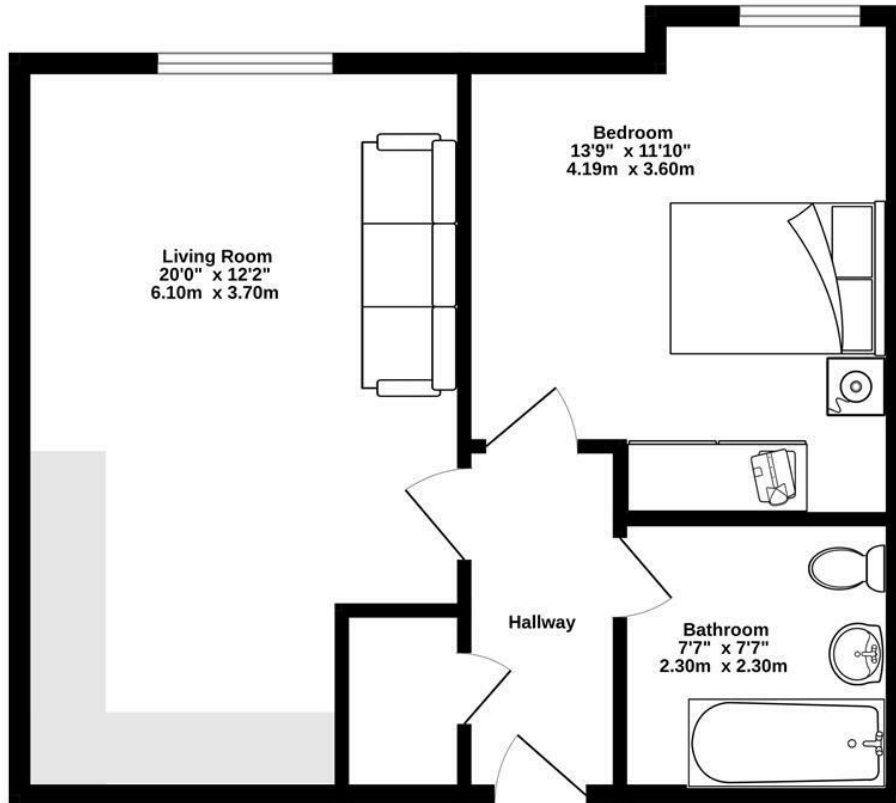
EPC Rating C

Council Tax Band B



FLOOR PLAN

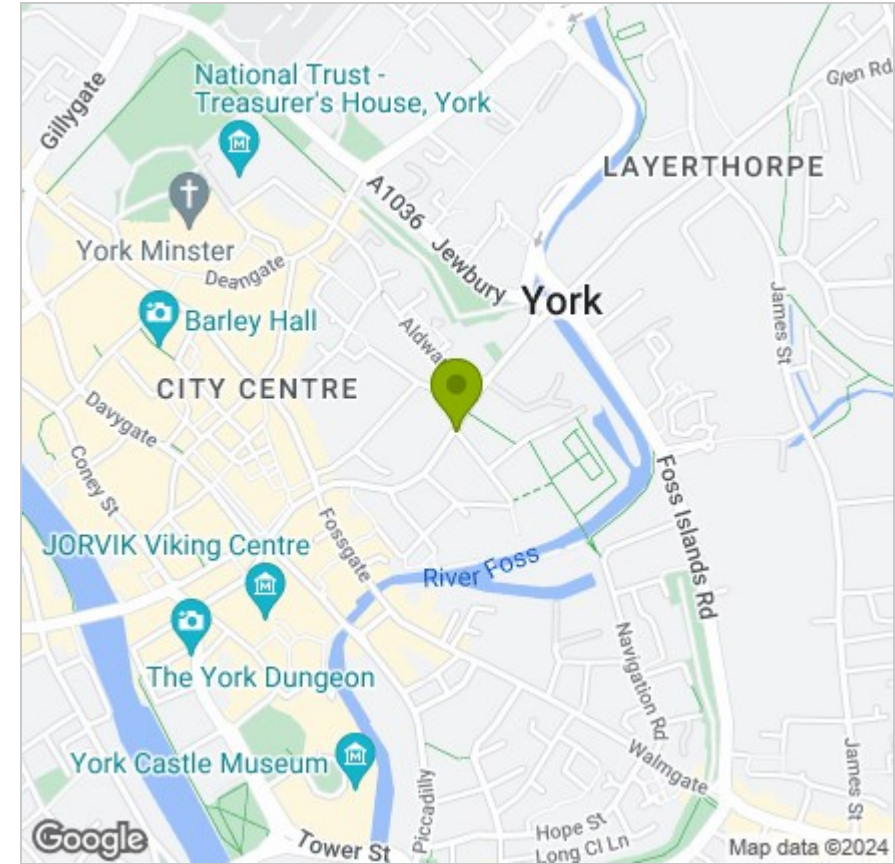
Ground Floor
488 sq.ft. (45.3 sq.m.) approx.



TOTAL FLOOR AREA : 488 sq.ft. (45.3 sq.m.) approx.

Whilst every attempt has been made to ensure the accuracy of the floorplan contained here, measurements of doors, windows, rooms and any other items are approximate and no responsibility is taken for any error, omission or mis-statement. This plan is for illustrative purposes only and should be used as such by any prospective purchaser. The services, systems and appliances shown have not been tested and no guarantee as to their operability or efficiency can be given.
Made with Metropix ©2024

LOCATION



Energy Efficiency Rating

EPC

	Current	Potential
Very energy efficient - lower running costs		
(92 plus) A		
(81-91) B	78	78
(69-80) C		
(55-68) D		
(39-54) E		
(21-38) F		
(1-20) G		
Not energy efficient - higher running costs		
England & Wales	EU Directive 2002/91/EC	

These particulars, whilst believed to be accurate are set out as a general outline only for guidance and do not constitute any part of an offer or contract. Intending purchasers should not rely on them as statements of representation of fact, but must satisfy themselves by inspection or otherwise as to their accuracy. No person in this firm's employment has the authority to make or give any representation or warranty in respect of the property.

Anglia House, 3a Bishopthorpe Road, York, YO23 1NA

Tel: 01904 646611 Email: info@churchillsyork.com www.churchillsestateagents.co.uk