






Royal Westmoreland Drive Allerthorpe Golf & Country Park Allerthorpe
YO42 4RL

Guide Price £89,950

 2  2  1 

SITE FEES PAID TO 2026!

THIS HIGH SPECIFICATION LODGE WITH BRAND NEW HOT TUB is located within this impressive golf and country park resort in the quiet East Yorkshire countryside. This beautiful two bedroom lodge is offered for sale in 'move-in' condition and is situated on a quiet plot surrounded by lawn and trees, the property is a fabulous escape from the world for yourself or for others. If you want to be more social, there's a fantastic clubhouse with award winning restaurant, open all year round, free golf and practicing facilities all included in the annual site fees. It is perfectly situated for easy access into the historic City of York and the market town of Pocklington as well as a short drive over the picturesque Yorkshire Wolds to the stunning East Coast. The internal accommodation fully comprises hallway and utility, living room, dining kitchen with fitted appliances, master bedroom with dressing area & en-suite, second double bedroom and house bathroom. To the outside is a raised decked area for outside relaxing and sunken hot tub. Plenty of parking completes this lovely home. An in-person viewing is highly recommended!

Hallway/Utility

Living Room

Dining Kitchen

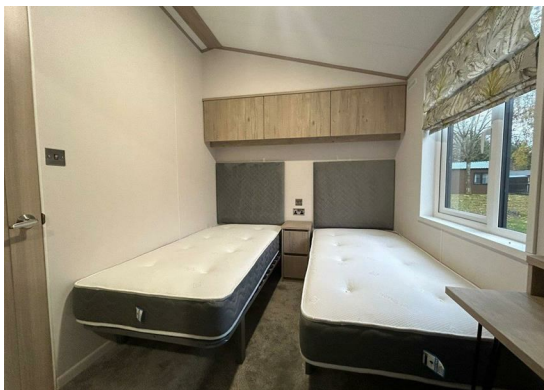
Master Bedroom

En-Suite

Bedroom 2

Bathroom

Outside

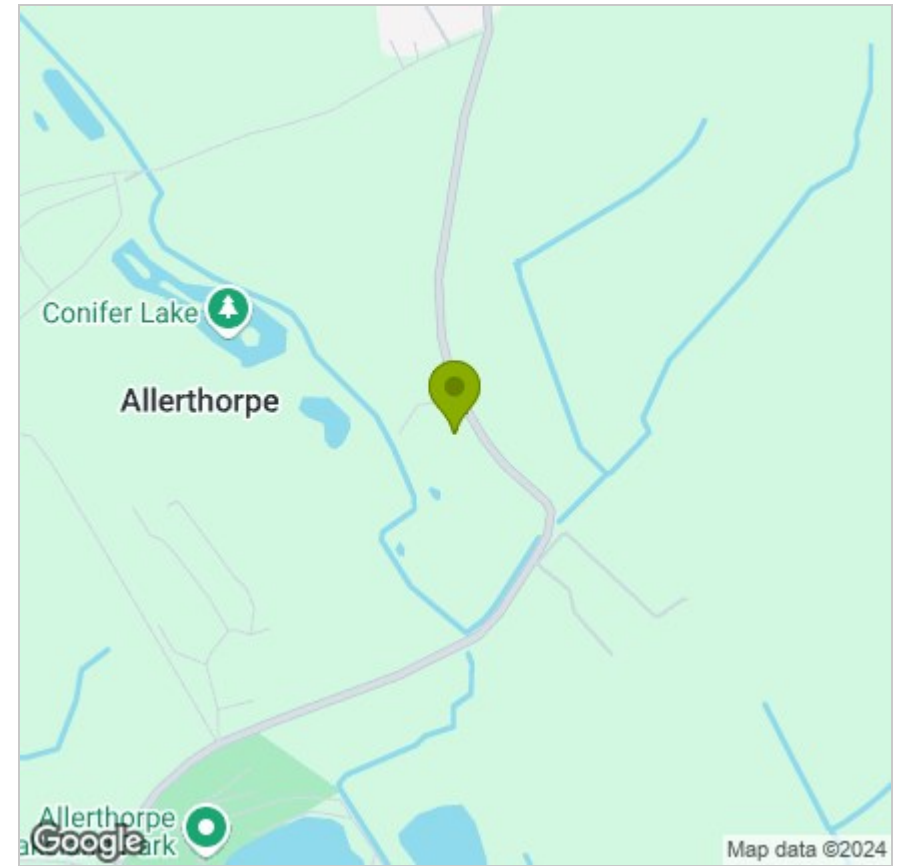




FLOOR PLAN



LOCATION



EPC

These particulars, whilst believed to be accurate are set out as a general outline only for guidance and do not constitute any part of an offer or contract. Intending purchasers should not rely on them as statements of representation of fact, but must satisfy themselves by inspection or otherwise as to their accuracy. No person in this firm's employment has the authority to make or give any representation or warranty in respect of the property.