



Royal Westmoreland Drive Allerthorpe Golf & Country Park Allerthorpe

, YO42 4RL

£110,000

 2  2  1 

HIGH SPEC LODGE WITH BRAND NEW HOT TUB - TERRIFIC INVESTMENT - SITE FEES PAID TO 2025 Located within this impressive golf and country park resort in the quiet East Yorkshire countryside, this highly impressive two bedroom lodge is offered for sale in 'move-in' condition. Nestled within the park on a quiet plot surrounded by lawn and trees, the property can either be used as an investment retreat but would also be very suitable as a second home. It is perfectly situated for easy access into the historic City of York and the market town of Pocklington as well as a short drive over the picturesque Yorkshire Wolds to the stunning east coast. There are also onsite amenities including the 9 hole golf course and is just a 5 minute walk into Allerthorpe village with its excellent country pub. The internal accommodation fully comprises hallway and utility, living room, dining kitchen with fitted appliances, master bedroom with dressing area & en-suite, second double bedroom and house bathroom. To the outside is a raised decked area for outside relaxing and sunken hot tub. There is also a driveway for parking. An internal viewing is highly recommended!

Hallway/Utility

Living Room

Dining Kitchen

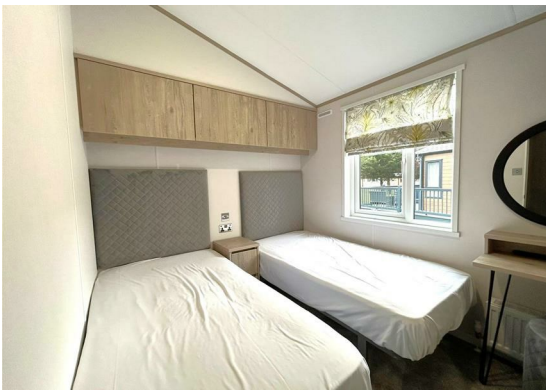
Master Bedroom

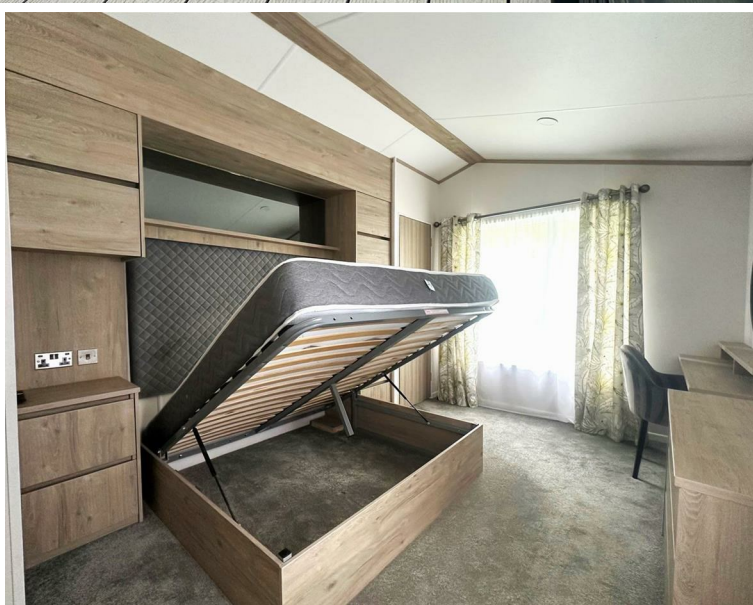
En-Suite

Bedroom 2

Bathroom

Outside

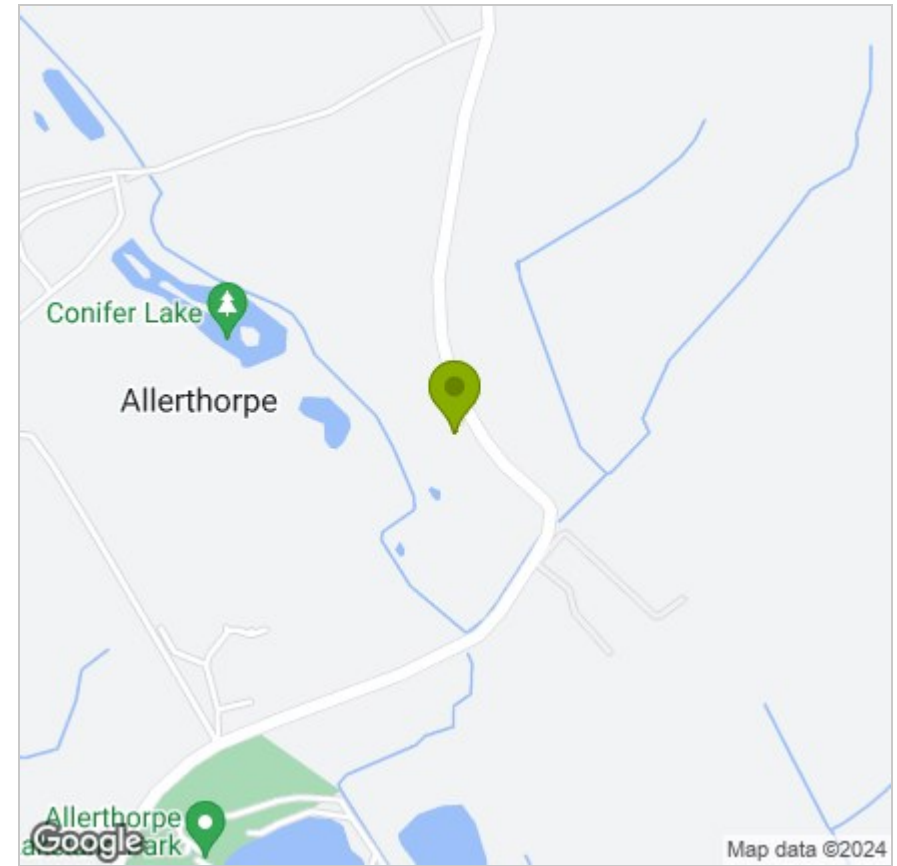




FLOOR PLAN



LOCATION



EPC

These particulars, whilst believed to be accurate are set out as a general outline only for guidance and do not constitute any part of an offer or contract. Intending purchasers should not rely on them as statements of representation of fact, but must satisfy themselves by inspection or otherwise as to their accuracy. No person in this firm's employment has the authority to make or give any representation or warranty in respect of the property.