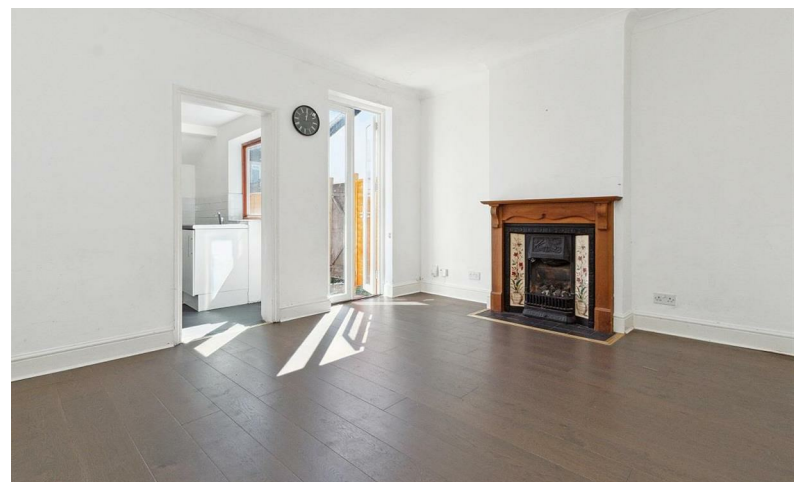


C. JAMES & Co.

SALES AND LETTINGS AGENTS



£700,000

22 Grove Road, South Wimbledon, London, SW19 1BL

22 Grove Road, South Wimbledon, London, SW19 1BL

Upon entering, you are greeted by not one, but two reception rooms, offering ample space for relaxation and entertainment. The period features add character and warmth to the house, creating a cosy and inviting atmosphere. The modern kitchen is perfect for whipping up your favourite meals, while the private rear garden provides a tranquil outdoor space for al fresco dining or simply enjoying the fresh air. Upstairs, you will find two double bedrooms, with the master bedroom being particularly spacious and bright. The modern bathroom ensures convenience and style for your daily routines.

Located in a sought-after area, this property is ideal for those looking for a blend of traditional charm and contemporary living. Ideal for commuters being 0.5 miles to South Wimbledon Station. Local amenities are all nearby

Don't miss the opportunity to make this house your home - book a viewing today and step into your future!

