



Gordon Road, Ealing, W5

£774,950

For Sale



- TWO DOUBLE BEDROOMS
- SEPARATE KITCHEN
- APPROX 1487 SQ FT
- APPROX 70FT REAR GARDEN

- TWO RECEPTION ROOMS
- BREAKFAST SPACE
- DETACHED PERIOD PROPERTY
- OFF STREET PARKING

**PUBLIC NOTICE - Flat 1, 73 Gordon Road, Ealing, W5 - We are in receipt of an offer of £800,000 subject to contract for this property. Anyone wishing to place a higher offer must do so before legal exchange of contracts.**

A beautiful double fronted period property covering approx. 1487 sq. ft., situated on a prime road in Ealing Broadway. Set on the ground floor, the flat offers high ceilings throughout, and consists of two large reception rooms, a spacious kitchen with space for dining, two bedrooms and two bathrooms. The property further benefits from a cellar and a superb private rear garden.

The property is only a short walk away from Ealing Broadway & Ealing Common Station, offering Central and District underground lines as well as mainline services, soon to be Crossrail. The mix of well-known retailers, restaurants and cafés in Ealing Town Centre mean you won't have to travel far for dining or shopping excursions.



**PUBLIC NOTICE - Flat 1, 73 Gordon Road, Ealing, W5 - We are in receipt of an offer of £774,950 subject to contract for this property. Anyone wishing to place a higher offer must do so before legal exchange of contracts.**

A beautiful double fronted period property covering approx. 1487 sq. ft., situated on a prime road in Ealing Broadway. Set on the ground floor, the flat offers high ceilings throughout, and consists of two large reception rooms, a spacious kitchen with space for dining, two bedrooms and two bathrooms. The property further benefits from a cellar and a superb private rear garden.

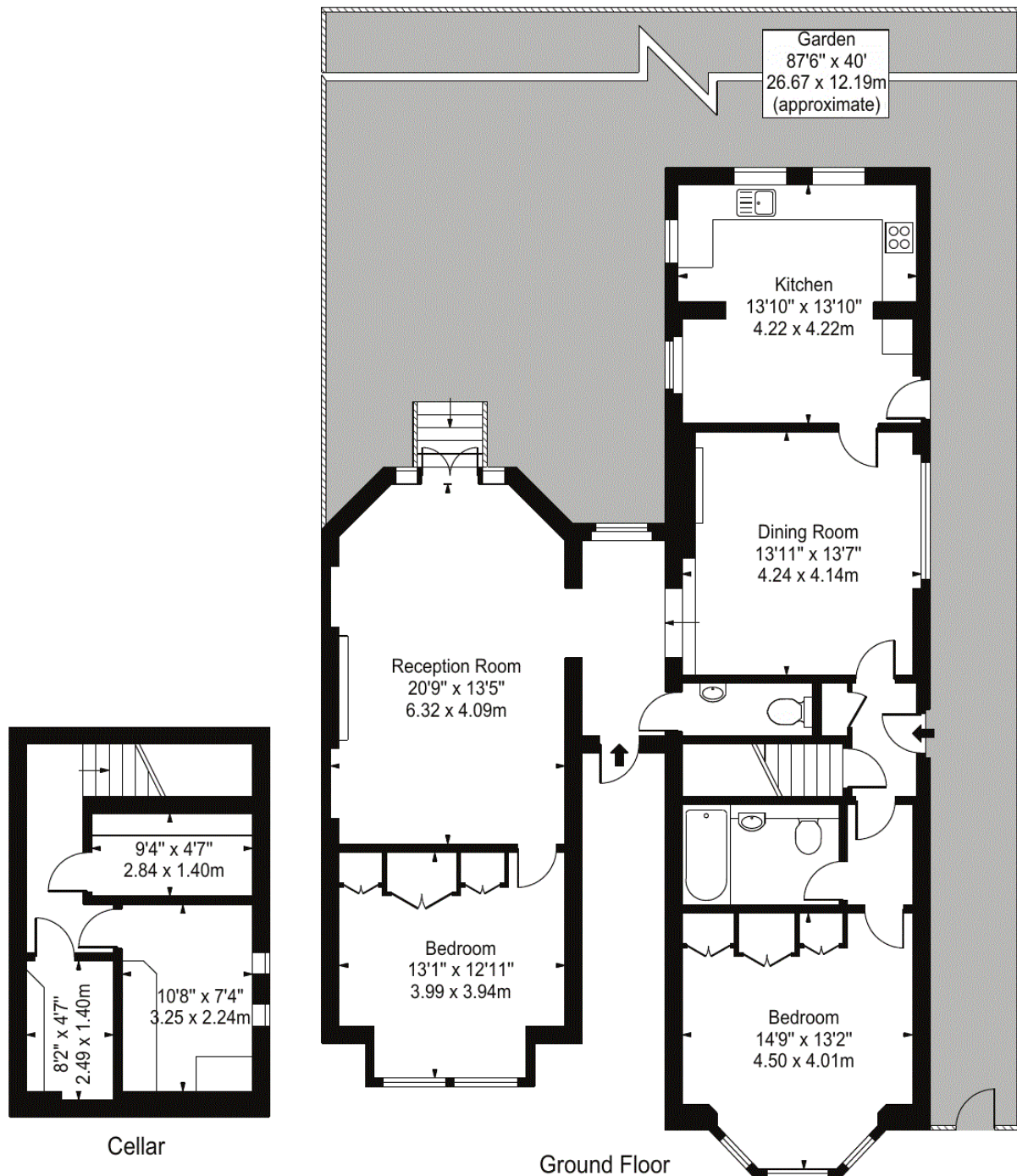
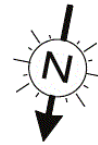
The property is only a short walk away from Ealing Broadway & Ealing Common Station, offering Central and District underground lines as well as mainline services, soon to be Crossrail. The mix of well-known retailers, restaurants and cafés in Ealing Town Centre mean you won't have to travel far for dining or shopping excursions. With Haven Green a stones throw away for picnics or strolling on a Sunday afternoon and Walpole Park 5 minutes away with its café and ponds, you will be spoilt for choice when it comes to green open spaces.

Viewings to this impressive property are highly recommended! For more information please call Rolfe East on 020 8567 2242.

## Gordon Road, W5

Approx. Total Internal Area 1487 Sq Ft - 138.15 Sq M  
(Including Cellar)

Approx. Gross Internal Area 1448 Sq Ft - 134.52 Sq M  
(Excluding Cellar)



For Illustration Purposes Only - Not To Scale Floor Plan by Mira Nikolova Photography

This floor plan should be used as a general outline for guidance only and does not constitute in whole or in part an offer or contract. Any intending purchaser or lessee should satisfy themselves by inspection, searches, enquiries and full survey as to the correctness of each statement. Any areas, measurements or distances quoted are approximate and should not be used to value a property or be the basis of any sale or let.

# Map

