

Rolfe East



Harriers Close, Ealing, W5 3UA

£2,150 pcm

- Two bedrooms
- Excellent condition
- Furnished
- Available 29th December 2025
- Second floor flat
- Double glazed windows
- Nine minutes walk to Ealing Broadway Station
- EPC rating: C / council tax band: D

9 Harriers Close, Ealing W5 3UA

Presented in an excellent condition and just minutes walk from Ealing Broadway Station shops, restaurant's is this modern furnished two bedroom apartment. The accommodation comprises fully fitted kitchen spacious lounge and family bathroom other benefits include off street parking, and available from 30th of January 2026.

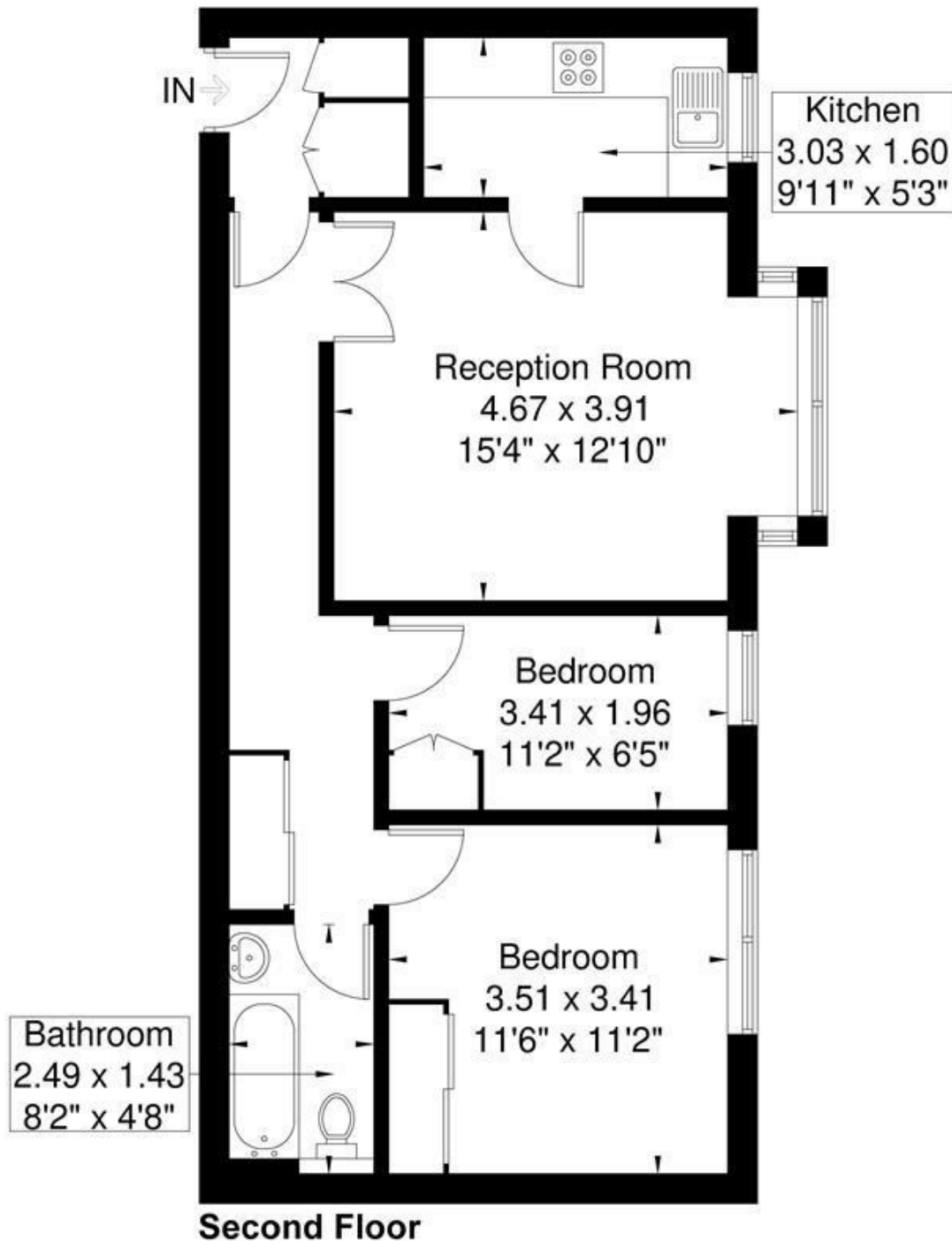


Council Tax Band: D



Harriers Close

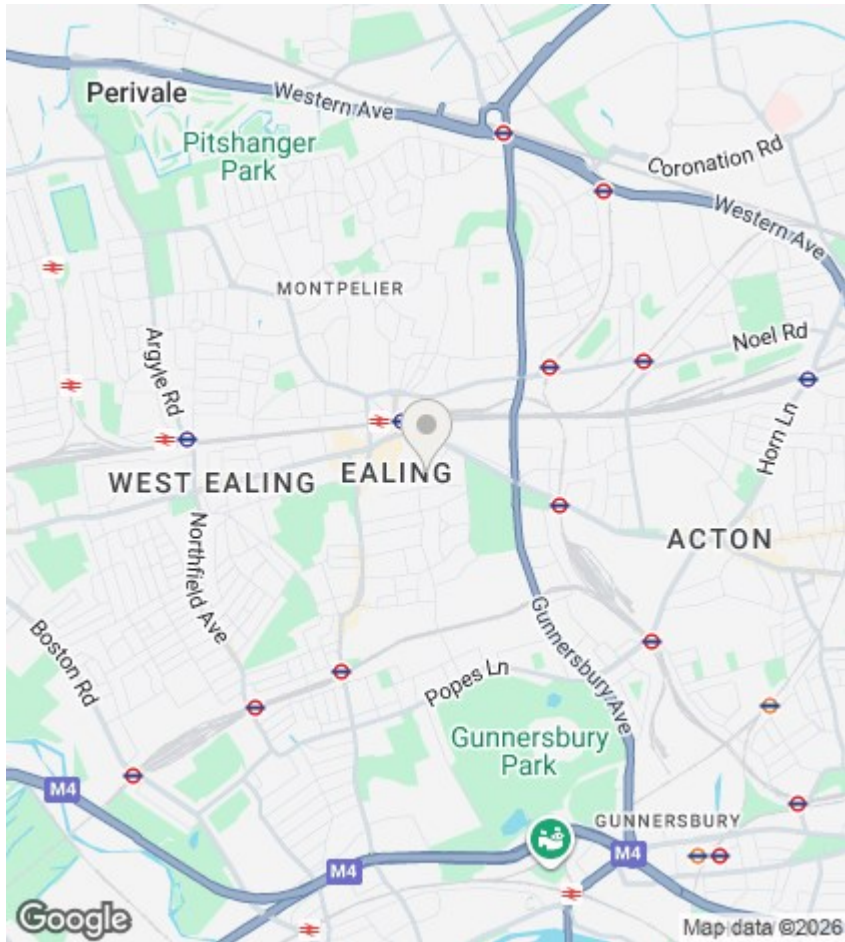
Approximate Gross Internal Area = 58.5 sq m / 629 sq ft



Although every attempt has been made to ensure accuracy, all measurements are approximate.

The floorplan is for illustrative purposes only and not to scale.

© www.perspective.co.uk



Directions

Viewings

Viewings by arrangement only. Call 020 8840 7707 to make an appointment.

EPC Rating:
D

Energy Efficiency Rating		
	Current	Potential
Very energy efficient - lower running costs		
(92 plus) A		
(81-91) B		82
(69-80) C		
(55-68) D	65	
(39-54) E		
(21-38) F		
(1-20) G		
Not energy efficient - higher running costs		
England & Wales		EU Directive 2002/91/EC