

Rolfe East



The Knoll, Ealing, W13 8HY

£875,000

- Three bedrooms
- No upper chain
- EPC Rating: D / council tax band: F
- End of terrace house
- Beautiful communal gardens
- Large garden
- Garage

The Knoll

Approximate Gross Internal Area = 103.2 sq m / 1111 sq ft

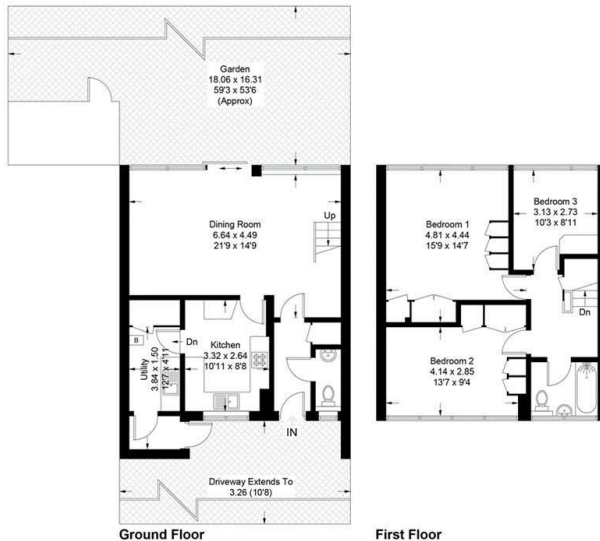
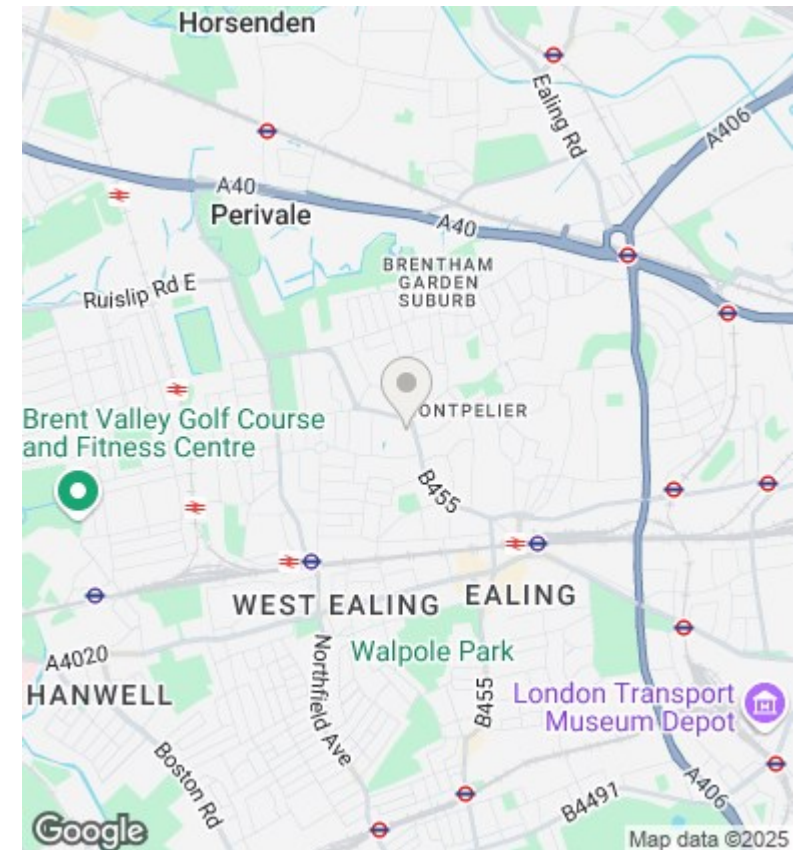


Illustration for identification purposes only.
measurements are approximate, not to scale. (ID900610)



Directions

Viewings

Viewings by arrangement only. Call 020 8567 2242 to make an appointment.

Council Tax Band

F

EPC Rating:

D

Energy Efficiency Rating		
	Current	Potential
Very energy efficient - lower running costs		
(92 plus) A		85
(81-91) B		
(69-80) C		60
(55-68) D		
(39-54) E		
(21-38) F		
(1-20) G		
Not energy efficient - higher running costs		
England & Wales		EU Directive 2002/91/EC