

# Rolfe East



Castle Hill Parade, Ealing, W13 8JP

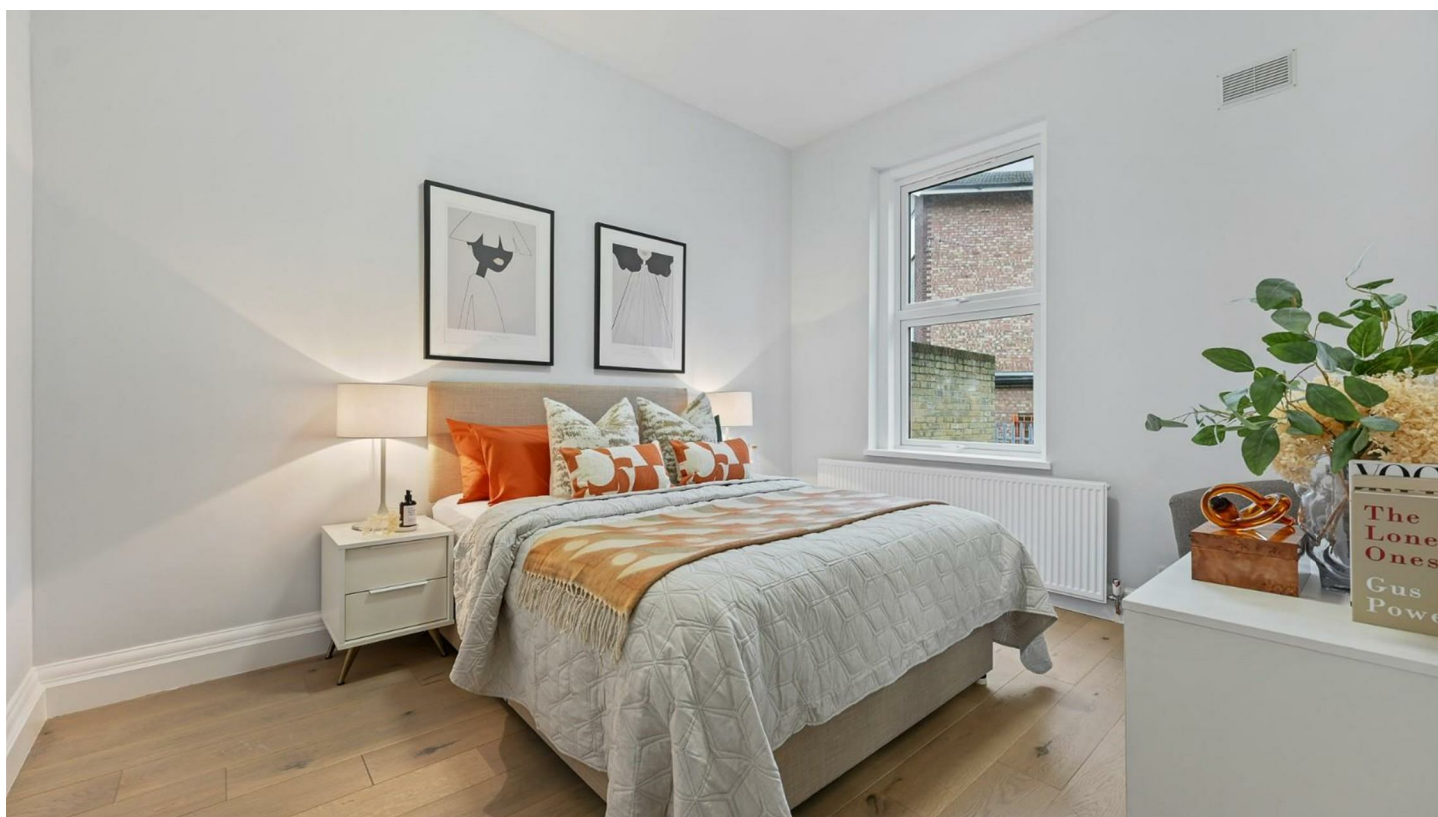
£349,000

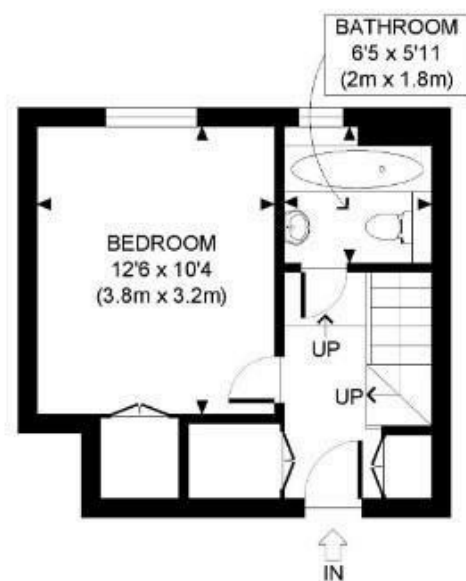
- One double bedroom
- Excellent condition throughout
- Close to Elizabeth Line station
- No upper chain
- Private garden
- Double glazed windows
- Gas central heating
- EPC rating: D

A beautiful bright and spacious one double bedroom garden flat presented in a truly exceptional condition throughout and with the benefit of no upper chain.



Council Tax Band: B





RAISED GROUND FLOOR  
GROSS INTERNAL  
FLOOR AREA 267 SQ FT



LOWER GROUND FLOOR  
GROSS INTERNAL  
FLOOR AREA 212 SQ FT



APPROX. GROSS INTERNAL FLOOR AREA: 479 SQ FT/ 45 SQM

**PROPERTY PHOTO PLANS**.CO.UK  
ONE STOP SHOP FOR PROPERTY MARKETING

This plan is for illustrative purposes only and should be used as such by any prospective client. Whilst every attempt has been made to ensure the accuracy of the Floor Plan contained here, measurements of the doors, windows, rooms and any other items are approximate and no responsibility is taken for any errors, omissions, or misstatement. The services, systems and appliances shown have not been tested and no guarantee as to the operability or efficiency can be given.





Directions

Viewings

Viewings by arrangement only. Call 020 8567 2242 to make an appointment.

EPC Rating:  
D

Energy Efficiency Rating		
	Current	Potential
Very energy efficient - lower running costs		
(92 plus) A		
(81-91) B		78
(69-80) C		
(55-68) D	61	
(39-54) E		
(21-38) F		
(1-20) G		
Not energy efficient - higher running costs		
England & Wales		EU Directive 2002/91/EC