



## Flat 1, 15 Rondou Road

Cricklewood, London, NW2 3HB

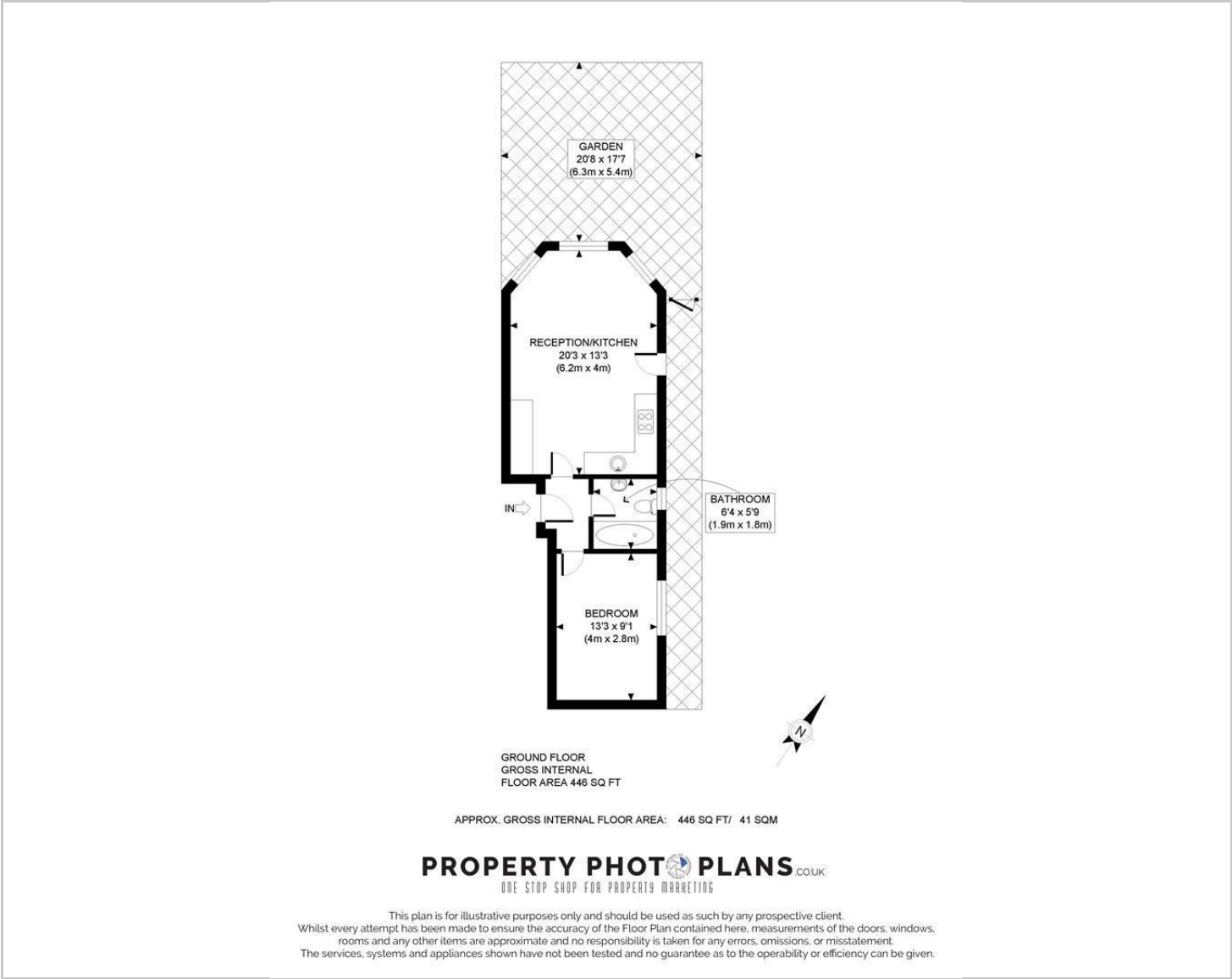
£1,850 Per Calendar Month



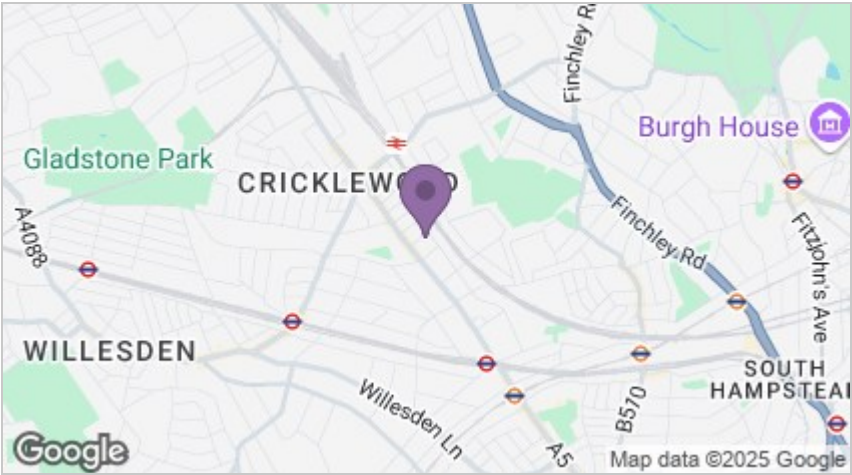
Lovely ground floor 1 bedroom flat situated close to all the local amenities of Cricklewood. The property comprises of a large reception room with luxury open plan kitchen, bedroom, modern full bathroom and access to private secluded front patio garden. The property is offered on a furnished basis and available from the 05/07/2025 - council tax band C



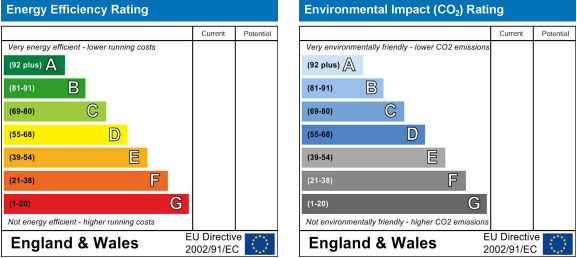
Floor Plans



Area Map



Energy Efficiency Graph



These particulars, whilst believed to be accurate are set out as a general outline only for guidance and do not constitute any part of an offer or contract. Intending purchasers should not rely on them as statements of representation of fact, but must satisfy themselves by inspection or otherwise as to their accuracy. No person in this firm's employment has the authority to make or give any representation or warranty in respect of the property.

