



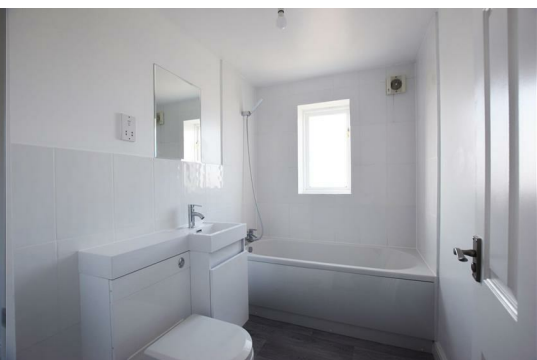
## Dairyman Close

Cricklewood, London, NW2 1EP

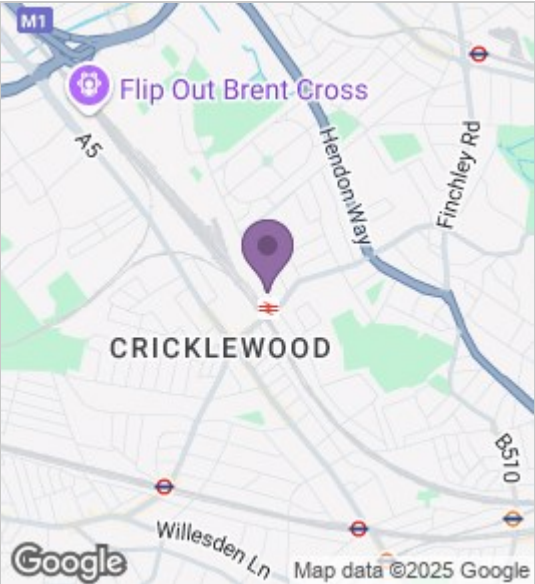
£1,550 Per Calendar Month



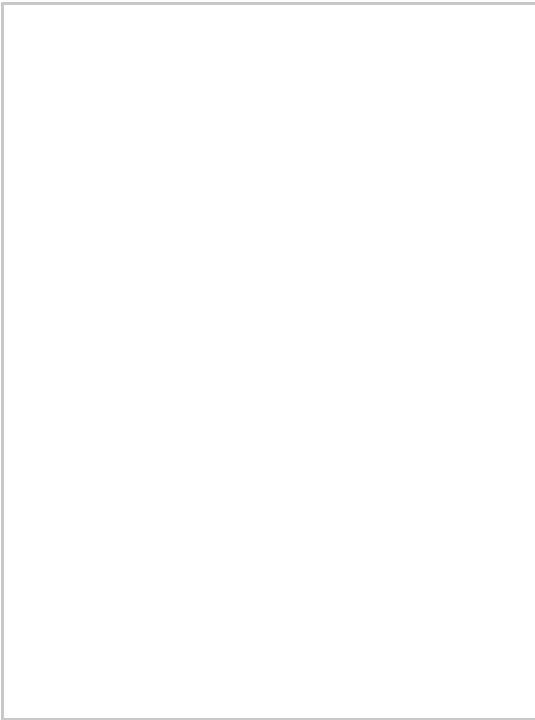
Lovely 2nd floor 1 bedroom flat in this modern gated development in Cricklewood. The property benefits from a large reception room, kitchen, double bedroom and new modern bathroom and is offered on a furnished basis plus one off street parking space. Situated close to the Thames Link station and the amenities of Cricklewood with Brent X shopping centre close by and access to the A41, A406 and M1. Council Tax band D - the flat is available from 31 May 2025 - plus £30 per month for water



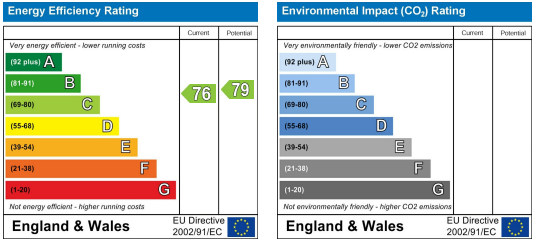
Area Map



Floor Plans



Energy Efficiency Graph



These particulars, whilst believed to be accurate are set out as a general outline only for guidance and do not constitute any part of an offer or contract. Intending purchasers should not rely on them as statements of representation of fact, but must satisfy themselves by inspection or otherwise as to their accuracy. No person in this firms employment has the authority to make or give any representation or warranty in respect of the property.

