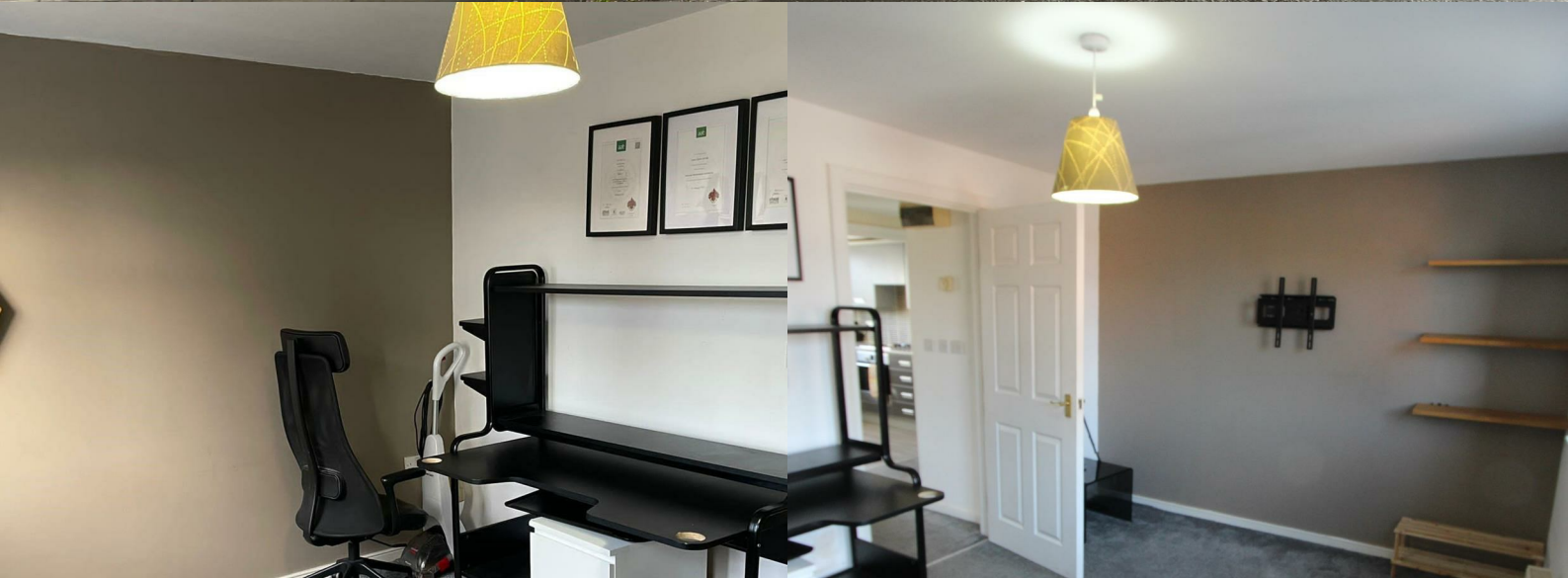




# RIDGEWAY

## RESIDENTIAL SERVICES



**12 Newarth Drive**

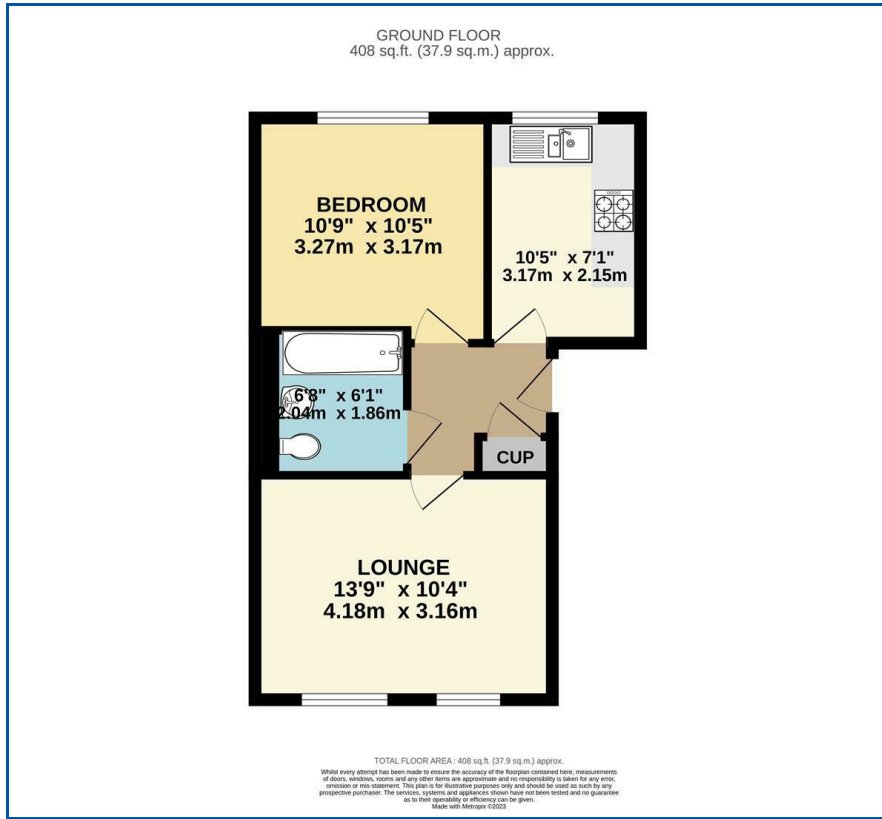
, Lymm, WA13 0LH

**Offers In The Region Of £66,250**





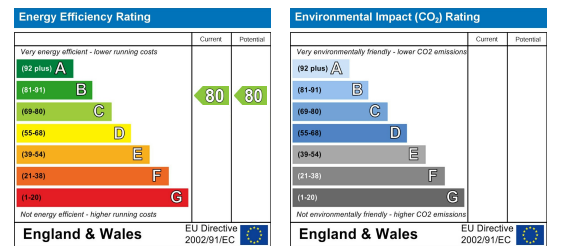
## Floor Plan



## Area Map



## Energy Efficiency Graph



## Viewing

Please contact us on 01925 756931 if you wish to arrange a viewing appointment for this property or require further information.

- 50% Shared Ownership
- Allocated Parking
- Double Glazing
- Viewing Essential
- Modern First Floor Apartment
- Gas Central Heating
- Popular Location

50% shared ownership property which is ideal for first time buyers. This modern one bedroom first floor apartment located on the popular seasons development in Lymm is being sold with full vacant possession and will be an ideal first home.

The property enjoys a secure entry system, Lounge, a stylish fully equipped kitchen, master bedroom and modern three piece bathroom. The apartment has gas central heating & double glazing. Allocated Parking.

Viewing is essential to appreciate the accommodation on offer.



These particulars, whilst believed to be accurate are set out as a general outline only for guidance and do not constitute any part of an offer or contract. Intending purchasers should not rely on them as statements of representation of fact, but must satisfy themselves by inspection or otherwise as to their accuracy. No person in this firm's employment has the authority to make or give any representation or warranty in respect of the property.