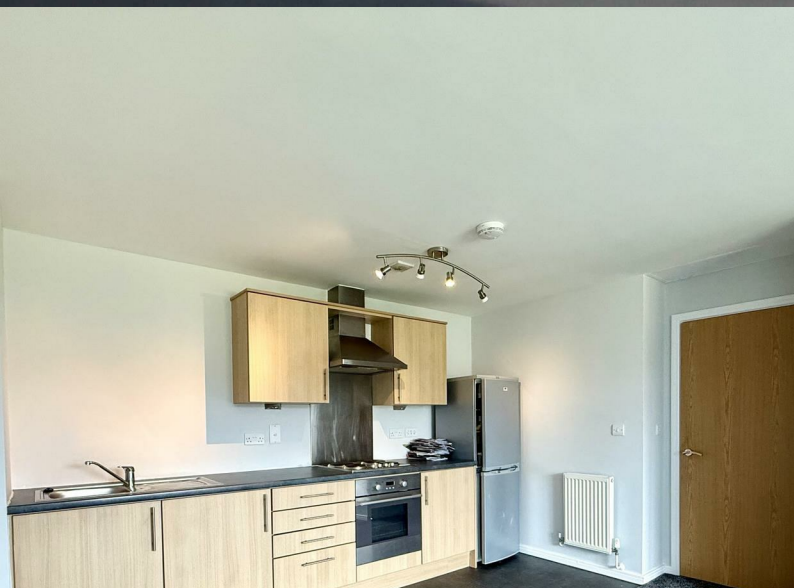




RIDGEWAY

RESIDENTIAL SERVICES



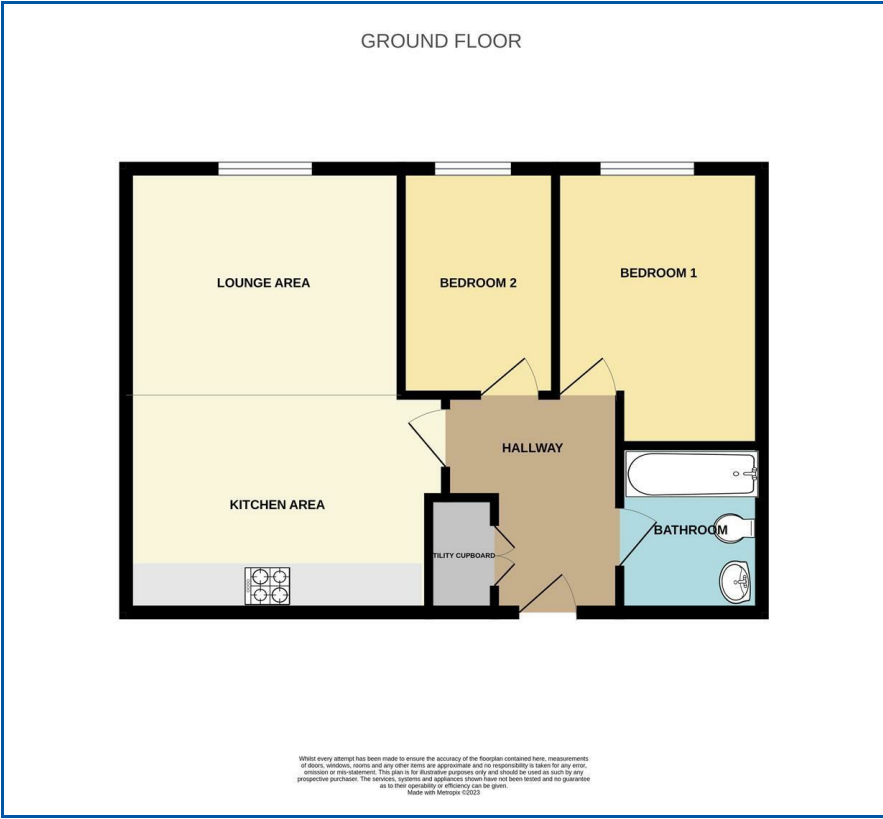
Flat 3 Chaise Meadow

, Lymm, WA13 9NX

Offers In The Region Of £155,000



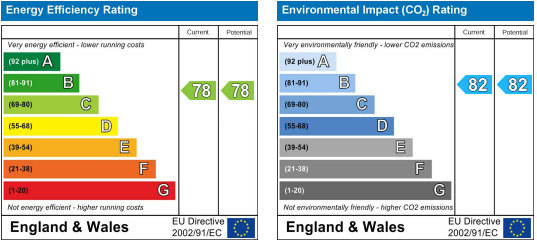
Floor Plan



Area Map



Energy Efficiency Graph



Viewing

Please contact us on 01925 756931 if you wish to arrange a viewing appointment for this property or require further information.

- Large Open Plan Living Room
- Kitchen
- Two Bedrooms
- Modern Bathroom
- Gas Central Heating
- Double Glazed
- Secure Allocated Parking
- Ideal Investment Property
- No Onward Chain
- Viewing Recommended

This charming apartment is perfect for first-time buyers or savvy investors. Briefly comprising of Entrance Hall: Welcoming entry with a utility cupboard that houses a washing machine for added convenience. Open Plan Living: Spacious living room seamlessly flows into the fitted kitchen, creating an ideal space for entertaining and everyday living. Bedrooms: Two comfortable bedrooms, offering flexibility for guests or a home office. Modern Bathroom: Contemporary design with stylish fixtures and fittings. Heating and Glazing: Efficient gas central heating and double glazing ensure comfort and energy efficiency. Secure allocated parking provides peace of mind. Viewing highly recommended to appreciate the quality and potential of this property! This apartment combines modern living with a prime location, making it a smart choice for both buyers and investors. Don't miss out!



These particulars, whilst believed to be accurate are set out as a general outline only for guidance and do not constitute any part of an offer or contract. Intending purchasers should not rely on them as statements of representation of fact, but must satisfy themselves by inspection or otherwise as to their accuracy. No person in this firms employment has the authority to make or give any representation or warranty in respect of the property.