



# RIDGEWAY

## RESIDENTIAL SERVICES



### 43 Chaise Meadow

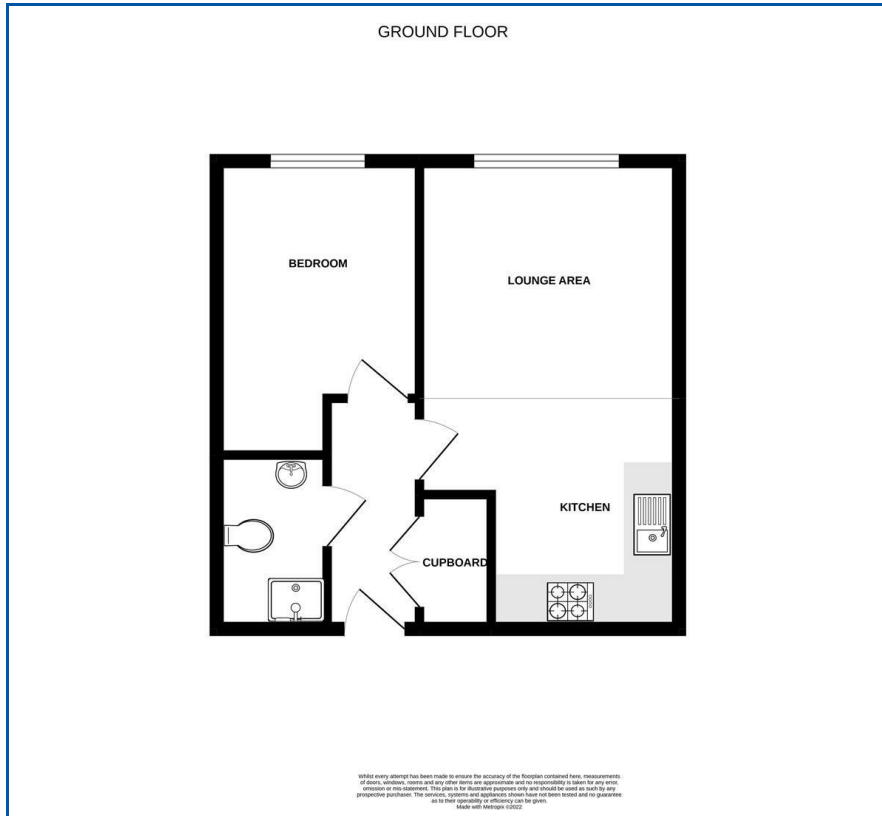
, Lymm, WA13 9NX

Asking Price £96,000





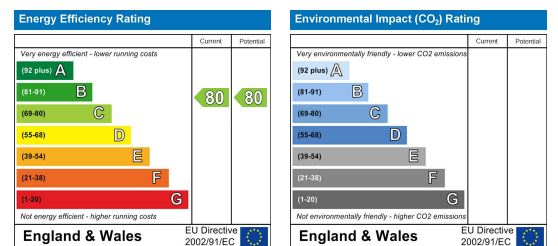
## Floor Plan



## Area Map



## Energy Efficiency Graph



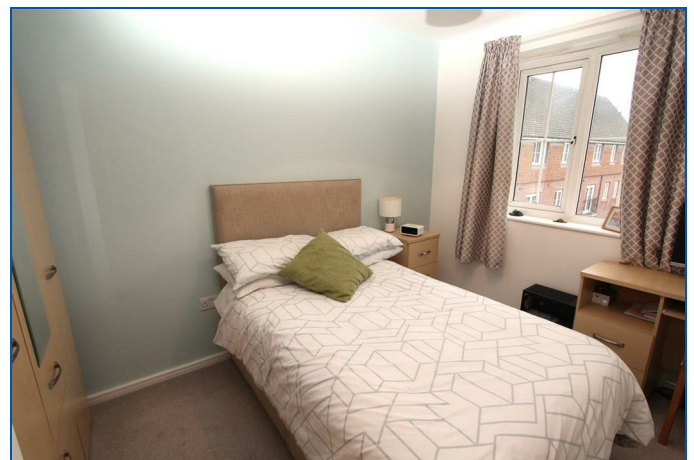
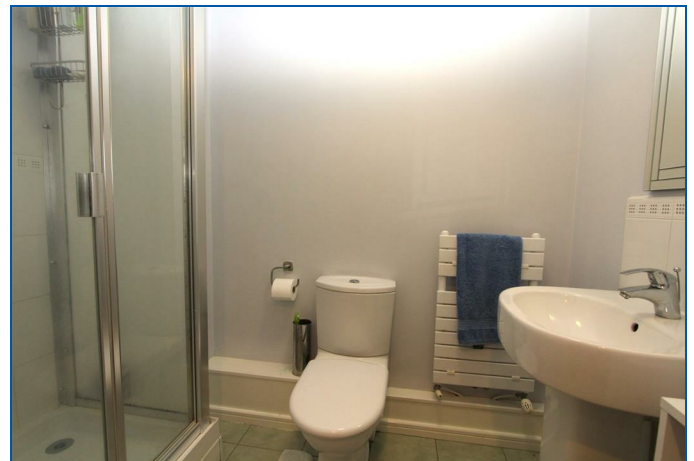
## Viewing

Please contact us on 01925 756931 if you wish to arrange a viewing appointment for this property or require further information.

- Affordable Housing
- Open Plan Living Dining Kitchen
- Allocated Parking
- One Bedroom Apartment
- Heatley Mere Development
- Viewing Highly Recommended

Ridgeway are pleased to offer For Sale an affordable home, which is immaculately presented one bedroom second floor apartment situated on the popular Heatley Mere Development. With the benefit of one allocated parking space located to the rear of the apartment block the accommodation briefly comprises Communal entrance hall, private entrance hallway, living dining kitchen, master bedroom and bathroom.

An affordable home aims to make homes available for people who can't afford to buy at market rates. This property is offered as a 75% affordable home and will always remain 25% below the market value. Unlike shared ownership no rent is paid on the remaining 25%.



These particulars, whilst believed to be accurate are set out as a general outline only for guidance and do not constitute any part of an offer or contract. Intending purchasers should not rely on them as statements of representation of fact, but must satisfy themselves by inspection or otherwise as to their accuracy. No person in this firm's employment has the authority to make or give any representation or warranty in respect of the property.