



# RIDGEWAY

## RESIDENTIAL SERVICES



**85 Cyril Bell Close**

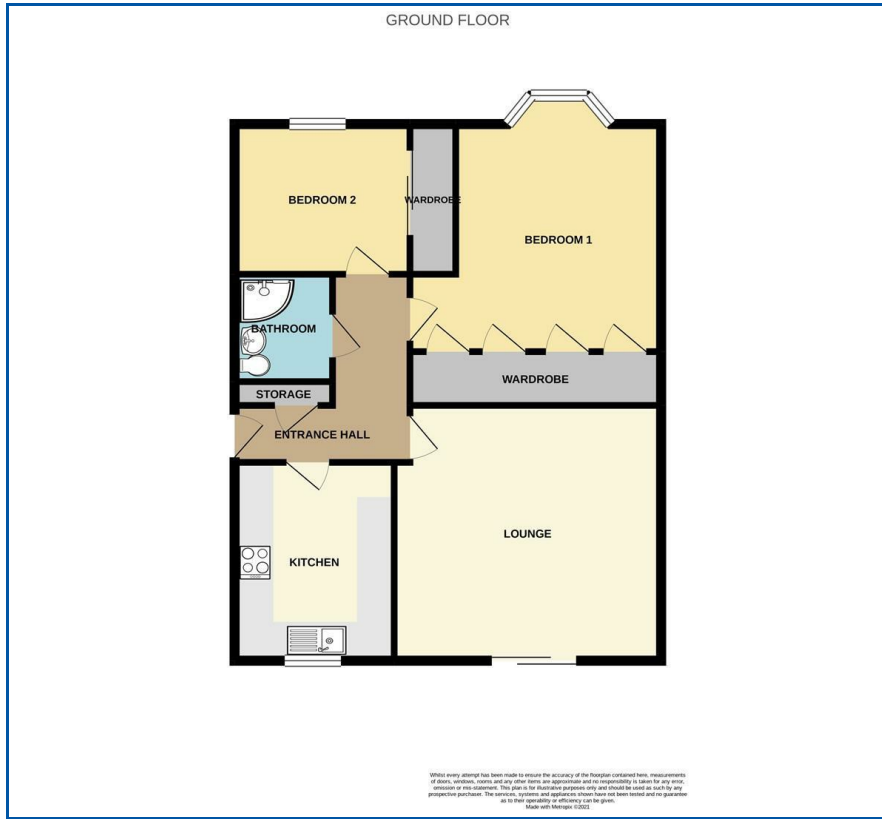
, Lymm, WA13 0JU

**Offers In Excess Of £245,000**





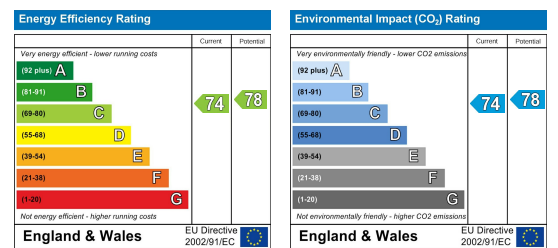
## Floor Plan



## Area Map



## Energy Efficiency Graph



## Viewing

Please contact us on 01925 756931 if you wish to arrange a viewing appointment for this property or require further information.

- Over 55's retirement apartment
- Spacious Lounge
- Well Maintained Communal Gardens
- Warden assistance if required
- Within walking distance to Lymm Village
- Ground Floor
- Two double bedrooms
- Stunning Canal Views
- On site laundry room
- No chain

A Charming Two Bedroom ground floor apartment with beautiful views overlooking the Bridgewater canal and is just a short walk from Lymm village centre. This Over 55's retirement apartment has warden assistance if required and a intercom door entry system. The accommodation briefly comprises of a hallway with walking storage cupboard, lounge, fitted kitchen, two double bedrooms both with fitted wardrobes. Well kept communal gardens and a Laundry room. We strongly recommend that potential purchasers take the time to view the property internally to appreciate the accommodation on offer.



These particulars, whilst believed to be accurate are set out as a general outline only for guidance and do not constitute any part of an offer or contract. Intending purchasers should not rely on them as statements of representation of fact, but must satisfy themselves by inspection or otherwise as to their accuracy. No person in this firm's employment has the authority to make or give any representation or warranty in respect of the property.