



ARNOLD
GREENWOOD

30 Helme Lodge, Natland – LA9 7QA

Kendal

£440,000

30 Helme Lodge

Natland, Kendal

The prestigious and exclusive Helme Lodge private estate offers highly individual accommodation set within five acres of landscaped grounds. The modern townhouse offers a unique opportunity for those aged over 55 to experience luxurious living, on the edge of Kendal Town.

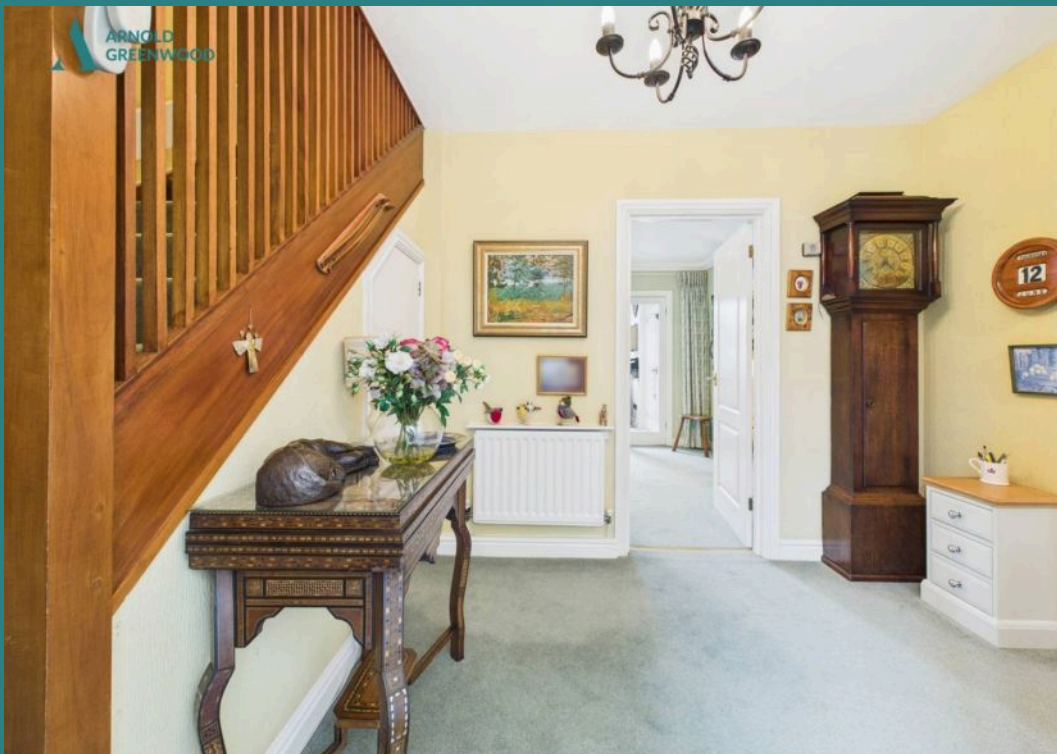
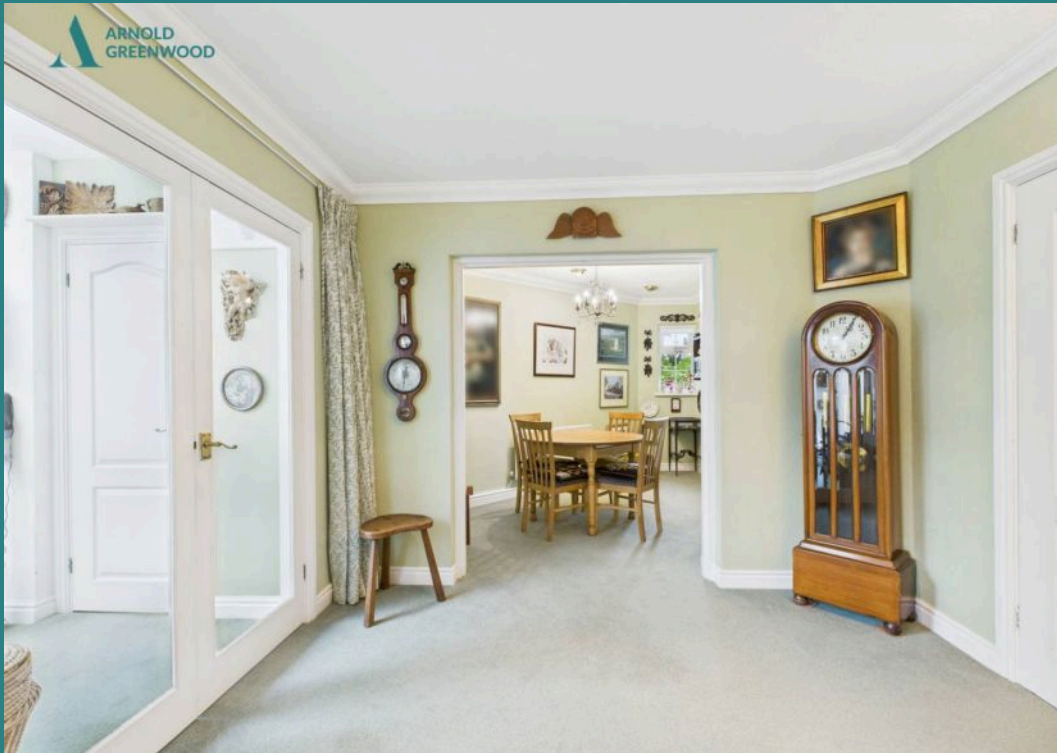
Upon entering the property, residents are greeted with an entrance hallway, open plan living room, dining room, and sunroom that exudes elegance and style. With access to a private terrace overlooking beautifully landscaped communal gardens and grounds, this space is ideal for both relaxation and entertaining guests.

The property features three double bedrooms, including a newly fitted contemporary en-suite, along with a family bathroom and a convenient ground floor cloakroom. Each bedroom offers a tranquil escape from the hustle and bustle of daily life.

Boasting a prime location in close proximity to supermarkets, accessible bus links to the town centre and beyond, local doctors Surgery, and Westmorland General Hospital, this 3-bedroomed mews cottage is not only convenient but also provides a peaceful retreat in a discreetly located development.

A comprehensively fitted and equipped modern kitchen ensures that culinary enthusiasts have everything they need, whilst the secure garage, residents parking, and visitor parking areas cater to those with vehicles.





Front Porch

5' 1" x 9' 0" (1.55m x 2.74m)

This spacious entrance offers a place to sit and enjoy far reaching views. Featuring full length windows and a glazed roof.

Hallway

9' 1" x 9' 8" (2.77m x 2.95m)

Generously spaced, providing access to the ground floor living spaces. Benefitting from steps to the first floor (currently fitted with a stairlift which is fully movable without damage to the carpets if required). This space conveniently offers under stair storage.

Living Room

14' 11" x 21' 0" (4.55m x 6.40m)

This spacious bright and airy room is freely open into the dining area, with sliding doors to the front terrace, fitted with additional double doors accessing the sunroom and further access into the study and inner hallway. The room features pastel green decor, spot lighting with the focal point being the living flame electric fire, inset with a marble hearth and mahogany surround.

Sunroom

10' 10" x 9' 7" (3.30m x 2.92m)

Ideal as a hobbies room or additional sitting room. Fitted with a glazed roof, sliding patio doors and useful storage cupboard.

Dining Room

3' 5" x 11' 9" (1.04m x 3.58m)

This room is open from the living room, creating an open plan feel, window to the side, Kitchen and additional access to the loft.

Kitchen

8' 9" x 11' 11" (2.67m x 3.63m)





Study

9' 1" x 8' 3" (2.77m x 2.51m)

The ground floor study features warm and vibrant decor and a leafy outlook, conveniently suited as a study or could be an additional fourth bedroom.

W.C

2' 10" x 5' 10" (0.86m x 1.78m)

The ground floor cloakroom situated off the inner hallway, offers a vanity sink, obscured window and W.C.

Bedroom One

10' 9" x 14' 10" (3.28m x 4.52m)

The spacious master bedroom. Pleasant outlook, space for a double/king-size bed with side tables. Plus inbuilt wardrobes and space for a vanity desk. Access to the contemporary ensuite.

En-Suite Shower Room

7' 2" x 5' 0" (2.18m x 1.52m)

This newly fitted modern shower room features travertine style wall and floor tiles. Featured lighting, walk-in shower, vanity sink unit and W.C. Concealed plumbing, featured heated towel rail and obscured window.

Bedroom Two

13' 2" x 8' 2" (4.01m x 2.49m)

Spacious double room, featuring pleasant views, inbuilt/additional space for wardrobes. Pleasant views and pendant lighting.

Bedroom Three

9' 7" x 9' 2" (2.92m x 2.79m)

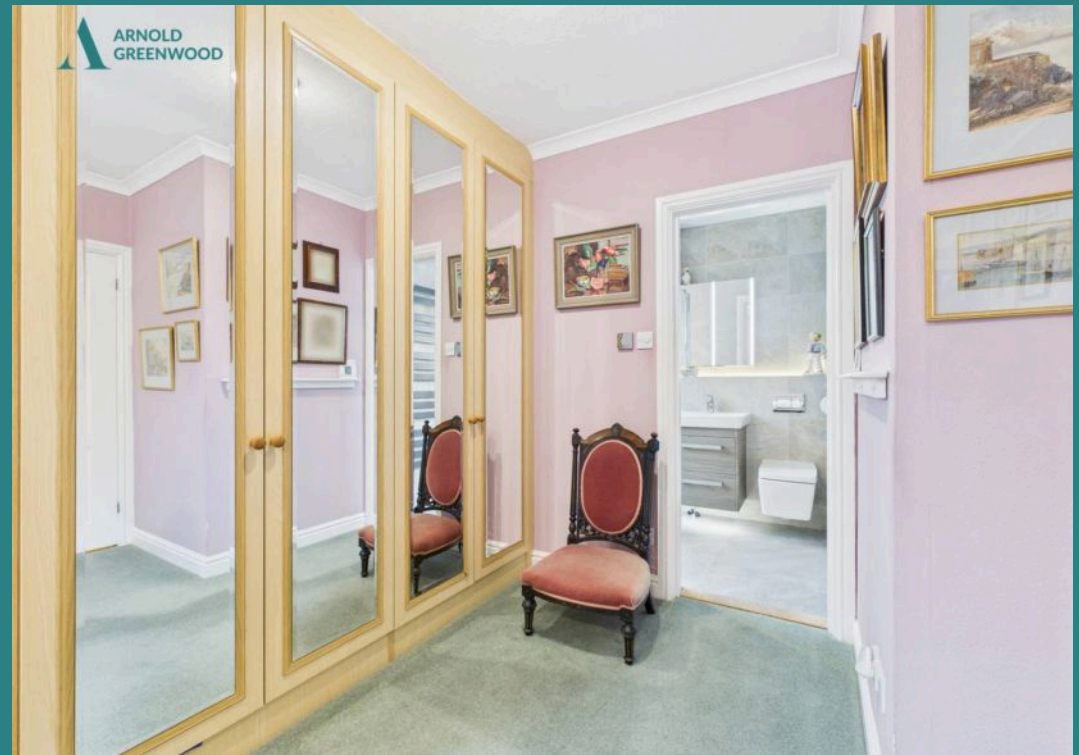
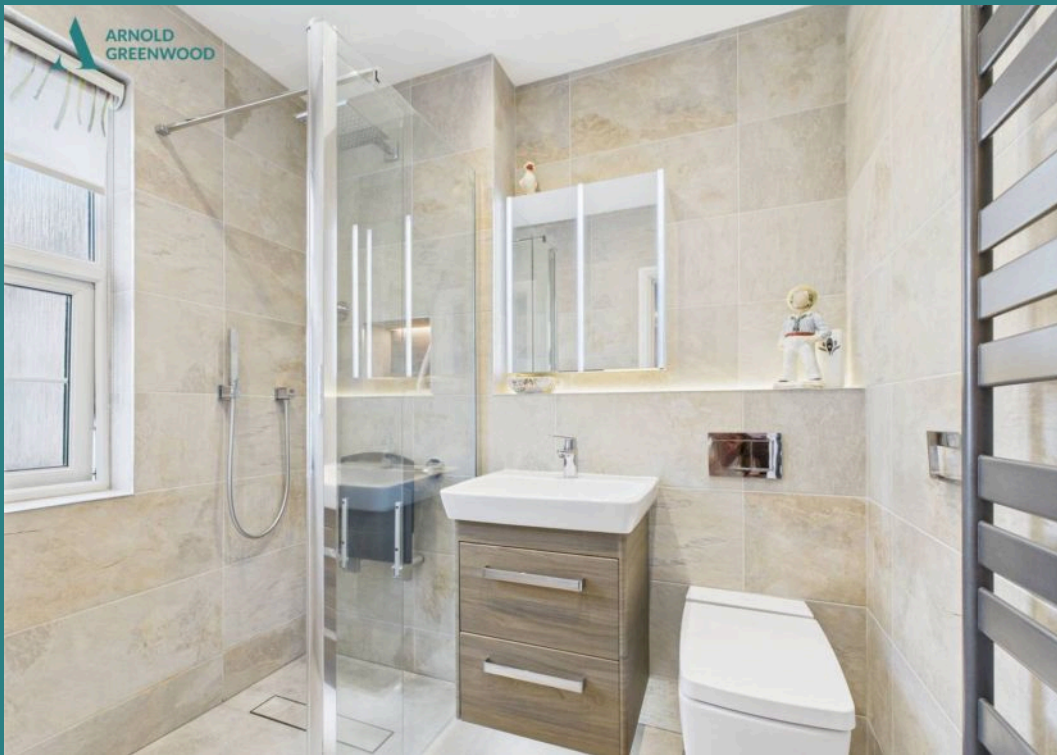
The smaller room of the three, but still a generously spaced single room/small double. Benefits from a pleasant outlook, vibrant warming decor and inbuilt storage.

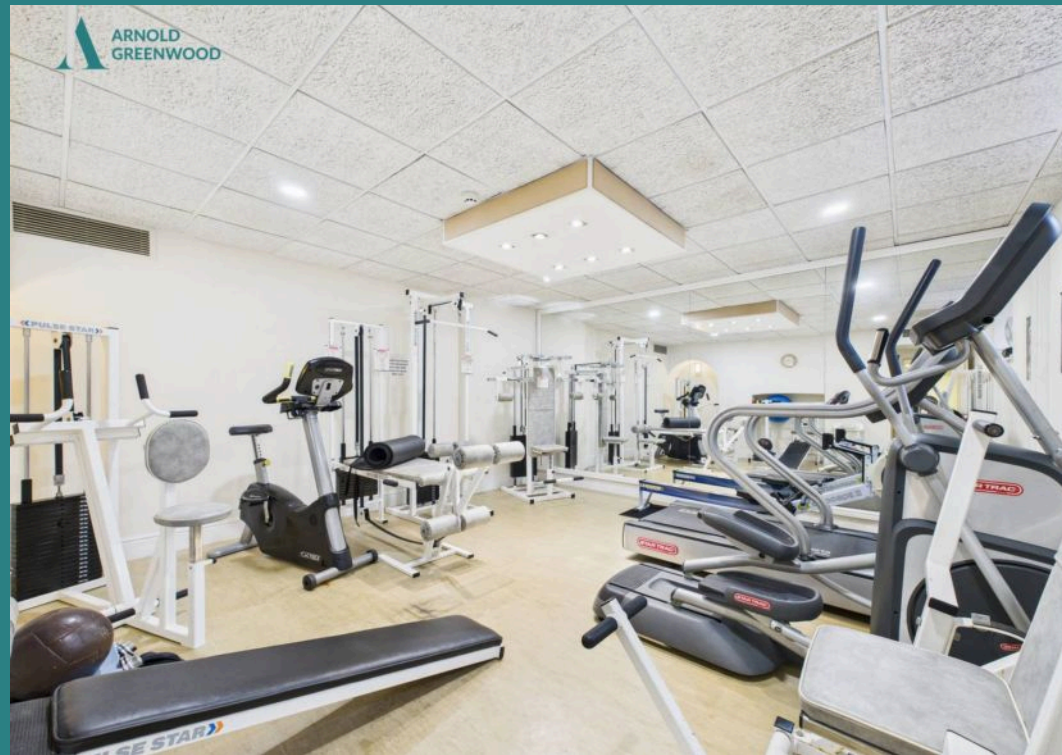
Bathroom

6' 10" x 5' 7" (2.08m x 1.70m)

Three piece traditionally styled, bathroom suite. White timeless in style. Hardwearing vinyl flooring.







GARDEN

The 5 acre of estate, is surrounded by trees and beautifully laid out, carefully maintained gardens, with sweeping lawns, wide herbaceous borders walled gardens, water features, pathways and a wide variety of specimen shrubs and trees.

GARAGE

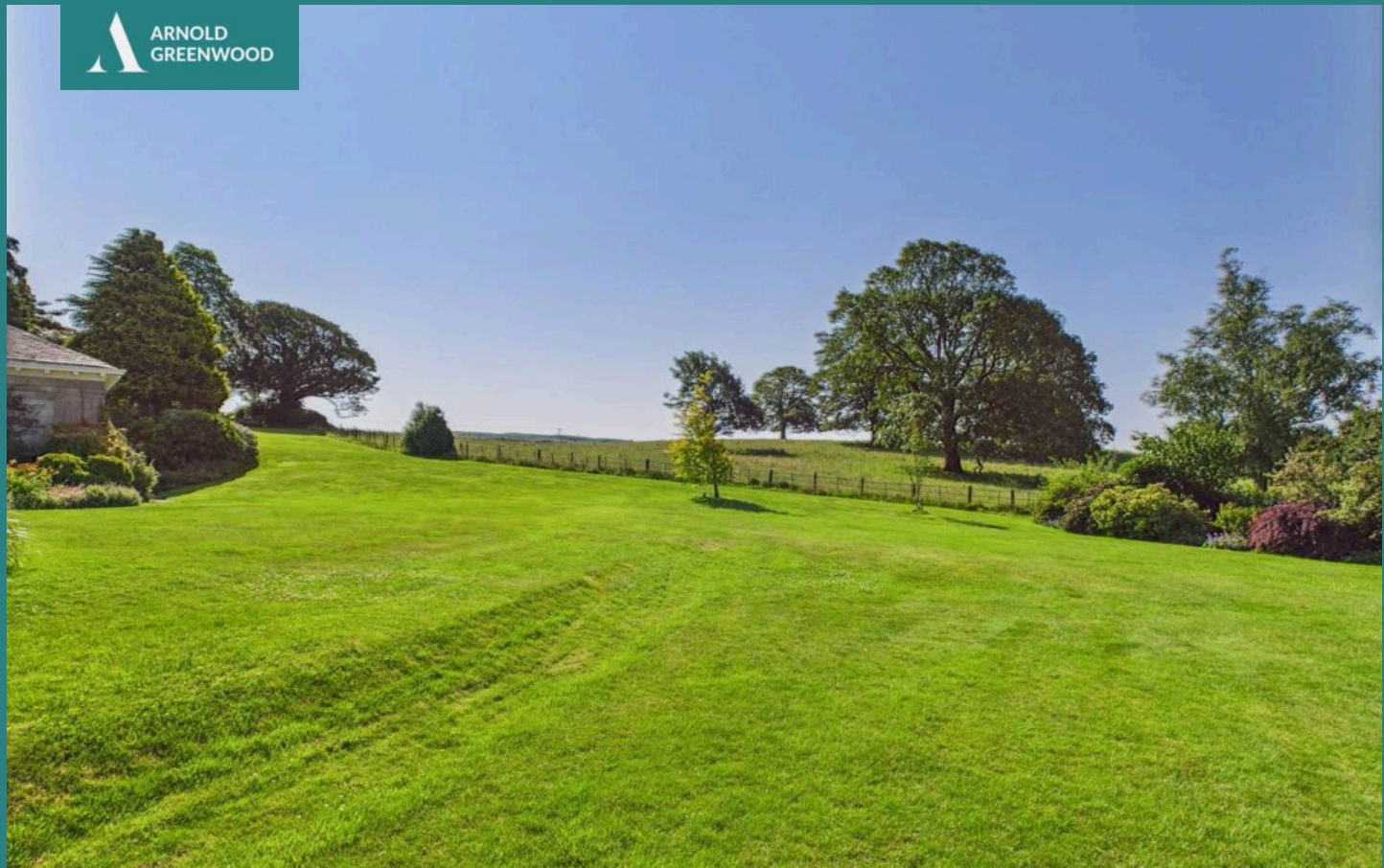
Single Garage

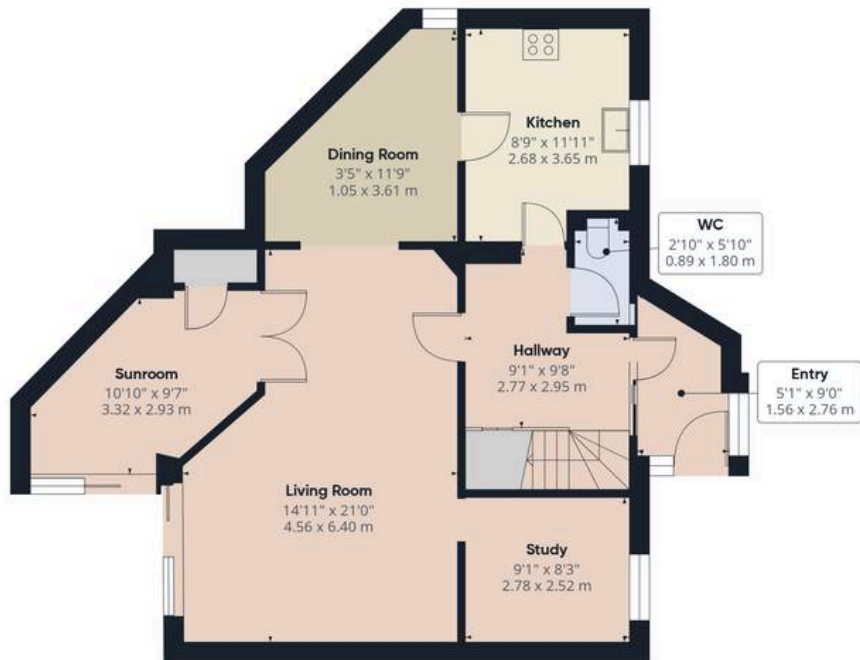
Providing space for one vehicle and with power supply and lighting.

ALLOCATED PARKING

1 Parking Space

Allocated parking for cars and vehicles including visitors parking.





Ground Floor Building 1



Floor 1 Building 1



Ground Floor Building 2



Approximate total area⁽¹⁾

1422 ft²

132 m²

(1) Excluding balconies and terraces

Calculations reference the RICS IPMS 3C standard. Measurements are approximate and not to scale. This floor plan is intended for illustration only.

GIRAFFE360



Arnold Greenwood Estate Agents

Arnold Greenwood Solicitors, 8-10 Highgate - LA9 4SX

01539733383

kendal@arnoldgreenwood.co.uk

www.arnoldgreenwoodestateagency.co.uk/



Whilst every care has been taken in the preparation of these sales particulars, they are for guidance purposes only and no guarantee can be given as to the working condition of the various services and appliances. Measurements have been taken as accurately as possible but slight discrepancies may inadvertently occur. The agents have not tested appliances or central heating services. Interested applicants are advised to make their own enquiries and investigation before finalising their offer purchase. Money Laundering In the event of prospective purchasers making an offer on a property, in relation to the Money Laundering Regulations photographic ID and Utility bill showing your address will be required. Please contact the office for their information.